

DESIGNERS GUILD

Rugs Collection



Autumn Winter 2019

Rug Techniques



Our digitally printed rugs are printed using state of the art chromojet technology. This produces high definition designs, with unlimited colours, suitable for detailed, realistic florals.

Hand knotted rugs require great skill and often take longer to produce than other methods. Each knot is individually hand tied onto the loom by a specialist weaver. This technique creates a luxurious, artisanal feel.

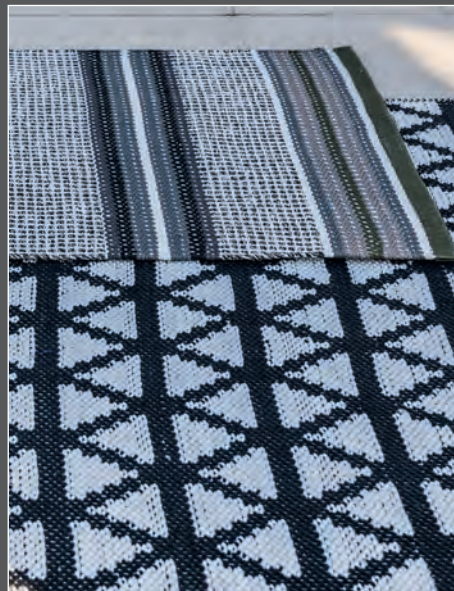


Our handwoven/handloom rugs are made on a shuttle loom. This is a loom which uses metal rods to achieve a linear, soft gradation in colour. This particular process suits ombré designs.

Hand tufted rugs are made using a manual handtufting gun, whereby the individual rug fibres are punched through a gauze ground. This method is most suited to our bold, geometric designs.

Our flat woven rugs are hand woven on a loom. These rugs have zero pile, which makes them durable and easy to clean. This technique is suitable for bold stripes, textural weaves and geometric patterns.

Screen printing is made up of a series of screens, each of which is covered by a layer of ink and printed one after the other. This method creates soft subtle marks of colour, and is suitable for our more textural designs.



A myriad of modern rugs in statement textures and shapes. Choose from contemporary patterns, elegant ombres, evocative florals and perfectly shaded plains.

Tricia Guild



Contents

Designers Guild Rug Collection	4
Designers Guild Runners	30
Designers Guild Indoor/Outdoor	34
Christian Lacroix Rug Collection	36
Caring For Your Rug	41
The Range At A Glance	44

AW19 Rugs Collection



Exquisite new florals



Detail of Dahlia Noir Slate



Dahlia Noir Slate - A rich and dramatic large round floral rug featuring exquisitely painted dahlias set against a dark charcoal textural backdrop. Digitally printed onto a hard-wearing dense short polyamide pile.

DE Ein üppiger runder Blumentepich mit exquisit gemalten Dahlien auf einem dunkel grauen Untergrund, digital auf einen strapazierfähigen Polyamid Flor gedruckt. **FR** Un grand tapis rond floral, riche et spectaculaire, composé de dahlias au ton neutre peints sur un fond texturé intense. Le motif est imprimé numériquement sur un poil court en polyamide. **ES** Una rica y dramática alfombra redonda de flores con dalias exquisitamente pintadas sobre un fondo texturado de carbón oscuro. Impresa digitalmente en densa y resistente pila corta de poliamida. **IT** Un grande tappeto rotondo, con dalie squisitamente dipinte in eleganti toni neutri su uno sfondo scuro color carbone. Stampato digitalmente su un denso tessuto di poliammido.



Detail of Montmartre Zinc



Dahlia Noir Slate



Digitally Printed. Pile 100% Polyamide, Backing 100% Felt.
250cm Diameter 8'2" RUGDG0602

Montmartre Zinc



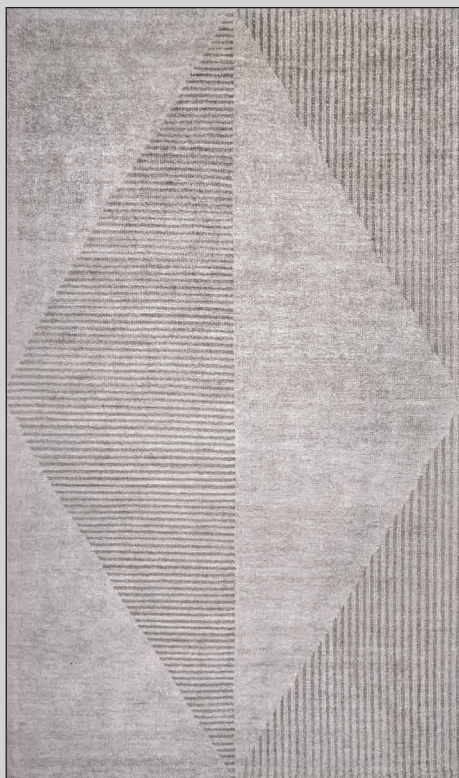
Loom Knotted. Pile 100% Tencel™ Lyocell, Backing 100% Cotton.
Standard 160 x 260cm 5'2 x 8'5" RUGDG0567
Large 200 x 300cm 6'6 x 9'8" RUGDG0568
Extra Large 250 x 350cm 8'2" x 11'5" RUGDG0569

Montmartre Zinc - Handwoven in Tencel™ Lyocell on a traditional broadloom. The gentle sheen combined with the subtle tones offers your interior beautiful simplicity and texture.

DE Handgewebt auf einem traditionellen Webstuhl in Tencel™ Lyocell. Durch den sanften Glanz und die raffinierten Farben passt dieser Teppich perfekt in jedes Interieur. **FR** Tissé à la main en Tencel™ Lyocell sur une grande maille traditionnelle. La brillance douce combinée aux tonalités subtiles offre une simplicité à votre intérieur. **ES** Tejida a mano en Tencel™ Lyocell en un telar tradicional. El ligero lustre combinado con los tonos sutiles aporta a su interior una hermosa simplicidad y textura. **IT** Intrecciato a mano in Tencel™ Lyocell con un telaio largo tradizionale. La delicata lucentezza unita ai toni morbidi offre semplicità e bellezza al tuo spazio interno.



Kappazuri Zinc



Hand Knotted. Pile 100% Viscose, Backing 100% Cotton.
 Standard 160 x 260cm 5'2 x 8'5" RUGDG0618
 Large 200 x 300cm 6'6 x 9'8" RUGDG0619
 Extra Large 250 x 350cm 8'2" x 11'5" RUGDG0620



Kappazuri zinc - A graphic statement rug in tones of stylish grey, hand knotted in luxurious viscose.

DE Ein handgetufteter Viskoseteppich in stilvollen Grautönen und grafischem Design. **FR** Tapis graphique en viscose noué main. **ES** Alfombra de impacto gráfico en tonos de elegante gris, anudada a mano en lujosa viscosa. **IT** Un tappeto dal design grafico in toni di grigio, annodato a mano in lussuosa viscosa.

Detail of Alphonse Moss



Alphonse Moss



Hand Knotted. Pile 100% Viscose, Backing 100% Cotton.
Standard 160 x 260cm 5'2" x 8'5" RUGDG0615
Large 200 x 300cm 6'6" x 9'8" RUGDG0616
Extra Large 250 x 350cm 8'2" x 11'5" RUGDG0617

Alphonse Moss - Beautifully hand knotted in luxurious pure viscose with a textured pile finish to enhance the softly graded colours.

DE Ein exquisiter, handgetufteter reiner Viskoseteppich mit einer texturierten Oberfläche und sanft abgestuften Farben. **FR** Un magnifique tapis géométrique en viscose noué main. Ce tapis élégant présente des formes graphiques contrastées. **ES** Bellamente anudada a mano en lujosa viscosa pura con un acabado de pila texturada para realzar los colores suavemente graduados. **IT** Splendidamente annodato a mano in lussuosa viscosa con finitura a trama per esaltare i colori delicati.

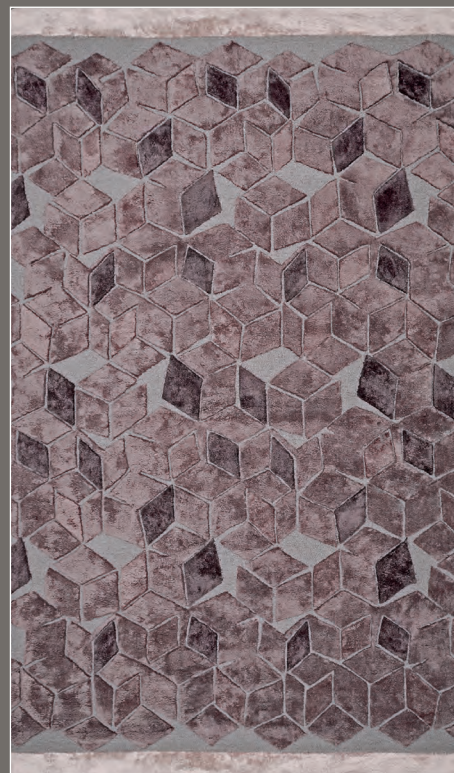


Detail of Fitzrovia Espresso



Sarang Chocolate

Fitzrovia Espresso



Hand Tufted. Pile 50% Wool, 50% Viscose,
Backing 100% Cotton.
Standard 160 x 260cm 5'2 x 8'5" RUGDG0603
Large 200 x 300cm 6'6 x 9'8" RUGDG0604
Extra Large 250 x 350cm 8'2" x 11'5" RUGDG0605
Runner 75 x 250cm 2'5 x 8'2" RUGDG0626

Hand Tufted. Pile 50% Wool, 50% Viscose,
Backing 100% Cotton.
Standard 160 x 260cm 5'2 x 8'5" RUGDG0612
Large 200 x 300cm 6'6 x 9'8" RUGDG0613
Extra Large 250 x 350cm 8'2" x 11'5" RUGDG0614
Runner 75 x 250cm 2'5 x 8'2" RUGDG0628

Detail of Sarang Chocolate

Sarang Chocolate - Directly inspired by our stunning velvet geometric check, this statement rug is hand tufted in fine alternating bands of wool and viscose in colour blocked ribs of colour with a subtle sheen. Also available in a runner option.

DE Dieser Statement Teppich wurde von unserem atemberaubenden Velour Karo inspiriert und aus feinen Wolle und Viskose Fasern handgetuftet. Auch als Läufer erhältlich. **FR** Directement inspiré de notre superbe velours au damier géométrique, ce tapis tufté à la main est composé de fines rayures alternant laine et viscose. Disponible également en tapis de couloir. **ES** Directamente inspirada en nuestro impresionante estampado geométrico de terciopelo, esta llamativa alfombra está rematada a mano en finas bandas alternas de lana y viscosa, en colores alternos y de un brillo sutil. También disponible en alfombra de pasillo. **IT** Questo tappeto prende ispirazione direttamente dal nostro splendido tessuto a scacchi, ed è taftato a mano in sottili fili di lana e viscosa alternati a costine di colore, con una sottile lucentezza. Disponibile anche in passatoia.

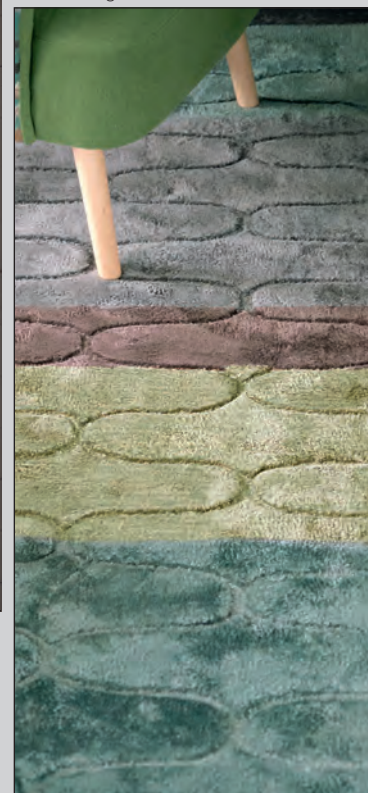


Fitzrovia Espresso - This elegant geometric rug is created with a hand tufted wool loop background and graphic raised cut pile motifs in viscose. Also available as a runner option.

DE Ein elegantes, geometrisches Teppichdesign aus handgetufteten Wollschlaufen und grafischen Schnittmotiven aus Viskose. Auch als Läufer erhältlich. **FR** Cet élégant tapis géométrique est créé avec un fond bouclé en laine tufté à la main. Ce tapis représente des motifs graphiques avec poils surélevés en viscose. Disponible également dans un format tapis de couloir. **ES** Esta elegante alfombra geométrica está creada con un fondo de bucle de lana tejido a mano y motivos gráficos de pila cortada en viscosa. También disponible en alfombra de pasillo. **IT** Questo elegante tappeto geometrico è stato creato con uno sfondo in lana taftata a mano e motivi grafici in viscosa. Disponibile anche in versione passatoia.



Detail of Ogee Ocean



Ogee Ocean

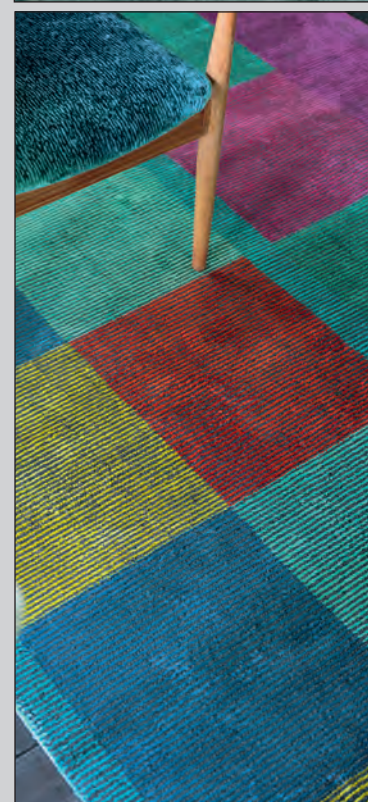


Hand Tufted. Pile 100% Tencel™ Lyocell, Backing 100% Cotton.
 Standard 160 x 260cm 5'2" x 8'5" RUGDG0609
 Large 200 x 300cm 6'6" x 9'8" RUGDG0610
 Extra Large 250 x 350cm 8'2" x 11'5" RUGDG0611
 Runner 75 x 250cm 2'5" x 8'2" RUGDG0627

Sarang Fuchsia



Hand Tufted. Pile 50% Wool, 50% Viscose, Backing 100% Cotton.
 Standard 160 x 260cm 5'2" x 8'5" RUGDG0606
 Large 200 x 300cm 6'6" x 9'8" RUGDG0607
 Extra Large 250 x 350cm 8'2" x 11'5" RUGDG0608
 Runner 75 x 250cm 2'5" x 8'2" RUGDG0625



Detail of Sarang Fuchsia

Ogee Ocean - Hand tufted from 100% luxurious viscose for a subtle sheen, this stylish rug is also available in a runner option.

DE Handgetuftet aus 100% luxuriöser Viskose für einen eleganten Glanz. Dieser stilvolle Teppich ist auch als Läufer erhältlich. **FR** Ce tapis de sol luxueux se compose de rayures de couleur vives, 100% viscose, il offre une brillance subtile. Egalement disponible en format tapis de couloir. **ES** Tejida a mano en lujosa viscosa 100% para un brillo sutil, esta elegante alfombra también está disponible en una opción para pasillo. **IT** Taftato a mano in lussuosa viscosa 100% per una sottile lucentezza, questo elegante tappeto è disponibile anche in versione passatoia.

Let the colour in and layer up the textures



Sarang Fuchsia - Directly inspired by our stunning velvet geometric check, this statement rug is hand tufted in fine alternating bands of wool and viscose in blocked ribs of colour with a subtle sheen. This designer rug features large scale checks in vivid tones of fuchsia pink, turquoise and lime which are balanced with bright stripes for a modern punch of colour for your floor. Also available in a runner option.

DE Dieser Statement Teppich wurde von unserem atemberaubenden Velour Karo inspiriert und aus feinen Wolle und Viskose Fasern handgetuftet. Auch als Läufer erhältlich. **FR** Directement inspiré de notre superbe velours au damier géométrique, ce tapis tufté à la main est composé de fines rayures alternant laine et viscose. Disponible également en tapis de couloir. **ES** Directamente inspirada en nuestro impresionante estampado geométrico de terciopelo, esta llamativa alfombra está rematada a mano en finas bandas alternas de lana y viscosa, en colores alternos y de un brillo sutil. También disponible en alfombra de pasillo. **IT** Questo tappeto prende ispirazione direttamente dal nostro splendido tessuto a scacchi, ed è taftato a mano in sottili fili di lana e viscosa alternati a costine di colore, con una sottile lucentezza. Disponibile anche in passatoia.

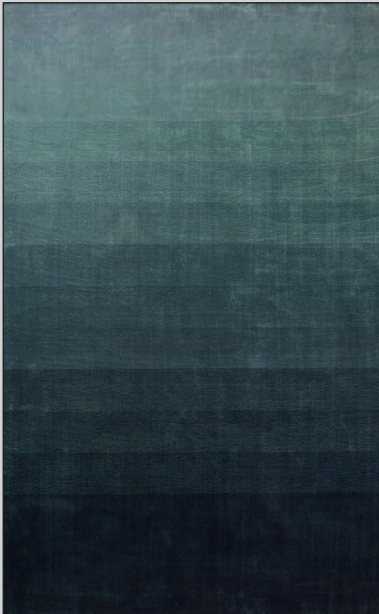
Eberson Aqua



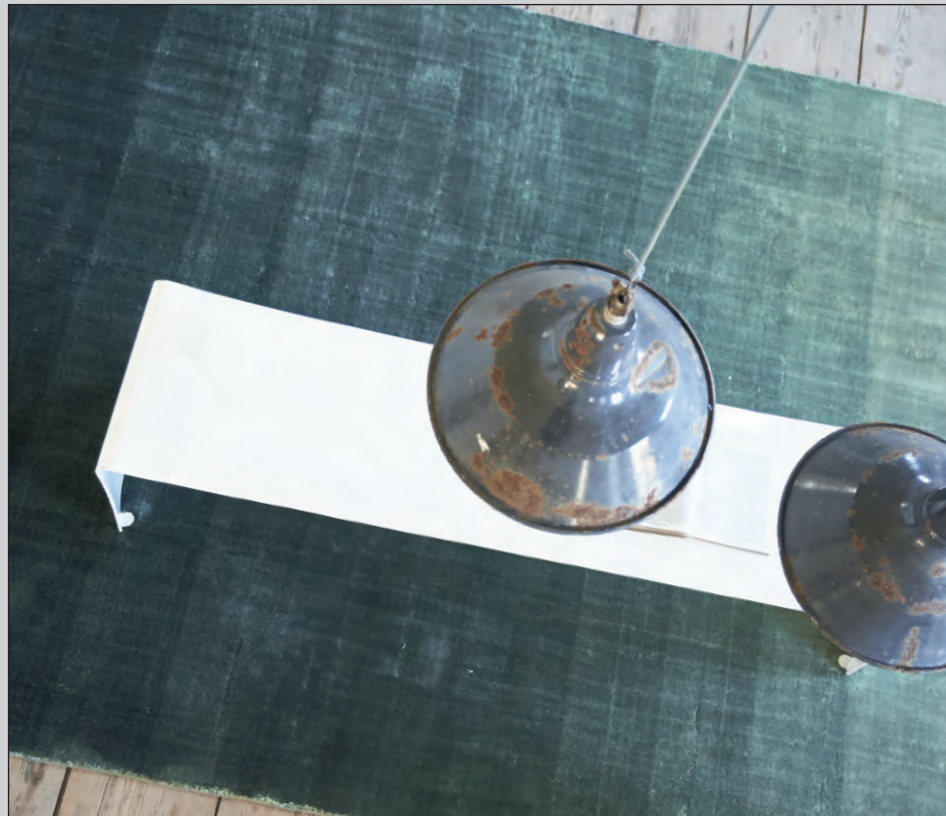
Hand Woven. Pile 100% Viscose, Backing 100% Cotton.
 Standard 160 x 260cm 5'2" x 8'5" DHRDG0009
 Large 200 x 300cm 6'6" x 9'8" DHRDG0010
 Extra Large 250 x 350cm 8'2" x 11'5" RUGDG0321



Capisoli Teal



Hand Woven. Pile 100% Polyester,
 Backing 100% Cotton.
 Standard 160 x 260cm 5'2" x 8'5" RUGDG0403
 Large 200 x 300cm 6'6" x 9'8" RUGDG0404
 Extra Large 250 x 350cm 8'2" x 11'5" RUGDG0405

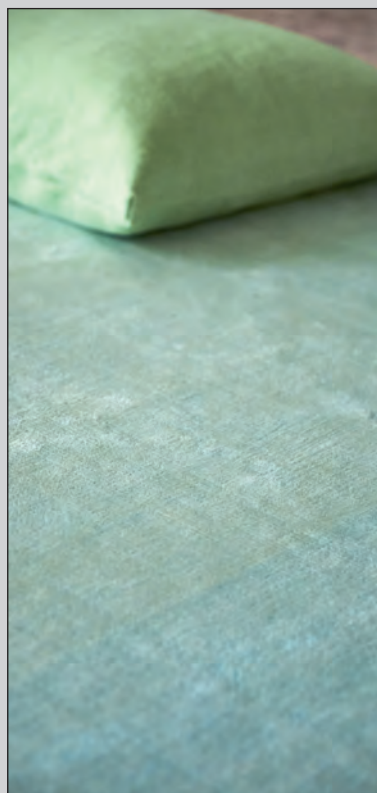


Eberson Aqua - A beautiful ombré rug fading through tones of aqua. Woven on a broadloom and dried in the sun giving an intense lustre to the yarns.

DE Ein wunderschöner ombré Teppich mit verblassenden Wassertönen. Auf einem besonders breiten Webstuhl hergestellt und in der Sonne getrocknet, um dem Garn einen besonderen Glanz zu verleihen. **FR** Un magnifique dégradé dans des tons bleus. Tissé en grande largeur, ce tapis a été séché au soleil ce qui lui confère un brillant exceptionnel. **ES** Una preciosa alfombra ombré con degradantes tonos azul agua. Tejida y luego secada al sol lo que le da un intenso brillo a esta alfombra. **IT** Un bellissimo tappeto dalle sfumature color acqua che, essendo tessuto su appositi telai ed asciugato sotto al sole, mostra un effetto particolarmente luminoso.

Capisoli Teal - This hard wearing rug is hand-woven in a resilient fibre making it suitable for higher traffic areas.

DE Dieser strapazierfähige Teppich ist handgewebt aus einem besonders widerstandsfähigen Garn und somit für besonders beanspruchte Bereiche geeignet. **FR** Tapis très résistant est tissé à la main dans une fibre élastique le rendant particulièrement adapté à un trafic intense. **ES** Esta resistente alfombra está tejida a mano en una fibra elástica por lo que es conveniente para las áreas que más se usan. **IT** Questo tappeto resistente è tessuto a mano in una fibra elastica che lo rende adatto per le aree di traffico più elevate.



Detail of Savoie Azure

Savoie Azure



Hand Loom. Pile 100% Tencel™ Lyocell,
Backing 100% Cotton.
Standard 160 x 260cm 5'2" x 8'5" RUGDG0501
Large 200 x 300cm 6'6" x 9'8" RUGDG0502
Extra Large 250 x 350cm 8'2" x 11'5" RUGDG0503

La Rotonda Pale Aqua



Screen Printed Hand Loom Pile 100% Viscose,
Backing 100% Cotton.
Standard 160 x 260cm 5'2" x 8'5" RUGDG0590
Large 200 x 300cm 6'6" x 9'8" RUGDG0591
Extra Large 250 x 350cm 8'2" x 11'5" RUGDG0592

Savoie Azure - Handwoven in Tencel™ Lyocell on a traditional broadloom, this rug depicts a gradation of bold azure blues and greens in a sumptuous and inviting manner.

DE Handgewebt in Tencel™ Lyocell auf einem traditionellen Webstuhl, präsentiert dieser Teppich eine mutige Variante in den Farben von Azurblau bis hin zu einem intensiven Grün. **FR** Tissé à la main par la marque Tencel™ Lyocell sur un métier à tisser traditionnel, ce tapis au dégradé bleu azur et vert est particulièrement doux. **ES** Esta alfombra, tejida a mano en Tencel™ Lyocell en un telar tradicional, presenta un atractivo colorido en una escala de azules y verdes. **IT** Tessuto a mano in Tencel™ Lyocell su un telaio tradizionale, questo tappeto descrive una gradazione di blu azzurro e verde in un modo sontuoso e invitante.

La Rotonda Pale Aqua - This unique and stylish rug is hand printed onto a 100% hand loom woven viscose base.

DE Dieser einzigartige und stilvolle Teppich ist handgedruckt und handgewebt auf einer 100% Viskosebasis. **FR** Ce tapis est imprimée à la main sur une base 100% viscose tissée à la main. **ES** Esta alfombra es estampado a mano sobre una base de viscosa 100%, también tejida a mano. **IT** Questo tappeto è stampato a mano su una base di viscosa tessuta a mano.



Saraille Linen

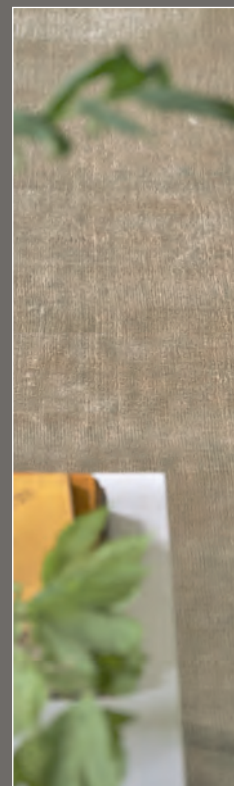


Hand Loom. Pile 100% Tencel™ Lyocell, Backing 100% Cotton.
 Standard 160 x 260cm 5'2 x 8'5" RUGDG0441
 Large 200 x 300cm 6'6 x 9'8" RUGDG0442
 Extra Large 250 x 350cm 8'2" x 11'5" RUGDG0443

Chareau Pebble



Hand Tufted. Pile 100% Viscose, Backing 100% Cotton.
 Standard 160 x 260cm 5'2 x 8'5" RUGDG0483
 Large 200 x 300cm 6'6 x 9'8" RUGDG0484
 Extra Large 250 x 350cm 8'2" x 11'5" RUGDG0485
 Runner 75 x 250cm 2'5 x 8'2" RUGDG0515



Detail of Saraille Linen



Detail of Chareau Pebble

Saraille Linen - Our beloved saraille ombré is reimagined in this stunning natural shaded rug. Exclusively woven in a Tencel™ Lyocell composition for additional durability and vibrance of colour.

DE Exklusiv aus einer neuen Tencelzusammensetzung[®] gewebt, die für Strapazierfähigkeit und Haltbarkeit der Farbe sorgt. **FR** Exclusivement tissé en Tencel™ Lyocell pour une résistance supplémentaire et des couleurs plus vives. **ES** Exclusivamente tejida en una nueva composición de Tencel™ Lyocell para una durabilidad adicional y un color vibrante. **IT** Esclusivamente tessuto in una nuova composizione Tencel™ Lyocell per una maggiore durevolezza e vivacità del colore.

Chareau Pebble - Inspired by our geometric wallpaper collection, this elegant Chareau pebble rug brings a 3-dimensional style pattern to your interior setting. Hand tufted in 100% looped viscose with a tip sheared finish, the neutral and grey tones create a bold graphic design.

DE Ein handgetufteter Schlingenteppich aus 100% Viskose in einem gewagten grafischen Design und neutralen und grauen Farbtönen. **FR** En viscose tissé main, ces tons neutres et gris créent un graphisme audacieux. **ES** Hecho a mano en viscosa 100% con un acabado punteado, los tonos neutros y grises le dan un toque gráfico al diseño. **IT** Fatto a mano in viscosa 100% ha dei toni neutri e grigi che creano un disegno audace.



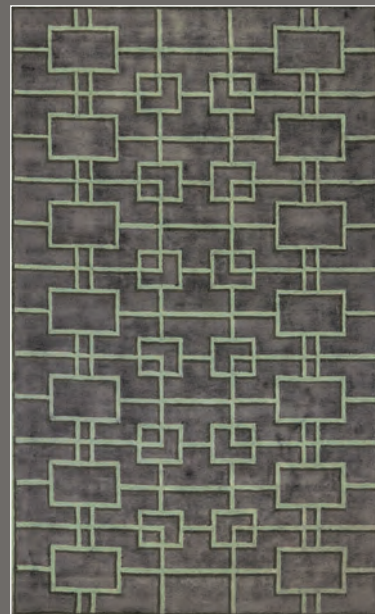
Caretti Linen



Hand Knotted. Pile 100% Bamboo Viscose, Backing 100% Cotton.
 Standard 160 x 260cm 5'2" x 8'5" RUGDG0095
 Large 200 x 300cm 6'6" x 9'8" RUGDG0096
 Extra Large 250 x 350cm 8'2" x 11'5" RUGDG0556



Rheinsberg Sage



Hand Tufted. Pile 100% Viscose, Backing 100% Cotton.
 Standard 160 x 260cm 5'2" x 8'5" RUGDG0531
 Large 200 x 300cm 6'6" x 9'8" RUGDG0532
 Extra Large 250 x 350cm 8'2" x 11'5" RUGDG0533
 Runner 75 x 250cm 2'5" x 8'2" RUGDG0557

Caretti Linen - A luxurious hand knotted bamboo viscose rug with a soft sheen and neutral variation from the wonderful natural fibres.

DE Ein luxuriöser handgeknüpfter Bambus-Teppich mit einem feinen Glanz in Variationen von wundervollen neutralen Fasern. **FR** Un luxueux tapis de bambou noué à la main légèrement lustré et dont la douce variation provient des magnifiques fibres naturelles utilisées. **ES** Una lujosa alfombra de bambú anudada a mano con el suave brillo y diferencias tonales de maravillosas fibras naturales. **IT** Un lussuoso tappeto bamboo con una morbida lucentezza e una variazione neutra delle meravigliose fibre naturali.

Rheinsberg Sage - Based on our striking Rheinsberg wallpaper, this eye-catching graphic trellis design with its meticulously hand tufted loop pile, brings a textural three-dimensional aspect to your interior setting.

DE Basierend auf unserer markanten Rheinsberg Tapete, bringt dieses auffällige Grafik-Spallier-Design mit seiner akribisch von Hand getupften Textur einen dreidimensionalen Aspekt in Ihr räumliches Setting. **FR** Inspiré de notre remarquable papier peint Rheinsberg, ce design graphique bouclé méticuleusement à la main apporte un aspect texturé en trois dimensions à votre intérieur. **ES** Inspirada en nuestro impactante papel pintado de Rheinsberg, este llamativo diseño enrejado con la pila doblada a mano, aporta una textura tridimensional a cualquier interior. **IT** Tratto dal nostro disegno di carte da parati Rheinsberg questo disegno grafico del traliccio è tuftato con il pelo arricciato, ha un aspetto tridimensionale per il tuo arredamento.

Barchessa Slate



Hand Tufted, Pile 100% Viscose, Backing 100% Cotton.
 Standard 160 x 260cm 5'2" x 8'5" RUGDG0570
 Large 200 x 300cm 6'6" x 9'8" RUGDG0571
 Extra Large 250 x 350cm 8'2" x 11'5" RUGDG0572

Padua Natural



Hand Tufted, 100% Wool, Backing 100% Cotton.
 Standard 160 x 260cm 5'2" x 8'5" RUGDG0597
 Large 200 x 300cm 6'6" x 9'8" RUGDG0598
 Extra Large 250 x 350cm 8'2" x 11'5" RUGDG0599
 Runner 75 x 250cm 2'5" x 8'2" RUGDG0601



Barchessa Slate - This modern rug is hand tufted in 100% looped viscose with a tip sheared finish. The neutral and grey square and rectangular forms create a bold graphic design.

DE Ein moderner Teppich, handgetuftet aus 100% Viskose. Die neutralen und grauen rechteckigen Muster erzeugen ein mutiges grafisches Design. **FR** Ce tapis de sol moderne est tufté à la main, 100% viscose bouclée avec une finition cisailée. Les formes neutres et grises carrées et rectangulaires créent un graphisme audacieux.

ES Esta moderna alfombra está confeccionada a mano en bucle de viscosa 100% con un acabado esquilado. El cuadro neutro y gris y las formas rectangulares crean un diseño atrevido y gráfico. **IT** Questo tappeto moderno in 100% viscosa è taftato a mano con una finitura tagliata in punta. Le forme quadrate e rettangolari neutre e grigie creano un design grafico audace.

Padua Natural - Skilfully hand tufted in a superior pure wool for improved softness. Wool is a naturally warm and resilient fibre, so this rug is also suitable for more high-traffic areas in your home.

DE Handgetuftet aus Wolle für eine besondere Weichheit. Wolle ist eine natürliche Faser die elastisch und warm ist sich somit für besonders stark frequentierte Bereiche in Ihrem Zuhause eignet. **FR** Tufté à la main en laine pure, il offre une douceur incroyable. La laine étant une fibre naturellement chaude et résistante, ce tapis convient pour les zones de votre maison à fort passage. **ES** Hábilmente tejida a mano en bucle en lana pura superior para mayor suavidad. La lana es una fibra naturalmente caliente y resistente, así que esta alfombra de lujo es también conveniente para las zonas de mayor tráfico en su hogar. **IT** Taftato a mano con pura lana pregiata per una maggiore morbidezza, gode anche della praticità della lana stessa, essendo questa una fibra naturalmente calda e resiliente, ed è adatto ad aree ad alto passaggio.



Detail of Barchessa Slate



Detail of Dorsoduro Fresco



Dorsoduro Fresco



Hand Knotted, Pile 100% Viscose,
Backing 100% Cotton.
Standard 160 x 260cm 5'2 x 8'5" RUGDG0564
Large 200 x 300cm 6'6 x 9'8" RUGDG0565
Extra Large 250 x 350cm 8'2" x 11'5" RUGDG0566

Neutral shades to layer up

Dorsoduro Fresco - Hand knotted in luxurious viscose, this rug brings together a contemporary and sophisticated colour palette in tuberose pink, moss and dusty mauve.

DE Dieser luxuriöser handgeknüpfte Viskose Teppich vereint eine moderne Farbpalette in Pink und Grüntönen. **FR** Noué à la main dans une viscose luxueuse, ce tapis de sol associe une palette de couleurs contemporaine et sophistiquée, rose, mousse et mauve. **ES** Anudada a mano en lujosa viscosa, esta alfombra combina una paleta de colores contemporánea y sofisticada, en rosa nardo, musgo y malva. **IT** Annodato a mano in lussuosa viscosa, questo tappeto da pavimento riunisce una tavolozza di colori contemporanea e sofisticata in rosa tuberosa, muschio e malva.

Eberson Slate



Hand Woven. Pile 100% Viscose, Backing 100% Cotton.
 Standard 160 x 260cm 5'2" x 8'5" DHRDG0011
 Large 200 x 300cm 6'6" x 9'8" DHRDG0012
 Extra Large 250 x 350cm 8'2" x 11'5" RUGDG0322

Caretti Pebble



Hand Knotted. Pile 100% Bamboo Viscose,
 Backing 100% Cotton.
 Standard 160 x 260cm 5'2" x 8'5" RUGDG0318
 Large 200 x 300cm 6'6" x 9'8" RUGDG0319
 Extra Large 250 x 350cm 8'2" x 11'5" RUGDG0320



Eberson Slate - Woven on a broadloom and dried in the sun giving an intense lustre to the yarns.

DE Auf einem besonders breiten Webstuhl hergestellt und in der Sonne getrocknet, um dem Garn einen besonderen Glanz zu verleihen. **FR** Tissé en grande largeur, ce tapis a été séché au soleil ce qui lui confère une brillance exceptionnelle. **ES** Tejida y luego secada al sol lo que le da un intenso brillo a esta alfombra. **IT** Tessuto su appositi telai ed asciugato sotto al sole, mostra un effetto particolarmente luminoso.

Caretti Pebble - A luxurious hand knotted bamboo viscose rug with a soft sleek sheen, and neutral variation from the wonderful natural fibres.

DE Ein luxuriöser, handgeknüpfter Bambusteppich, mit dem weichen, eleganten Glanz von Naturfasern. **FR** Un luxueux tapis de bambou noué main, légèrement brillant par la variation de merveilleuses fibres naturelles. **ES** Una lujosa alfombra de bambú anudada a mano con un brillo suave y elegante, y la variación creada por las maravillosas fibras naturales. **IT** Un lussuoso tappeto bamboo annodato a mano con un elegante velo e una variazione dalle meravigliose fibre naturali.



Detail of Eberson Slate



Detail of Peonia Grande Zinc

Peonia Grande Zinc



Digitally Printed. Pile 100% Polyamide, Backing 100% Felt.
250cm Diameter 8'2" RUGDG0593

Peonia Grande Zinc - Digitally printed onto a dense short polyamide pile, this quality rug displays intense detail and colour.

DE Dieses einzigartige Design wurde digital auf einen hochwertigen Polyamid Grund gedruckt. **FR** Imprimé numériquement sur un poil court de polyamide dense, ce tapis de qualité affiche des détails uniques et des couleurs intenses. **ES** Estampada digitalmente sobre una densa pile de poliamida, esta alfombra de calidad presenta un intenso colorido y detalle. **IT** Stampato digitalmente su un denso spessore di poliammide, questo tappeto di qualità mostra dettagli e colori intensi.

Capisoli Granite



Hand Woven. Pile 100% Polyester, Backing 100% Cotton.
 Standard 160 x 260cm 5'2" x 8'5" RUGDG0549
 Large 200 x 300cm 6'6" x 9'8" RUGDG0550
 Extra Large 250 x 350cm 8'2" x 11'5" RUGDG0551



Roxburgh Linen



Hand Tufted. Pile 100% Viscose, Backing 100% Cotton.
 Standard 160 x 260cm 5'2" x 8'5" RUGDG0417
 Large 200 x 300cm 6'6" x 9'8" RUGDG0418
 Extra Large 250 x 350cm 8'2" x 11'5" RUGDG0419



Capisoli Granite - Derived from the subtle ombré of our Designers Guild Capisoli weave, this hard wearing rug is hand-woven in a resilient fibre making it suitable for higher traffic areas.

DE Inspiriert von unserem leicht changierenden Capisoli Design, empfiehlt sich dieser widerstandsfähige, handgewebte Teppich aus resistenten Fasern für stark frequentierte Bereiche. **FR** Dérivé notre collection de tissu tissés Capisoli, ce tapis est particulièrement résistant est tissé à la main dans une fibre résistante, ce qui le rend idéal pour les zones à fort passage. **ES** Inspirada en el sutil ombré de nuestra tela Capisoli, esta resistente alfombra está tejida a mano en una fibra resistente que la hace adecuada para áreas de mayor tráfico. **IT** Derivato dalle ombre sottili del nostro disegno Capisoli, questo tappeto resistente è tessuto a mano in una fibra resistente.

Roxburgh Linen - Add a smart accent of tailored luxury to your interior space with this modern geometric rug.

DE Verleihen Sie Ihrer Einrichtung einen schicken, luxuriösen Akzent, mit diesem geometrischen Teppich. **FR** Ajoutez du luxe à votre intérieur avec ce tapis moderne et géométrique. **ES** Añade un punto elegante y lujoso a sus interiores con esta moderna alfombra geométrica. **IT** Aggiungete un tocco elegante e di lusso su misura al vostro spazio interno con questo tappeto geometrico moderno.



Detail of Roxburgh Linen



Detail of Capisoli Granite

Katiya Platinum



Screen Printed Hand Loom. Pile 100% Viscose, Backing 100% Cotton.
 Standard 160 x 260cm 5'2" x 8'5" RUGDG0534
 Large 200 x 300cm 6'6" x 9'8" RUGDG0535
 Extra Large 250 x 350cm 8'2" x 11'5" RUGDG0536

Katiya Platinum - This elegant rug which is printed on 100% viscose is a decorative addition to your interior setting.

DE Auf 100% Viskose gedruckt, ist dieser Teppich eine dekorative Ergänzung zu ihrer Inneneinrichtung **FR** Cet élégant tapis imprimé sur du 100% viscose sera la pièce maîtresse de votre intérieur. **ES** Esta elegante alfombra está impresa en 100% viscosa y es perfecta para cualquier interior. **IT** Questo elegante tappeto 100% viscosa è un'aggiunta decorativa al tuo ambiente.

Tanchoi Graphite



Hand Tufted. Pile 50% Tencel™ Lyocell, 50% Viscose, Backing 100% Cotton.
 Standard 160 x 260cm 5'2 x 8'5" RUGDG0525
 Large 200 x 300cm 6'6 x 9'8" RUGDG0526
 Extra Large 250 x 350cm 8'2" x 11'5" RUGDG0527
 Runner 75 x 250cm 2'5 x 8'2" RUGDG0560



Chandigarh Berry



Hand Knotted. Pile 100% Viscose, Backing 100% Cotton.
 Standard 160 x 260cm 5'2 x 8'5" RUGDG0516
 Large 200 x 300cm 6'6 x 9'8" RUGDG0517
 Extra Large 250 x 350cm 8'2" x 11'5" RUGDG0518



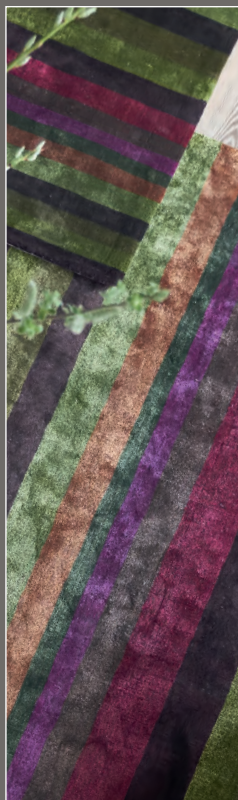
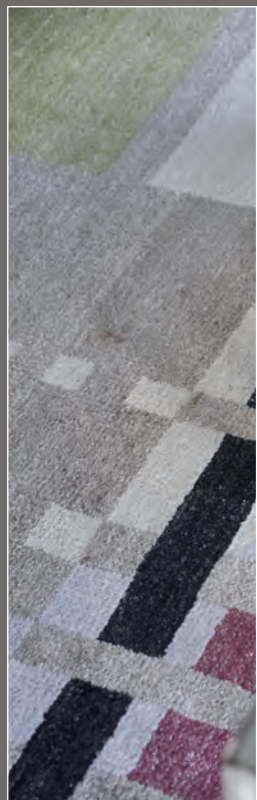
Tanchoi Graphite - Hand tufted in a 50% Tencel™ Lyocell 50% viscose blend for exceptional colour and softness, this contemporary rug is a statement piece with a luxurious finish.

DE Handgetuftet aus 50% Tencel™ Lyocell und 50% Viskose für außergewöhnliche Farbe und Weichheit, ist dieser zeitgenössische Läufer ein Statement Stück mit einem luxuriösen Finish. **FR** Tufté main dans un mélange 50% viscose 50% Tencel™ Lyocell pour une couleur et une douceur exceptionnelles. **ES** Hecho a mano en una mezcla al 50% de Tencel™ Lyocell y viscosa que le da un color y una suavidad excepcionales, esta alfombra es una pieza con un acabado de lujo. **IT** Tuftato a mano, 50% viscosa e 50% in Tencel™ Lyocell, per un colore e una morbidezza eccezionale, questo tappeto moderno è un capo di tendenza con una finiture di lusso.

Chandigarh Berry - Hand knotted in luxurious viscose, this rug brings together a contemporary and sophisticated colour palette in berry, moss and aubergine.

DE Handverknötet in luxuriöser Viskose, vereint dieser Teppich eine zeitgenössische und anspruchsvolle Farbpalette in Berry, Moos und Aubergine. **FR** Noué à la main en viscose, ce tapis de sol associe une palette de couleurs contemporaines et sophistiquées dans les tons baies, mousses et aubergines. **ES** Tejida a mano en viscosa, esta alfombra combina una paleta de colores contemporánea y sofisticada en tonos rosa, musgo y berenjena. **IT** Annodato a mano in lussuosa viscosa, questo tappeto unisce una tavolozza di colori contemporanea e sofisticata con toni di bacche, muschio e melanzana.

Contemporary stripes and lustrous sheen



Detail of Chandigarh Berry

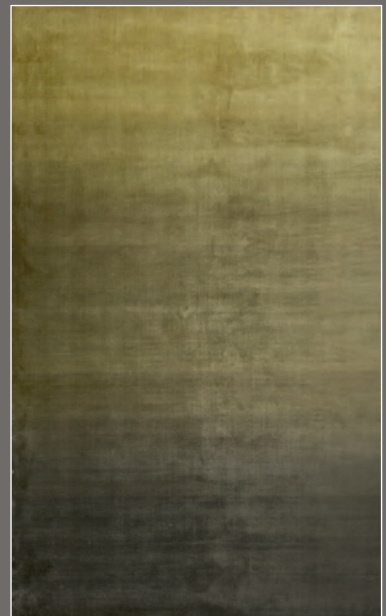
Detail of Tanchoi Berry

Tanchoi Berry



Hand Tufted. Pile 50% Tencel™ Lyocell, 50% Viscose, Backing 100% Cotton.
 Standard 160 x 260cm 5'2" x 8'5" RUGDG0522
 Large 200 x 300cm 6'6" x 9'8" RUGDG0523
 Extra Large 250 x 350cm 8'2" x 11'5" RUGDG0524
 Runner 75 x 250cm 2'5" x 8'2" RUGDG0559

Eberson Moss



Hand Woven. Pile 100% Viscose, Backing 100% Cotton.
 Standard 160 x 260cm 5'2" x 8'5" RUGDG0546
 Large 200 x 300cm 6'6" x 9'8" RUGDG0547
 Extra Large 250 x 350cm 8'2" x 11'5" RUGDG0548

Tanchoi Berry - Hand tufted in a 50% Tencel™ Lyocell 50% viscose blend for exceptional colour and softness, this contemporary rug is a statement piece with a luxurious finish.

DE Hand getuftet in einer 50% Tencel™ Lyocell 50% Viskose Mischung für außergewöhnliche Farben und Weichheit, ist diese zeitgenössische Teppich ein Statement Stück mit einem luxuriösen Finish. **FR** Tufté main dans un mélange 50% viscose 50% Tencel™ Lyocell pour une douceur exceptionnelle. **ES** Hecho a mano en una mezcla al 50% de Tencel™ Lyocell y viscosa que le da un color y una suavidad excepcional, esta alfombra es una pieza con un acabado de lujo. **IT** Tuftato a mano, 50% viscosa e 50% in Tencel™ Lyocell, per un colore e una morbidezza eccezionale, questo tappeto moderno è un capo di tendenza con una finiture di lusso.

Eberson Moss - A modern, beautiful ombré rug fading through warm earthy tones and moss. Woven in fine viscose on a broadloom and dried in the sun.

DE Ein wunderschöner, moderner Teppich mit Schattierungen von warmen Erdtönen und Moos. Nahtlos in feinsten Viskose gewoben und in der Sonne getrocknet. **FR** Un tapis magnifiquement dégradé dans des tons chauds moss et terre. Réalisé avec une fine viscose sur un grand métier à tisser, ce tapis a séché au soleil. **ES** Una moderna alfombra en cálidos tonos que van de tierra a musgo. Tejida en fina viscose sobre un paño grueso y suave secado al sol. **IT** Moderno e bellissimo tappeto sfumato con calde tonalità di terra e muschio. Tessuto in viscose a telaio.



Delft Flower Noir



Digitally Printed. Pile 100% Polyamide, Backing 100% Felt.
250cm Diameter 8'2" RUGDG0457



Detail of Delft Flower Noir



Detail of Rheinsberg Granite

Delft Flower Noir - Digitally printed onto a dense short pile, this rug displays intense detail and colour.

DE Digital auf ein dichtes Garn gedruckt, dank dessen die Farben und Details dieses Teppichs wundervoll zur Geltung kommen. **FR** Imprimés en numérique sur un poil court et dense, les détails et les couleurs donnent de la force à ce tapis. **ES** Impresa digitalmente sobre una pila corta y densa, esta alfombra muestra un detalle y color intensos. **IT** Stampato digitalmente su un pile corto, questo tappeto mostra dettagli e colore intensi.

Eberson Platinum - A beautiful ombré rug fading through tones of platinum and greys. Woven in fine viscose on a broadloom and dried in the sun giving an intense and unique lustre to the yarns.

DE In feiner Viskose auf einem breiten Webstuhl gewebt und in der Sonne getrocknet, was für einen intensiven und einzigartigen Glanz des Garns sorgt. **FR** Réalisé avec une fine viscose sur un grand métier à tisser, ce tapis a séché au soleil ce qui lui confère une brillance et une intensité exceptionnelle. **ES** Tejido en fina viscosa y secada al sol lo que le da un brillo intenso y único. **IT** Uno tappeto ombré composto in pura viscosa e lavorato a telaio largo. L'asciugatura al sole dona una lucentezza intensa al filato.



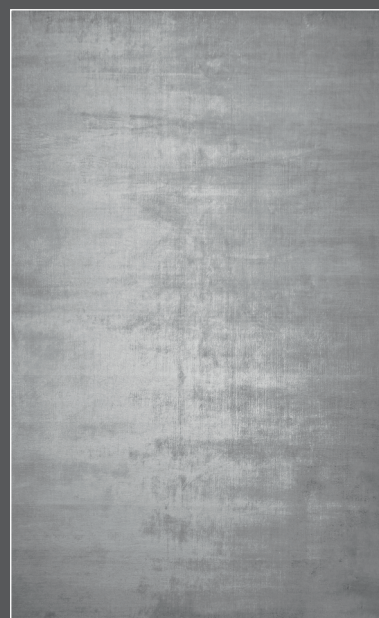
Rheinsberg Granite



Hand Tufted. Pile 100% Viscose, Backing 100% Cotton.
 Standard 160 x 260cm 5'2" x 8'5" RUGDG0528
 Large 200 x 300cm 6'6" x 9'8" RUGDG0529
 Extra Large 250 x 350cm 8'2" x 11'5" RUGDG0530
 Runner 75 x 250cm 2'5" x 8'2" RUGDG0558



Eberson Platinum



Hand Woven. Pile 100% Viscose, Backing 100% Cotton.
 Standard 160 x 260cm 5'2" x 8'5" RUGDG0344
 Large 200 x 300cm 6'6" x 9'8" RUGDG0345
 Extra Large 250 x 350cm 8'2" x 11'5" RUGDG0346

Rheinsberg Granite - Based on our striking Rheinsberg wallpaper, this eye-catching graphic trellis design with its meticulously hand tufted loop pile, brings a textural three-dimensional aspect to your interior setting.

DE Basierend auf unserer markanten Rheinsberg Tapete, bringt dieses auffällige Grafik-Spazier-Design mit seiner akribisch Hand getufteten Textur, einen strukturellen dreidimensionalen Aspekt in Ihre Inneneinrichtung. **FR** Inspiré de notre remarquable papier peint Rheinsberg, ce design graphique bouclé méticuleusement à la main apporte un aspect texturé en trois dimensions à votre intérieur. **ES** Inspirada en nuestro impactante papel pintado de Rheinsberg, este llamativo diseño enrejado con la pila doblada a mano, aporta una textura tridimensional a cualquier interior. **IT** Tratto dal nostro disegno di carte da Parati Rheinsberg questo disegno grafico del traliccio è tuftato con il pelo arricciato, ha un aspetto tridimensionale per il tuo arredamento.

Eberson Cobalt



Hand Woven. Pile 100% Viscose, Backing 100% Cotton.
 Standard 160 x 260cm 5'2" x 8'5" DHR182/02
 Large 200 x 300cm 6'6" x 9'8" DHR183/02
 Extra Large 250 x 350cm 8'2" x 11'5" RUGDG0323



Chandigarh Aqua



Hand Knotted. Pile 100% Viscose,
 Backing 100% Cotton.
 Standard 160 x 260cm 5'2" x 8'5" RUGDG0519
 Large 200 x 300cm 6'6" x 9'8" RUGDG0520
 Extra Large 250 x 350cm 8'2" x 11'5" RUGDG0521



Shimmering textures and dynamic geometrics

Eberson Cobalt - A beautiful ombré rug fading through tones of cobalt. Woven on a broadloom and dried in the sun giving an intense lustre to the yarns.

DE Ein wunderschöner Teppich, mit einem Farbverlauf in Kobalttönen. Nahtlos auf breiten Webstühlen gewebt und in der Sonne getrocknet, erhält das Garn einen intensiven Luster. **FR** Un magnifique tapis avec un dégradé de bleu. Ses fils ont un éclat intense grâce au tissage en largeur et au séchage au soleil. **ES** Una preciosa alfombra ombré de colores cobalto en degradé. Tejida y secada al sol lo que le da un intenso brillo. **IT** Un bellissimo tappeto con le sfumature del cobalto. Realizzato a telaio ed asciugato al sole, presenta fili dalla lucentezza intensa.

Chandigarh Aqua - A striking statement rug for your interior depicting a bold, large scale geometric pattern with intersecting shapes. Hand knotted in luxurious viscose, this brings together a contemporary and sophisticated colour palette in aqua, moss and teal.

DE Hand verknötet in luxuriöser Viskose, vereint dieser Teppich eine zeitgenössische und anspruchsvolle Farbpalette in Aqua, Moss und Teal. **FR** Noué à la main en viscose luxueuse, ce tapis de sol réunit une palette de couleur contemporaines et sophistiquées de aqua, mousse et sarcelle. **ES** Tejida a mano en viscosa, esta alfombra combina una paleta de colores contemporánea y sofisticada en tonos agua, musgo y verde azulado. **IT** Annodato a mano in lussuosa viscosa, questo tappeto unisce una tavolozza di colori contemporanea e sofisticata con toni di acqua, muschio e melanzana.



Detail of Chandigarh Aqua

Chareau Ocean



Hand Tufted. Pile 100% Viscose,
Backing 100% Cotton.
Standard 160 x 260cm 5'2" x 8'5" RUGDG0480
Large 200 x 300cm 6'6" x 9'8" RUGDG0481
Extra Large 250 x 350cm 8'2" x 11'5" RUGDG0482
Runner 75 x 250cm 2'5" x 8'2" RUGDG0514

Saraille Dusk



Hand Loom. Pile 100% Tencel™ Lyocell,
Backing 100% Cotton.
Standard 160 x 260cm 5'2" x 8'5" RUGDG0444
Large 200 x 300cm 6'6" x 9'8" RUGDG0445
Extra Large 250 x 350cm 8'2" x 11'5" RUGDG0446

Chareau Ocean - Hand tufted in 100% looped viscose with a tip sheared finish, the teal and grey tones create a bold graphic design.

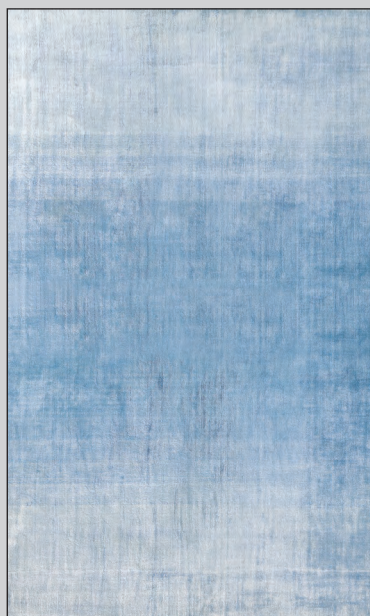
DE Ein handgetufteter Schlingenteppich aus 100% Viskose in einem einzigartigen in Blaugrün und Grau gehaltenen grafischem Design. **FR** En viscose tissé main, ces tons sardelle et gris créent un graphisme audacieux. **ES** Hecho a mano en viscosa 100% con un acabado punteado, los tonos verde azulados y grises le dan un toque gráfico al diseño. **IT** Fatto a mano in viscosa ha dei toni verdi e grigi che creano un design grafico.

Saraille Dusk - Exclusively woven in a Tencel™ Lyocell composition for additional durability and vibrance of colour.

DE Exklusiv aus Tencel™ Lyocell gewebt, das für eine besondere Strapazierfähigkeit und Farbtiefe sorgt. **FR** Exclusivement tissé en Tencel™ Lyocell pour une résistance supplémentaire et des couleurs plus vives. **ES** Exclusivamente tejida en una nueva composición de Tencel™ Lyocell para una durabilidad adicional y un color vibrante. **IT** Esclusivamente tessuto in una nuova composizione Tencel™ Lyocell per una maggiore durevolezza e vivacità del colore.



Phipps Sky

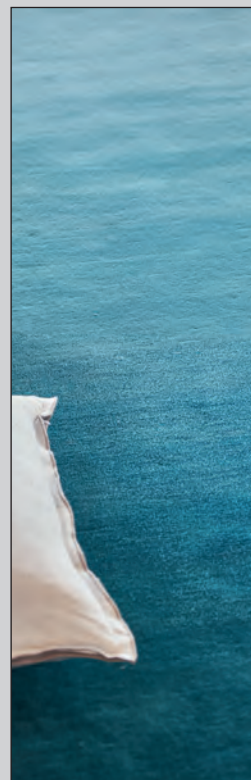


Hand Woven. Pile 100% Viscose, Backing 100% Cotton.
 Standard 160 x 260cm 5'2" x 8'5" DHRDG0056
 Large 200 x 300cm 6'6" x 9'8" DHRDG0057

Padua Azure



Hand Tufted. Pile 100% Wool, Backing 100% Cotton.
 Standard 160 x 260cm 5'2" x 8'5" RUGDG0594
 Large 200 x 300cm 6'6" x 9'8" RUGDG0595
 Extra Large 250 x 350cm 8'2" x 11'5" RUGDG0596
 Runner 75 x 250cm 2'5" x 8'2" RUGDG0600



Detail of Padua Azure



Detail of Impasto Celadon

Phipps Sky - Sumptuous and inviting, silky and iridescent, our hand woven shaded rug gradates through a gentle ombré from palest sky through to a richer azure.

DE Luxuriös und einladend, seidig und schillernd mit sanftem Farbverlauf von einem blassen Sky in ein kräftiges Azure übergehend. **FR** Somptueux et engageant, soyeux et irisé, Phipps fait main propose un dégradé de couleurs. **ES** Suntuosa y tentadora, sedosa e iridescente, nuestra alfombra Phipps tejida a mano, con un degradado de colores. **IT** Suntuoso ed invitante, setoso ed iridescente, il nostro tappeto tessuto a mano passa attraverso un delicato sfumato di colori.

Padua Azure - Skilfully hand tufted in a superior pure wool for improved softness. Wool is a naturally warm and resilient fibre, so this luxury rug is also suitable for more high-traffic areas in your home.

DE Handgetuftet aus Wolle für eine besondere Weichheit. Wolle ist eine natürliche Faser die elastisch und warm ist und sich somit für besonders stark frequentierte Bereiche in Ihrem Zuhause eignet. **FR** Tufté à la main en laine pure, il offre une douceur incroyable. La laine étant une fibre naturellement chaude et résistante, ce tapis convient pour les zones de votre maison à fort passage. **ES** Hábilmente tejida a mano en bucle en lana pura superior para mayor suavidad. La lana es una fibra naturalmente caliente y resistente, así que esta alfombra de lujo es también conveniente para las zonas de mayor tráfico en su hogar. **IT** Taftato a mano con pura lana pregiata per una maggiore morbidezza, gode anche della praticità della lana, essendo questa una fibra naturalmente calda e resiliente, ed è adatto ad aree ad alto passaggio.



Impasto Celadon



Screen Printed Hand Loom Pile 100% Viscose,
Backing 100% Cotton.
Standard 160 x 260cm 5'2 x 8'5" RUGDG0495
Large 200 x 300cm 6'6 x 9'8" RUGDG0496
Extra Large 250 x 350cm 8'2" x 11'5" RUGDG0497

Dorsoduro Celadon



Hand knotted. Pile 100% Viscose,
Backing 100% Cotton.
Standard 160 x 260cm 5'2 x 8'5" RUGDG0561
Large 200 x 300cm 6'6 x 9'8" RUGDG0562
Extra Large 250 x 350cm 8'2" x 11'5" RUGDG0563

Impasto Celadon - Printed on 100% hand loom woven viscose; blues, greys and dashes of charcoal make a spontaneous, artistic colour combination.

DE Gedruckt auf 100% handgewebter Viskose, sorgen Blau, Grau und dezente Charcoal Elemente für eine kreative Farbkombination. **FR** Imprimé sur une matière 100% viscose et tissée à la main. Une combinaison originale et artistique aux tons bleu, gris et charbon. **ES** Impreso en 100% viscosa tejida a mano; su tonos azules y grises crean una combinación de colores espontánea y artística. **IT** Stampato su tessuto a maglia 100%, tessuto viscoso; blu, grigi e strisce di carbone fanno una combinazione di colori spontanea e artistica.

Dorsoduro Celadon - Hand knotted in luxurious viscose, this rug brings together a contemporary and sophisticated colour palette in charcoal, teal and lime.

DE Dieser handgeknüpfte Viskose Teppich vereint eine moderne Farbpalette in Grau und Grüntönen. **FR** Noué à la main dans une viscose luxueuse, ce tapis de sol associe une palette de couleurs contemporaine et sophistiquée, charbon, sarcelle et citron vert. **ES** Anudada a mano en lujosa viscosa, esta alfombra combina una paleta de colores contemporánea y sofisticada, en marengo, verde azulado y lima. **IT** Annodato a mano in lussuosa viscosa, questo tappeto da pavimento riunisce una tavolozza di colori contemporanea e sofisticata in grigio antracite, verde petrolio e lime.

Chareau Ocean



Hand Tufted. Pile 100% Viscose, Backing 100% Cotton. 75 x 250cm 2'5 x 8'2" RUGDG0514

Sarang Fuchsia



Hand Tufted. Pile 50% Wool, 50% Viscose, Backing 100% Cotton. 75 x 250cm 2'5 x 8'2" RUGDG0625

Padua Azure



Hand Tufted. Pile 100% Wool, Backing 100% Cotton. 75 x 250cm 2'5 x 8'2" RUGDG0600



Chareau Ocean - Hand tufted in 100% looped viscose with a tip sheared finish.

DE Ein handgetufteter Schlingenteppich aus 100% reiner Viskose mit einer kippgescherten Oberfläche **FR** Touffetés à la main en viscose 100% bouclée avec une finition ciselée. **ES** Tejida a mano en viscosa 100% con un acabado punteado. **IT** Trapuntato a mano in viscosa loop 100% con finitura a punta.

Sarang Fuchsia - This statement runner is hand tufted in fine alternating bands of wool and viscose in blocked ribs of colour with a subtle sheen.

DE Dieser leicht glänzende Statement Teppich wurde von unserem atemberaubenden Velour Karo inspiriert und aus feinen Wolle und Viskose Fasern handgetuftet **FR** Ce tapis tufté à la main est composé de fines rayures alternant laine et viscose. **ES** Esta llamativa alfombra está rematada a mano en finas bandas alternas de lana y viscosa, en colores alternos y de un brillo sutil. **IT** Questo tappeto è taftato a mano in sottili fili di lana e viscosa alternati a costine di colore, con una sottile lucentezza.

Padua Azure - Skilfully hand tufted in a superior pure wool for improved softness, and with the added practicality of wool being a naturally warm and resilient fibre, this quality runner is suitable for high-traffic areas in your home.

DE Handgetuftet aus reiner Wolle für einen besonders weichen Griff. Dieser Läufer eignet sich durch die sehr zweckmäßigen Eigenschaften der Wolle auch für stark frequentierte Bereiche in Ihrem Zuhause. **FR** Tuftée à la main avec habileté dans une laine pure de qualité supérieure. Douce et pratique, la laine est une fibre naturellement chaude et résistante, convenant aux zones de fort passage dans la maison. **ES** Tejida a mano en lana pura de calidad superior para mayor suavidad - con una fibra naturalmente cálida y resistente esta alfombra de pasillo de gran calidad es perfectamente adecuada para zonas de alto tráfico en el hogar. **IT** Taftato a mano con pura lana pregiata per una maggiore morbidezza, gode anche della praticità della lana, essendo questa una fibra naturalmente calda e resiliente, ed è adatto ad aree ad alto passaggio.

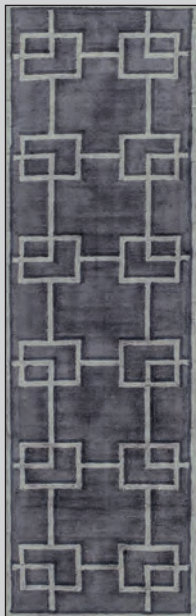
Runners - The ultimate shape for hallways, landings and bedrooms



Detail of Rheinsberg Sage

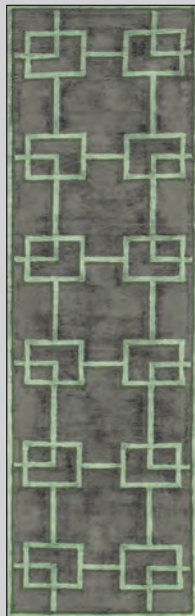


Rheinsberg Granite



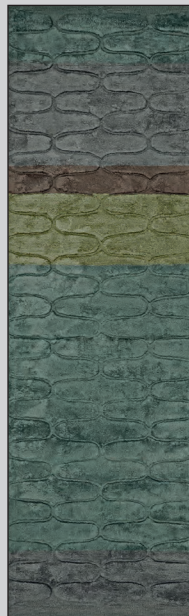
Hand Tufted. Pile 100% Viscose, Backing 100% Cotton. 75 x 250cm 2'5 x 8'2" RUGDG0558

Rheinsberg Sage



Hand Tufted. Pile 100% Viscose, Backing 100% Cotton. 75 x 250cm 2'5 x 8'2" RUGDG0557

Ogee Ocean



Hand Tufted. Pile 100% Viscose, Backing 100% Cotton. 75 x 250cm 2'5 x 8'2" RUGDG0627

Rheinsberg Granite - This eye-catching graphic trellis design with its meticulously hand tufted loop pile, brings a textural three-dimensional aspect to your interior setting.

DE Dieses auffällige Grafik-Spalier-Design mit seiner akribisch Hand getufteten Textur bringt einen strukturellen dreidimensionalen Aspekt in Ihre Inneneinrichtung. **FR** Ce design graphique bouclé méticuleusement à la main apporte un aspect texturé en trois dimensions à votre intérieur. **ES** Este llamativo diseño enrejado con la pila doblada a mano, aporta una textura tridimensional a cualquier interior. **IT** Questo disegno grafico del traliccio è tuftato con il pelo arricciato, ha un aspetto tridimensionale per il tuo arredamento.

Rheinsberg Sage - This eye-catching graphic trellis design with its meticulously hand tufted loop pile, brings a textural three-dimensional aspect to your interior setting.

DE Dieses auffällige Grafik-Spalier-Design mit seiner akribisch Hand getufteten Textur bringt einen strukturellen dreidimensionalen Aspekt in Ihre Inneneinrichtung. **FR** Ce design graphique bouclé méticuleusement à la main apporte un aspect texturé en trois dimensions à votre intérieur. **ES** Este llamativo diseño enrejado con la pila doblada a mano, aporta una textura tridimensional a cualquier interior. **IT** Questo disegno grafico del traliccio è tuftato con il pelo arricciato, ha un aspetto tridimensionale per il tuo arredamento.

Ogee Ocean - Hand tufted from 100% luxurious viscose for a subtle sheen.

DE Handgetuftet aus 100% luxuriöser Viskose für einen eleganten Glanz. **FR** Ce tapis au subtil motif en treillis de taille moyenne offre un contraste entre poil bouclé et poil tufté à la main. 100% viscose, il offre une brillance subtile. **ES** Tejida a mano en lujosa viscosa 100% para un brillo sutil. **IT** Taftato a mano in lussuosa viscosa 100% per una sottile lucentezza.

Chareau Pebble



Hand Tufted.
Pile 100% Viscose,
Backing 100% Cotton.
75 x 250cm 2'5 x 8'2"
RUGDG0515

Padua Natural



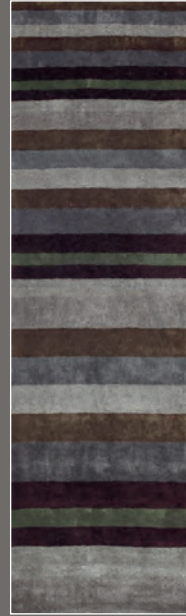
Hand Tufted.
Pile 100% Wool,
Backing 100% Cotton.
75 x 250cm 2'5 x 8'2"
RUGDG0601

Tanchoi Berry

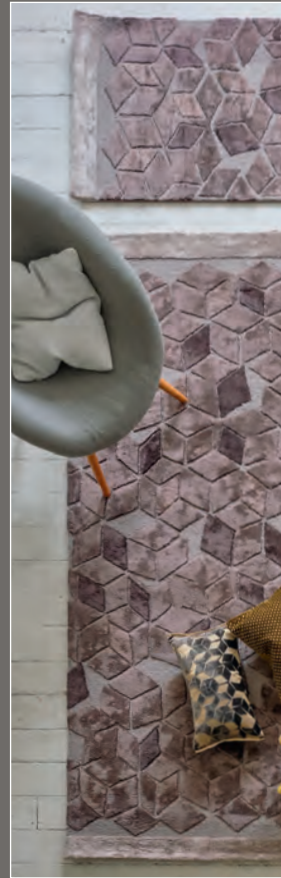


Hand Tufted.
Pile 50% Tencel™ Lyocell,
50% Viscose,
Backing 100% Cotton.
75 x 250cm 2'5 x 8'2"
RUGDG0559

Tanchoi Graphite



Hand Tufted.
Pile 50% Tencel™ Lyocell,
50% Viscose,
Backing 100% Cotton.
75 x 250cm 2'5 x 8'2"
RUGDG0560



Chareau Pebble - Hand tufted in 100% looped viscose with a tip sheared finish, the neutral and grey tones create a bold graphic design.

DE Ein handgetufteter Schlingenteppich aus 100% reiner Viskose mit einer kippgescherten Oberfläche. Ein mutiges grafisches Design in neutralen und grauen Farbtönen. **FR** Touffetés à la main en viscose 100% bouclée avec une finition ciselée, les tons neutres et gris créent un design graphique audacieux. **ES** Tejida a mano en viscosa 100% con un acabado punteado, los tonos neutros y grises crean un diseño gráfico audaz. **IT** Trapuntato a mano in viscosa loop 100% con finitura a punta, i toni neutri e grigi creano un audace.

Padua Natural - Skilfully hand tufted in a superior pure wool for improved softness, and with the added practicality of wool being a naturally warm and resilient fibre, this runner is suitable for high-traffic areas in your home.

DE Hand getuftet aus reiner Wolle für einen besonders weichen Griff. Dieser Läufer eignet sich durch die sehr zweckmäßigen Eigenschaften der Wolle auch für stark frequentierte Bereiche in Ihrem Zuhause. **FR** Tuftée à la main avec habileté dans une laine pure de qualité supérieure. Douce et pratique, la laine est une fibre naturellement chaude et résistante, convenant aux zones de fort passage dans la maison. **ES** Hábilmente tejida a mano en bucle en lana pura superior para mayor suavidad. La lana es una fibra naturalmente caliente y resistente, así que esta alfombra de lujo es también conveniente para las zonas de mayor tráfico en su hogar. **IT** Taftato a mano con pura lana pregiata per una maggiore morbidezza, gode anche della praticità della lana stessa, essendo questa una fibra naturalmente calda e resiliente, ed è adatto ad aree ad alto passaggio.

Tanchoi Berry - Hand tufted in a 50% Tencel™ Lyocell 50% viscose blend for exceptional colour and softness, this contemporary runner is a statement piece with a luxurious finish.

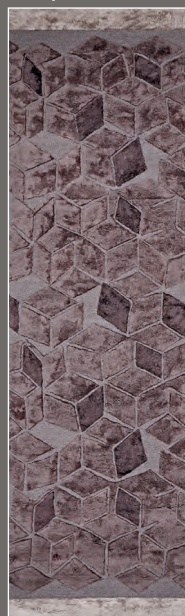
DE Hand getuftet in einer 50% Tencel™ Lyocell 50% Viskose Mischung für eine außergewöhnliche Farbdarstellung und Weichheit, ist dieser zeitgenössische Läufer ein Statement Stück mit einem luxuriösen Finish. **FR** Tufté main dans un mélange 50% viscose 50% Tencel™ Lyocell pour une douceur exceptionnelle. **ES** Hecho a mano en una mezcla al 50% de Tencel™ Lyocell y viscosa que le da un color y una suavidad excepcionales, esta alfombra runner es una pieza con un acabado de lujo. **IT** Tuftato a mano, 50% viscosa e 50% in Tencel™ Lyocell, per un colore e una morbidezza eccezionale, questo tappeto moderno è un capo di tendenza con una finitura di lusso.

Tanchoi Graphite - Hand tufted in a 50% Tencel™ Lyocell 50% viscose blend for exceptional colour and softness, this contemporary runner is a statement piece with a luxurious finish.

DE Hand getuftet in einer 50% Tencel™ Lyocell 50% Viskose Mischung für eine außergewöhnliche Farbdarstellung und Weichheit, ist dieser zeitgenössische Läufer ein Statement Stück mit einem luxuriösen Finish. **FR** Tufté main dans un mélange 50% viscose 50% Tencel™ Lyocell pour une douceur exceptionnelle. **ES** Hecho a mano en una mezcla al 50% de Tencel™ Lyocell y viscosa que le da un color y una suavidad excepcionales, esta alfombra runner es una pieza con un acabado de lujo. **IT** Tuftato a mano, 50% viscosa e 50% in Tencel™ Lyocell, per un colore e una morbidezza eccezionale, questo tappeto moderno è un capo di tendenza con una finitura di lusso.

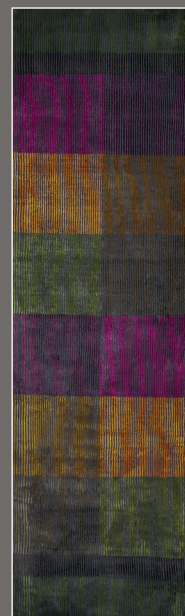


Fitzrovia Espresso



Hand Tufted. Pile 50% Wool, 50% Viscose, Backing 100% Cotton.
75 x 250cm 2'5 x 8'2"
RUGDG0628

Sarang Chocolate



Hand Tufted. Pile 50% Wool, 50% Viscose, Backing 100% Cotton.
75 x 250cm 2'5 x 8'2"
RUGDG0626

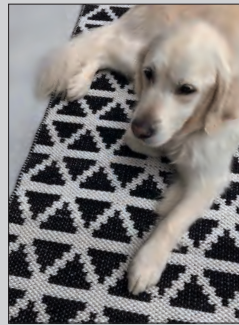
Fitzrovia Espresso - This elegant geometric runner is created with a hand tufted wool loop background and graphic raised cut pile motifs in viscose.

DE Ein elegantes, geometrisches Design aus handgetufteten Wollschlaufen und grafischen Schnittmotiven aus Viskose. **FR** Cet élégant tapis géométrique est créé avec un fond bouclé en laine tufté à la main. **ES** Esta elegante alfombra geométrica está creada con un fondo de bucle de lana tejido a mano y motivos gráficos de pila cortada en viscosa. **IT** Questo elegante tappeto geometrico è stato creato con uno sfondo in lana taftata a mano e motivi grafici in viscosa e delimitato da una sottile striscia di colore in alto e in basso.

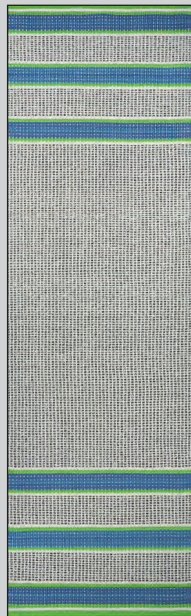
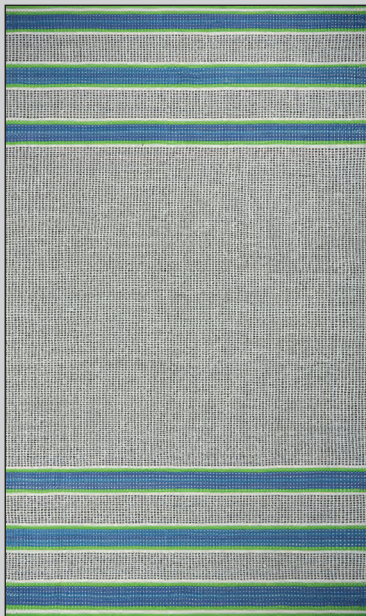
Sarang Chocolate - This statement runner is hand tufted in fine alternating bands of wool and viscose in blocked ribs of colour with a subtle sheen.

DE Dieser wunderschöne Statement Teppich wurde von unserem atemberaubenden Velour Karo inspiriert und aus feinen Wolle und Viskose Fasern handgetuftet. **FR** Ce tapis tufté à la main est composé de fines rayures alternant laine et viscose. **ES** Esta llamativa alfombra está rematada a mano en finas bandas alternas de lana y viscosa, en colores alternos y de un brillo sutil. **IT** Questo tappeto è taftato a mano in sottili fili di lana e viscosa alternati a costine di colore, con una sottile lucentezza.

Come rain or shine, these innovative rugs can be used inside and out

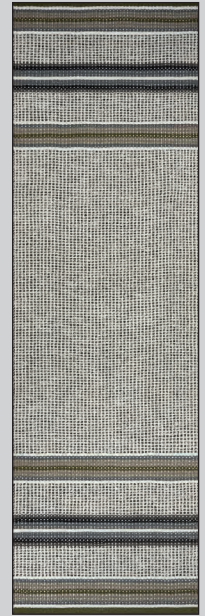
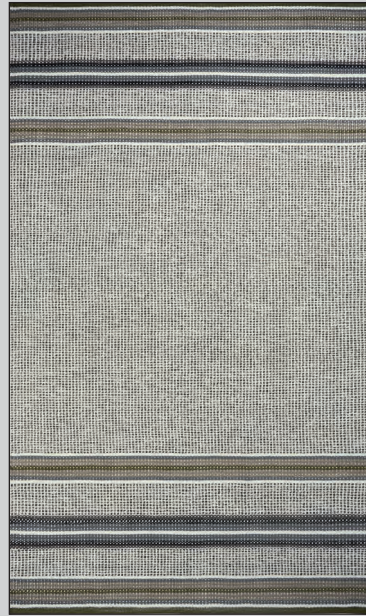


Pompano Cobalt



Hand Woven, Flat Weave. 100% PET Polyester. No Backing.
 Standard 160 x 260cm 5'2 x 8'5" RUGDG0574
 Large 200 x 300cm 6'6 x 9'8" RUGDG0575
 Extra Large 250 x 350cm 8'2" x 11'5" RUGDG0588
 Runner 75 x 250cm 2'5 x 8'2" RUGDG0573

Pompano Natural



Hand Woven, Flat Weave. 100% PET Polyester. No Backing.
 Standard 160 x 260cm 5'2 x 8'5" RUGDG0577
 Large 200 x 300cm 6'6 x 9'8" RUGDG0578
 Extra Large 250 x 350cm 8'2" x 11'5" RUGDG0589
 Runner 75 x 250cm 2'5 x 8'2" RUGDG0576

Pompano Cobalt - Pompano Cobalt rug features a black and white textured body and is finished at both ends with bold cobalt and emerald stripes and a coloured woven hem.

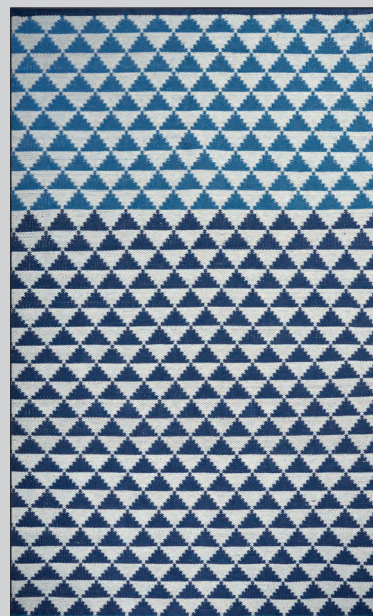
DE Ein Schwarz-weißer strukturierter Teppich mit kräftigen blauen und grünen Streifen sowie einem farbig gewebten Saum. **FR** Le tapis Pompano Cobalt présente une texture noire et blanche et se termine par des rayures de couleur cobalt et émeraude aux deux extrémités avec un ourlet tissé coloré. **ES** Las alfombras Pompano Cobalto despliegan un cuerpo texturado en blanco y negro y están rematadas en ambos extremos con atrevidas rayas cobalto y esmeralda y un dobladillo de tejido coloreado. **IT** Il tappeto Pompano Cobalto presenta una struttura nera e bianca ed è rifinito a entrambe le estremità con vivaci strisce color cobalto e smeraldo e un orlo colorato.

Pompano Natural - Pompano Natural rug features a black, natural and white textured body and are finished at both ends with grey and nutmeg stripes and a moss coloured woven hem.

DE Ein Schwarz-weißer strukturierter Teppich mit grauen und braunen Streifen sowie einem farbig gewebten Saum. **FR** Le tapis Pompano Naturel présente une texture noire et blanche et se termine par des rayures de couleur grises et muscade aux deux extrémités avec un ourlet tissé coloré. **ES** Las alfombras Pompano Natural despliegan un cuerpo texturado en blanco y negro y natural y están rematadas en ambos extremos con rayas marrón y gris y un dobladillo de tejido coloreado en musgo. **IT** Il tappeto Pompano Natural presenta una struttura nera, naturale e bianca ed è rifinito a entrambe le estremità con vivaci strisce color grigio e nocciola e un orlo verde muschio.

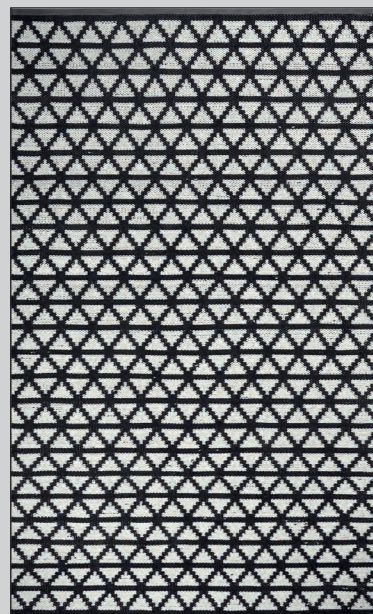


Biscayne Cobalt



Hand Woven, Flat Weave. 100% PET Polyester. No Backing.
 Small 90 x 150cm 2'11" x 4'11" RUGDG0585
 Standard 160 x 260cm 5'2" x 8'5" RUGDG0579
 Large 200 x 300cm 6'6" x 9'8" RUGDG0580
 Extra Large 250 x 350cm 8'2" x 11'5" RUGDG0581

Delray Noir



Hand Woven, Flat Weave. 100% PET Polyester. No Backing.
 Small 90 x 150cm 2'11" x 4'11" RUGDG0587
 Standard 160 x 260cm 5'2" x 8'5" RUGDG0582
 Large 200 x 300cm 6'6" x 9'8" RUGDG0583
 Extra Large 250 x 350cm 8'2" x 11'5" RUGDG0584



This Specialist PET yarn can be recycled.

DE Dieses spezielle PET Garn kann recycelt werden. **FR** Ce fil en PET est recyclable. **ES** Estas fibras especiales PET pueden ser recicladas. **IT** Questo filato in PET puo' essere riciclato.



Biscayne Cobalt - Biscayne Cobalt rug features a mainly cobalt blue and white geometric design, with a contrasting section in turquoise and white, finished with woven hems.

DE Der Teppich Biscayne Cobalt zeichnet sich durch sein vorwiegendes kobaltblau- und weißes geometrisches Design mit Kontrasten in Türkis und Weiß sowie den gewebten Säumen aus. **FR** Le tapis Biscayne Cobalt présente un dessin géométrique bleu cobalt et blanc, combiné avec une légère teinte turquoise et blanche et se terminant par des ourlets tissés. **ES** La alfombra Biscayne Cobalt presenta un diseño geométrico principalmente en azul cobalto y blanco, con un contraste en una combinación de blanco y turquesa y esta rematada con dobladillos tejidos. **IT** Il tappeto Biscayne Cobalt presenta un disegno geometrico prevalentemente blu cobalto e bianco, con un contrasto in una combinazione turchese e bianca e poi rifinito con orli intrecciati.

Delray Noir - Delray Noir rug features a black and white geometric design and is finished at both ends with a grey woven hem.

DE Der Teppich Delray Noir hat ein geometrisches Design in Schwarz und Weiß und ist an beiden Enden mit einem grau gewebten Saum versehen. **FR** Le tapis Delray Noir au motif géométrique noir et blanc aux deux extrémités se termine par un ourlet tissé dans un ton gris. **ES** La alfombra Delray Noir cuenta con un diseño geométrico blanco y negro y está rematada en ambos extremos con un dobladillo de tejido gris. **IT** Il tappeto Delray Noir presenta un design geometrico bianco e nero ed è rifinito alle due estremità con un orlo grigio.

Mascarade Arlequin



Hand Tufted Pile 50% Wool 50% Viscose.
Backing 100% Cotton.
Standard 160 x 260cm 5'2" x 8'5" RUGCL0331
Large 200 x 300cm 6'6" x 9'8" RUGCL0332
Extra Large 250 x 350cm 8'2" x 11'5" RUGCL0333

Geisha Prisme



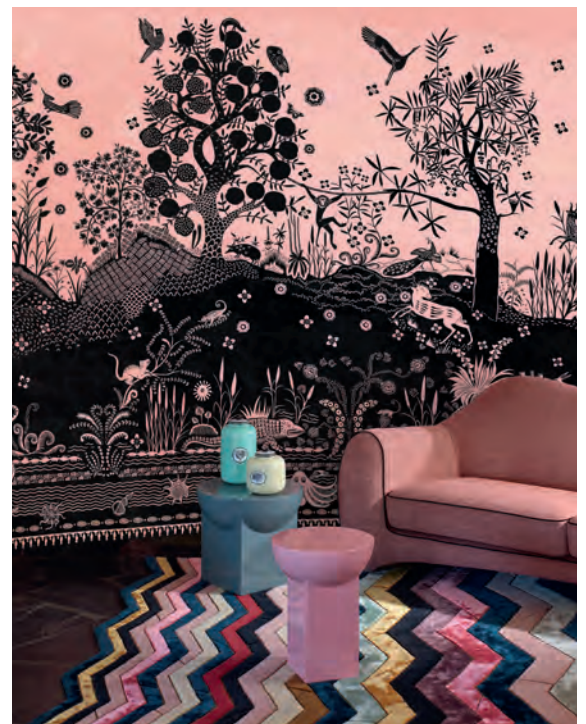
Hand Tufted Pile, 50% Wool, 50% Viscose.
Backing 100% Cotton
Standard 160 x 260cm 5'2" x 8'5" RUGCL0335
Large 200 x 300cm 6'6" x 9'8" RUGCL0336
Extra Large 250 x 350cm 8'2" x 11'5" RUGCL0337



Detail of Geisha Prisme



Detail of Pietra Dura Multicolore



Mascarade Arlequin - Diamonds of colour are tufted with a mix of wool and viscose yarns in this fabulous graphic rug with varying pile heights and a unique cut away effect border.

DE Farbdiamanten sind aus einer Mischung von Wolle und Viskose Garnen gewebt. Ein einzigartiger Hoch- und Tiefflor Effekt vervollständigt diesen atemberaubenden Teppich.
FR Un fabuleux tapis graphique composé des diamants de couleurs tuftés dans un mélange de fils de laine et viscose avec des hauteurs de poils différentes et une bordure avec un effet coupé unique.
ES Los colores brillantes y los motivos ikat se combinan con una mezcla de hilos de lana y viscosa en esta fabulosa alfombra gráfica con una variedad de grosores y un efecto de corte único.
IT Diamanti di colore sono trapuntati con un mix di filati di lana e viscosa in questo tappeto grafico favoloso con varie altezze di tessuto e un unico bordo con effetto tagliato.

Geisha Prisme - Bold areas of bright colour and ikat motifs are tufted with a mix of wool and viscose yarns in this fabulous graphic rug with varying pile heights, intricate carving and a unique pattern.

DE Der grafische Teppich verfügt über kräftige Farbflächen und Ikat-Motive, die in das Woll- und Viskosegarn getuftet wurden. Ein atemberaubenden Teppich mit unterschiedlichen Florhöhen, einem einzigartiges Design und einem aufwändigem Muster.
FR Tufté de laine et de viscose avec différents effets de hauteurs, ce tapis très graphique offre un style unique.
ES Los colores brillantes y los motivos ikat se combinan con una mezcla de hilos de lana y viscosa en esta fabulosa alfombra con diferentes grosores y un estampado único.
IT Di colore brillante e motivi ikat vengono tuftati con un mix di filati di lana e viscosa in questo favoloso tappeto grafico. Disponibile in diversi spessori che rendono questi tappeti unici e lussuosi.

Pietra Dura Multicolore



Hand Tufted Pile, 50% Wool, 50% Viscose. Backing 100% Cotton
 Standard 160 x 260cm 5'2" x 8'5" RUGCL0344
 Large 200 x 300cm 6'6" x 9'8" RUGCL0345
 Extra Large 250 x 350cm 8'2" x 11'5" RUGCL0346

Grand Tour Tomette



Digitally Printed Pile 100% Polyamide.
 Backing 100% Felt.
 250cm Diameter 8'2" RUGCL0334

Christian Lacroix RUGS COLLECTION

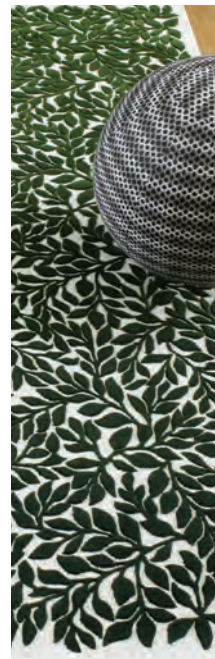


Pietra Dura Multicolore - Fabulous multi colour shades, with fine lines of silver metallic thread and tufted with a mix of wool and viscose yarns with varying pile heights, graphic carving and a unique cut away effect edge.

DE Ein fabelhafter Teppich in mehrfarbigen Farbnuancen mit feinen Linien aus silbernen Metallfäden. Getuftet aus einer Woll-Viskose Mischung, mit unterschiedlichen Florhöhen und grafischen Effekten. **FR** S'inspire d'une marqueterie de marbre, ici disposée en chevrons. L'esprit graphique de ce tapis est mis en valeur par un liseré métallique. Son mélange tufté de laine et de viscose joue sur différentes hauteurs et sur une bordure découpée. **ES** Fabulosos tonos multicolores, con finas líneas de hilo plateado y anudada en una mezcla de viscosa y lana. Destacan en esta impactante alfombra de lujo la pila de altura variada, el esculpido muy gráfico y un singular borde de efecto recortado. **IT** Con favolose sfumature multicolore e sottili linee di filo metallico argentato, taftato con un mix di filati di lana e viscosa.

Grand Tour Tomette - This striking large circular rug is printed onto a new quality offering durability with a dense low pile finish which enhances the detail of the unique digital print process.

DE Ein auffallender, großer Kreis ist digital auf eine neue Qualität gedruckt, die Strapazierfähigkeit mit einem dichten Flor-Finish kombiniert. **FR** Un nouveau tapis rond imprimé en numérique sur une nouvelle qualité apportant de la résistance grâce à une finition de poils denses. **ES** Esta llamativa alfombra circular esta digitalmente impresa en una nueva calidad ofreciendo durabilidad y densidad. **IT** Questo meraviglioso tappeto circolare di grandi dimensioni è stampato in digitale su una nuova qualità che offre durata con una finitura di tessuto densa.

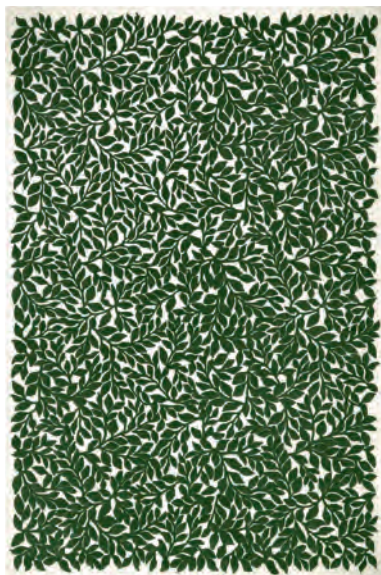


Detail of
Bosquet Roseau



Detail of
Bosquet Carbone

Bosquet Roseau



Hand Tufted Pile, 100% Wool.
Backing 100% Cotton
Standard 160 x 260cm 5'2" x 8'5" RUGCL0338
Large 200 x 300cm 6'6" x 9'8" RUGCL0339
Extra Large 250 x 350cm 8'2" x 11'5" RUGCL0340

Mascarade Graphite



Hand Tufted Pile, 50% Wool, 50% Viscose.
Backing 100% Cotton
Standard 160 x 260cm 5'2" x 8'5" RUGCL0341
Large 200 x 300cm 6'6" x 9'8" RUGCL0342
Extra Large 250 x 350cm 8'2" x 11'5" RUGCL0343



Bosquet Roseau - A 100% wool composition, in both tufted and loop pile for all interior spaces.

DE Getuftete Schlingenware aus 100% Wolle, für jedes Interior geeignet. **FR** Le subtil dégradé de couleur allié à un surprenant effet de relief du motif de feuillage en laine tuftée et bouclée créera un effet spectaculaire dans votre intérieur. **ES** Una composición 100% de lana, perfecta para todos los espacios interiores. **IT** Una composizione 100% lana, questi tappeti sono sia arricciati che tuftati e si adattano a tutti i tipi di spazi interni.

Mascarade Graphite - Varying pile heights and a unique cut away effect border completes this stunning new sophisticated colourway of our best selling Mascarade Arlequin rug.

DE Wechselnder Faserflor und der einzigartige Schnitteffekt schließen diese neue, atemberaubende, anspruchsvolle Farbmischung unseres best verkauften Mascarade Arlequin Teppichs ab. **FR** Son mélange tufté de laine et de viscose joue sur différentes hauteurs et sur une bordure découpée pour un effet spectaculaire. **ES** La variedad de alturas del pelo y el exclusivo borde de efecto recortado completan este nuevo y sofisticado color de nuestra alfombra bestseller Mascarade Arlequin. **IT** Le diverse altezze e l'unicità dei bordi che seguono il motivo geometrico completano questa nuova sorprendente e sofisticata colorazione del nostro tappeto Mascarade Arlequin piu' venduto.

Bosquet Carbone



Hand Tufted Pile, 100% Wool.
Backing 100% Cotton
250cm Diameter 8'2" RUGCL0347



Tempera - Multicolore Garance



Hand Tufted Pile 22% Wool 78% Viscose.
Backing 100% Cotton.
Standard 160 x 260cm 5'2" x 8'5" DHRCL003/01
Large 200 x 300cm 6'6" x 9'8" DHRCL004/01



Bosquet Carbone - Hand tufted in 100% wool in monochrome black and white for a dramatic impact to any interior space.

DE Hange tuftet aus 100% Wolle in Schwarz-weiß für einen dramatischen Look. **FR** Un travail de coupe délicat et minutieux met en relief les feuilles d'un noir profond et crée ce somptueux tapis bicolore. **ES** Tejida a mano en lana 100% en un monocromo blanco y negro para un impacto dramático en cualquier espacio interior. **IT** Taftato a mano in lana 100% in bianco e nero monocromatici, per un impatto drammatico. un unico bordo con effetto tagliato completano questo splendido tappeto di lusso.

Tempera - Multicolore Garance - The rich suffused colours of a painted horizon at sunset form the inspiration for this boldly striped and luxuriously textured rug.

DE Als Inspiration für diesen auffallend gestreiften und luxuriös texturierten Teppich dienten die kräftigen und leuchtenden Farben des Horizonts bei Sonnenuntergang. **FR** Ce luxueux tapis est composé de rayures texturées aux couleurs chatoyantes évoquant celles d'un coucher de soleil. **ES** Los ricos y envolventes colores de un horizonte pintado al atardecer conforman la inspiración de esta lujosa y texturizada alfombra de atrevidas rayas. **IT** Gli intensi colori che dipingono l'orizzonte all'ora del tramonto sono l'ispirazione per questo tappeto audacemente rigato.

Bespoke Sizing

Please refer to the table on the right for details by brand of designs available to order in bespoke sizes. Please note maximum width and length restrictions per design. All bespoke rugs are calculated using a m² / ft² price and will incur a m² / ft² surcharge. For any size above 2m x 3m (6'6" x 9'8") transport will be quoted on an individual basis. Please contact your local sales office for full details.

Hand made products may present slight variations in colour, aspect or dimension. As with all handmade/bespoke items there may be a size tolerance of up to 5%.

GRÖSSEN NACH MASS

Bitte beachten sie die untenstehende tabelle auf der rechten seite ür die details welches design man in Sondermaßen bestellen kann. Bitte beachten sie die maximal mögliche breite und Länge je nach design. Alle maßgefertigten teppiche werden kalkuliert mit dem qm preis zuzüglich einem qm/ preiszuschlag, die frachtkosten für alle Größen über 2m x 3m werden individuell angegeben. Bitte wenden sie sich an Ihren örtlichen kundenservice für weitere details

Handgefertigte Produkte können eine leichte Abweichung in Farbe, Optik oder Größe vorweisen. Wie bei allen Handgemachten/maßgeschneiderten beträgt die Größentoleranz bis zu 5%.

TAPIS SUR MESURE

Veillez-vous reporter au tableau a la droite pour connaître par marque les références disponibles sur mesure. Merci de bien vouloir noter les largeurs et longueurs maximum par référence. Le prix de tous les tapis taillés sur mesure est calculé par m² et entraînera une surcharge calculée de la même manière. La livraison pour les tailles plus de 2m x 3m sera cité sur une base individuelle. N'hésitez pas à consulter le service clients pour de plus amples informations.

Les produits faits main peuvent présenter de légères variations de couleur, d'aspect ou de dimension. Tout comme les articles faits main, les articles sur mesure peuvent présenter une tolérance de taille d'environ 5%.

ALFOMBRAS A MEDIDA

Por favor, consulte la tabla a la derecha para obtener información, por marca, de los diseños disponibles con tamaños a medida. Tenga en cuenta las restricciones de anchura y longitud por diseño. Todas las alfombras a medida se calculan utilizando un precio por m² y tendrán un cargo adicional por m² para cualquier tamaño por encima de 2m x 3m el transporte será cobrado de manera individual. Póngase en contacto con su representante de ventas o nuestro servicio de atención al cliente para obtener más información.

Los productos hechos a mano pueden presentar variaciones en el color, aspecto o tamaño. Como con todos los artículos hechos a mano / medida puede haber una tolerancia de tamaño de hasta 5%.

SU MISURA

Potete riferivi alla tabella a destra per i dettagli dei modelli che si possono ordinare su misura. Tutti i tappeti su misura devono essere ordinati calcolando i metri quadri. Per le misure superiori a 2 x 3 metri il trasporto sara' quotato a parte. Potete contattare il vostro agente di zona per ulteriori informazioni. Vi invitiamo a visionare le restrizioni relative alla lunghezza e larghezza.

Prodotto fatto a mano. Potrebbe presentare delle leggere variazioni nel colore, aspetto e dimensioni. Trattandosi di un prodotto fatto a mano potrebbe presentare delle variazioni nelle misure con una tolleranza fino al 5%.

Bespoke Sizing Rugs & Runners

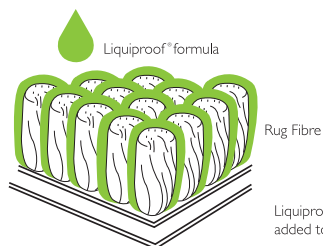
Designers Guild	Max Dimensions Available	
Alphonse Moss	4 x 12 m	(13'1" x 39'4")
Barchessa Slate	4 x 4 m	(13'1" x 13'1")
Capisoli Granite/ Teal	4 x 10 m	(13'1" x 32'9")
Caretti Linen/Pebble	5.4 x 8.2 m	(17'7" x 26'9")
Chandigarh Aqua/Berry	6 x 12 m	(19'8" x 39'4")
Chateau Ocean/Pebble	4 x 4 m	(13'1" x 13'1")
Dorsoduro Celadon/Fresco	6 x 12 m	(19'8" x 39'4")
Eberson Aqua/Cobalt/Platinum/Slate/Moss	4 x 10 m	(13'1" x 32'9")
Fitzrovia Espresso	4 x 4 m	(13'1" x 13'1")
Kappazuri Zinc	4 x 12 m	(13'1" x 39'4")
Montmartre Zinc	4 x 10 m	(13'1" x 32'9")
Ogee Ocean	4 x 4 m	(13'1" x 13'1")
Padua Azure/Natural	4 x 10 m	(13'1" x 32'9")
Phipps Sky	4 x 10 m	(13'1" x 32'9")
Rheinsberg Granite/Sage	4 x 4 m	(13'1" x 13'1")
Roxburgh Linen	4 x 10 m	(13'1" x 32'9")
Sarang Chocolate/Fuchsia	4 x 4 m	(13'1" x 13'1")
Saraille Dusk/Linen	4 x 10 m	(13'1" x 32'9")
Savoie Azure	4 x 10 m	(13'1" x 32'9")
Tanchoi Berry/Graphite	4 x 4 m	(13'1" x 13'1")

Designers Guild Indoor / Outdoor	Max Dimensions Available	
Biscayne Cobalt	5 x 25 m (16'5" x 82')	(0.45m minimum width)
Delray Noir	5 x 25 m (16'5" x 82')	(0.45m minimum width)
Pompano Cobalt/Natural	5 x 25 m (16'5" x 82')	(0.45m minimum width)

Christian Lacroix	Max Dimensions Available	
Bosquet Roseau	5 x 8 m	(16' 4" x 26' 2")
Bosquet Carbone	4 m diameter	(13'1" diameter)
Mascarade Arlequin/Graphite	4 x 10 m	(13' 1" x 32' 9")
Pietra Dura Multicolore	4 x 10 m	(13' 1" x 32' 9")
Tempera Multicolore Garance	4 x 10 m	(13' 1" x 32' 9")

Extra Protection for your Rug

We offer a bespoke treatment for your rug which utilises advanced nanotechnology to ensure protection from everyday stains. The treatment is an odourless, eco-friendly formula which creates an easy-clean protective barrier which repels dirt and prevents liquid stains. The highly durable treatment contains additional UV resistant qualities and reduces the effect of fading, all without altering the look and feel of the rug's natural fibres. This treatment can be requested when you order your rug.



Extra Schutz für Ihren Teppich

Wir bieten eine individuelle Behandlung für Ihren Teppich an, welche fortschrittliche Nanotechnologie verwendet, um den Schutz vor alltäglichen Flecken zu gewährleisten. Die Behandlung ist eine geruchlose, umweltfreundliche Formel, die eine einfache, saubere Schutzbarriere schafft, die Schmutz abhält und Flecken vorbeugt. Die Behandlung enthält zusätzliche UV-beständige Eigenschaften und reduziert den Effekt des Verblässens, ohne das Aussehen und die Griffigkeit der Naturfasern des Teppichs zu verändern. Sie können Ihren Teppich bei Bestellung mit dieser zusätzlichen Ausrüstung bestellen.

Une protection maximum pour votre tapis
Nous offrons un traitement sur mesure pour protéger votre tapis, grâce à la nanotechnologie. Un procédé avancé qui assure la protection contre les tâches quotidiennes. Le traitement se compose d'une formule inodore et écologique qui crée une barrière protectrice invisible. Efficace, il repousse la saleté et prévient les tâches suite au déversement de liquide. Le traitement est durable et résistant aux UV, ce qui minimise la décoloration dans le temps, le tout sans altérer l'aspect et la texture des fibres naturelles du tapis. Ce traitement est disponible sur demande, lors de votre prochaine commande de tapis.

Protección extra para tu alfombra

Ofrecemos un tratamiento a medida para su alfombra que utiliza nanotecnología avanzada para garantizar la protección contra las manchas cotidianas. El tratamiento es una fórmula inodora y ecológica que crea una barrera protectora fácil de limpiar que repele la suciedad y evita las manchas de líquido. Este tratamiento altamente duradero contiene cualidades adicionales resistentes a los rayos UV y reduce el efecto gastado, todo sin alterar el aspecto y tacto de las fibras naturales de la alfombra. Este tratamiento puede solicitarse cuando solicita su alfombra.

Una protezione extra per il tuo tappeto
Offriamo trattamenti speciali per tappeti utilizzando delle tecniche avanzate per proteggere il tappeto dalle macchie. Il trattamento e' inodore ed eco-friendly e crea una barriera protettiva contro sporco e liquidi. Il trattamento, inoltre, riduce l'effetto sbiadito dando un effetto naturale al tappeto. Il trattamento puo' essere richiesto quanto viene ordinato il tappeto.

Caring for Your Rug

General Care and Cleaning

A rug is often a focal point in a room, and proper care and maintenance will increase its longevity. To best care for your rug, we recommend that you lightly vacuum it on a regular basis using the nozzle attachment. Please take care to avoid using brush attachments since these can harm the rug fibres. Remember to always vacuum in the direction of the pile.

If a spillage occurs, blot immediately with a clean dry white cloth, making sure not to rub the spillage into the pile. Do not use harsh detergent. It is important not to walk or place items on the rug until it is completely dry to prevent lasting damage. To prevent rugs from slipping we recommend that you use a rug hold underlay.

Extra Protection for your Rug

See on page 40.

We always recommend treating your rug with our bespoke extra rug protection and cleaning by a specialist rug cleaner. Once your rug has been treated, please continue to vacuum the rug regularly as recommended. If a spillage does occur, please deal with it straight away by gently soaking up the spillage using a clean white cloth or a paper towel. For more information or to add this to your rug order please contact our Customer Service team.

Rug Fading

Please note that over time rug colours may fade, particularly under the influence of exposure to a strong natural light source/UV radiation. Rug fading is dependent on the amount of light exposure and the usage of the carpet.

Loose Fibres

Due to the nature of our handmade rugs, you may experience loose fibres which can be easily removed by gentle vacuuming with the nozzle attachment. Some continued shedding is a normal characteristic that diminishes after initial use. Loose threads should not be pulled but cut with sharp scissors at pile height. Please note that pile shedding does not affect the life of a rug.

Odour

You may experience an initial odour from your rug. This is normal for new product and once aired it will reduce significantly over time.

Pressure Marks and Pile Reversal

We recommend that you turn your rug regularly to ensure even wear. Any movement in the pile or pressure marking is normal and should be expected, especially in high traffic areas. Furniture feet will create indentations on any rug pile. To help reduce marking, regularly rotate furniture and any other heavy objects when possible. To help recover the pile, lift the pile using a fine comb. We recommend using furniture pads to help reduce pressure marks.

Specific Rug Care

The process by which a rug is cleaned is entirely dependent on the composition of the rug, so it is important that the cleaning guidelines are followed. In all instances we recommend that you use a professional rug cleaner; however should a spillage or stain occur, the below information will reduce the chance of a lasting stain.

Viscose / Rayon / Tencel™ Lyocell / Polyester Rugs

Due to the nature of viscose and rayon yarns, you may notice lasting distortion of the pile after liquid spillages. These fibres are plant based, and despite achieving an incredible shine, are very delicate. Tencel™ Lyocell and Polyester rugs are known for superior quality and greater resistance to water marking, however there are still times when a quick response is needed to save your rug from a spillage and you need to clean the carpet yourself.

Using a clean white cloth or paper towel absorb the spill, gently blotting the area starting from the edge of the spot and working your way to the centre. Be careful not to rub. Once the liquid has been blotted, use a clean cloth lightly dampened by water to dab the stain as much as possible. If possible, use a fine comb to raise the pile in direction with the remainder of the rug pile. Try to dry the pile with a low-heat hairdryer whilst continuing to comb as quickly as possible. It is important not to walk or place items on the rug until it is completely dry as this can lead to permanent marking. Finally, gently vacuum using the nozzle attachment.

Wool Rugs

Wool fibres have their own natural thin, protective layer. This allows wool to repel dirt which gives you the opportunity to act if a spillage occurs on your rug. Clean the spot lightly with a damp cloth or an absorbing paper towel. Be careful not to rub. Diluted mild detergent may help in removing stubborn stains, however we always recommend using a professional rug cleaner.

Digitally Printed and Screen Printed Rugs

Digital printing and screen printing is a process which achieves the highest quality print detail. To deal with spillages, soak up as much of the liquid or substance as possible working from the edge to the centre of the spot. Clean the area lightly with a clean damp cloth or white absorbent paper dabbing only, without rubbing or scrubbing and leave to dry. Please note that failure to act may result in colour fading.

Indoor / Outdoor Rugs

Made from a specialist PET polyester yarn, these zero pile rugs are easy to clean, lightweight and reversible. Ideal for any floor that might be susceptible to high traffic or getting wet, as well as being great for outdoor use. As with all our outdoor furnishings, please note that these rugs should not be left outside in the elements or in direct sunlight for long periods of time, and care should be taken to dry out the rug should it get soaking wet. Please ensure that both the rug and the area where it will be placed are dry before placing the rug. To ensure safety and to prevent slipping, we recommend the use of a rug hold regardless of the flooring on which the rug is placed. Regular gentle vacuuming is recommended using the nozzle attachment, and the occasional gentle shake will keep these rugs looking their best. To remove dirt or spillages, spot clean by mixing a solution of water and mild soap. With a clean white cloth, gently blot from the outside of the spill to the interior to prevent spreading. Alternatively, rinse with an outdoor hose, and hang until thoroughly dry. Do not machine wash or machine dry, and do not use bleach. This specialist ♻️PET polyester yarn can be recycled where facilities allow.

Please note that the scale of the rug artwork may vary between sizes and may differ slightly from the image shown in the brochure.

For more information about rug care please contact Customer Services.



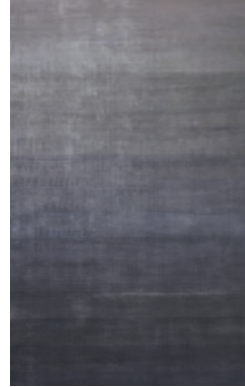
DESIGNERS GUILD



Alphonse Moss
Page 7



Barchessa Slate
Page 16



Capisoli Granite
Page 20



Capisoli Teal
Page 12



Chandigargh Aqua
Page 26



Chandigargh Berry
Page 22



Chareau Ocean
Page 27



Chareau Pebble
Page 14



Dorsoduro Fresco
Page 17



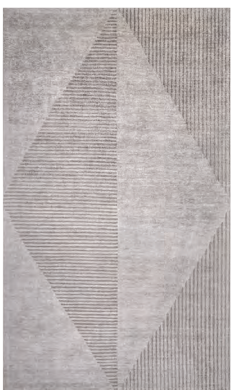
Eberson Aqua
Page 12



Eberson Cobalt
Page 26



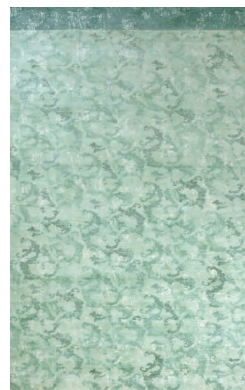
Eberson Moss
Page 23



Kappazuri Zinc
Page 6



Katiya Platinum
Page 21



La Rotonda Pale Aqua
Page 13



Montmartre Zinc
Page 5



Caretto Linen
Page 15



Caretto Pebble
Page 18



Dahlia Noir Slate
Page 5



Delft Flower Noir
Page 24



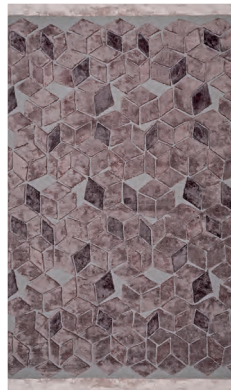
Dorsoduro Celadon
Page 29



Eberson Platinum
Page 25



Eberson Slate
Page 18



Fitzrovia Espresso
Page 8



Impasto Celadon
Page 29



Ogee Ocean
Page 10



Padua Azure
Page 28



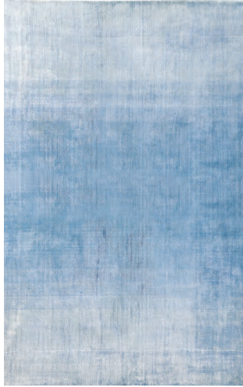
Padua Natural
Page 16



Peonia Grande Zinc
Page 19

DESIGNERS GUILD

Indoor/Outdoor & Runners



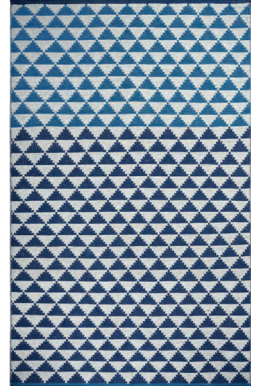
Phipps Sky
Page 28



Rheinsberg Granite
Page 25



Rheinsberg Sage
Page 15



Biscayne Cobalt
Page 35



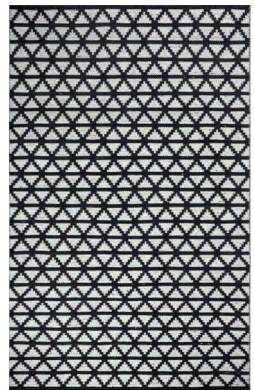
Roxburgh Linen
Page 20



Sarang Chocolate
Page 8



Sarang Fuchsia
Page 10



Delray Noir
Page 35



Saraille Dusk
Page 27



Saraille Linen
Page 14



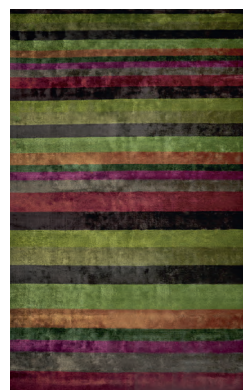
Savoie Azure
Page 13



Pompano Cobalt
Page 34



Tanchoi Graphite
Page 22



Tanchoi Berry
Page 23



Pompano Natural
Page 34

Rugs

Runners

Christian Lacroix



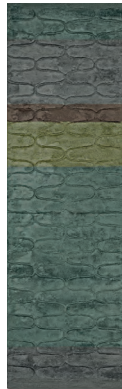
Chateau Ocean
Page 30



Chateau Pebble
Page 32



Fitzrovia Espresso
Page 33



Ogee Ocean
Page 31



Padua Azure
Page 30



Padua Natural
Page 32



Pompano Cobalt
Page 34



Rheinsberg Granite
Page 31



Rheinsberg Sage
Page 31



Sarang Chocolate
Page 33



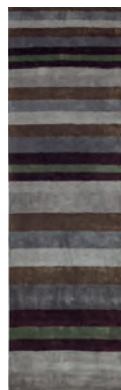
Pompano Natural
Page 34



Sarang Fuchsia
Page 30



Tanchoi Berry
Page 32



Tanchoi Graphite
Page 32



Bosquet Carbone
Page 39



Bosquet Roseau
Page 38



Geisha Prisme
Page 36



Grand Tour Tomette
Page 37



Mascarade Arlequin
Page 36



Mascarade Graphite
Page 38




Pietra Dura Multicolore
Page 37



Tempera Multicolore Garance
Page 39




 designersguild

 designersguildgroup

 designersguild

 @DesignersGuild

 designersguild

#dgyourspace

LADG0267

Our full range is available worldwide.
Please visit [designersguild.com/stockists](https://www.designersguild.com/stockists)

Many of our accessories are seasonal and certain references may not be continued once stock is exhausted. Please check stock availability before placing your order. Please contact your local sales office for further details of the range. Colours shown in this brochure are accurate within the limitations of the printing process.

designersguild.com

Head office tel. +44 (0)20 7893 7400

DESIGNERS GUILD is a registered trademark of Designers Guild Ltd. ©DESIGNERS GUILD, 2019