

DESIGNERS GUILD

rug collection



autumn winter '20

rugs collection

A myriad of modern rugs in statement textures and shapes. Choose from contemporary patterns, elegant ombres, evocative florals and perfectly shaded plains.

rug techniques

digitally
printed



hand
knotted



machine
loom



hand
tufted



handwoven
& handloom



flat
woven



screen
printing



contents

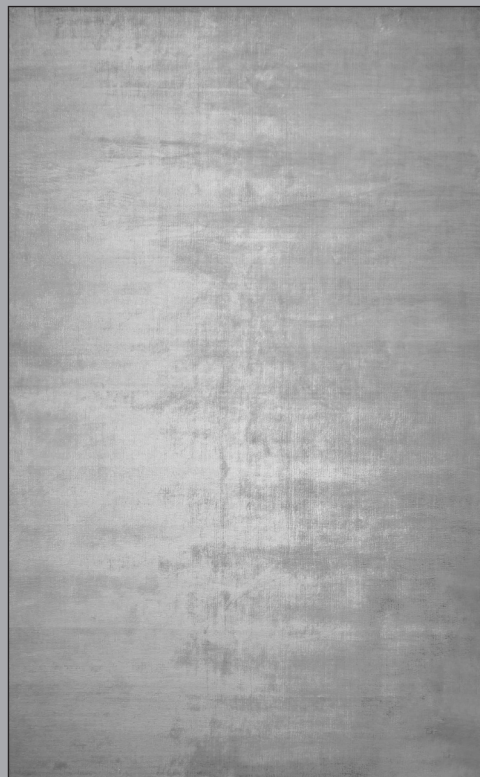
Designers Guild Rug Collection	4
Designers Guild Runners	52
Designers Guild Indoor/Outdoor	62
Christian Lacroix Rug Collection	68
Bespoke Sizing	76
Extra Protection For Your Rug	78
Caring For Your Rug	80
The Range At A Glance	90

[View the full range of cushions & throws in our accessories brochure](#) ▶

Eberson Platinum *

A beautiful ombré rug fading through tones of platinum and greys. Woven in fine viscose on a broadloom and dried in the sun giving an intense and unique lustre to the yarns.

DE In feiner Viskose auf einem breiten Webstuhl gewebt und in der Sonne getrocknet, was für einen intensiven und einzigartigen Glanz des Garns sorgt. **FR** Réalisé avec une fine viscose sur un grand métier à tisser, ce tapis a séché au soleil ce qui lui confère une brillance et une intensité exceptionnelle. **ES** Tejido en fina viscosa y secada al sol lo que le da un brillo intenso y único. **IT** Uno tappeto ombré composto in pura viscosa e lavorato a telaio largo. L'asciugatura al sole dona una lucentezza intensa al filato.



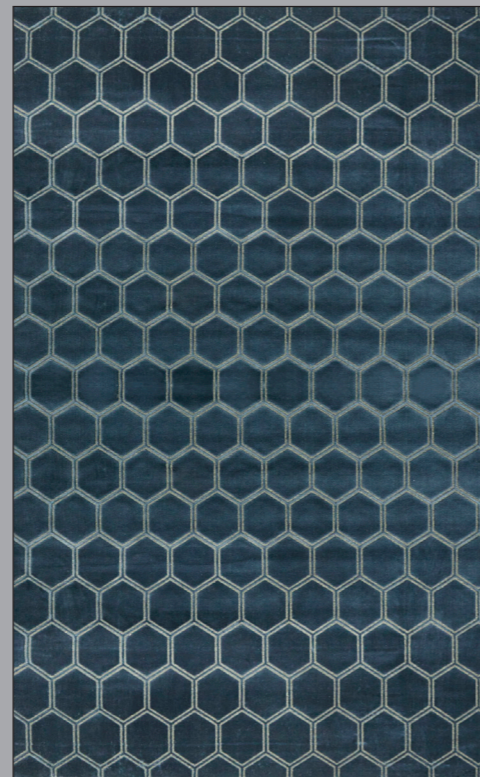
Hand Loom. Pile 100% Viscose,
Backing 100% Cotton.

Standard: 160x260cm 5'2x8'5" RUGDG0344
Large: 200x300cm 6'6x9'8" RUGDG0345
Extra Large: 250x350cm 8'2x11'5" RUGDG0346

Manipur Delft

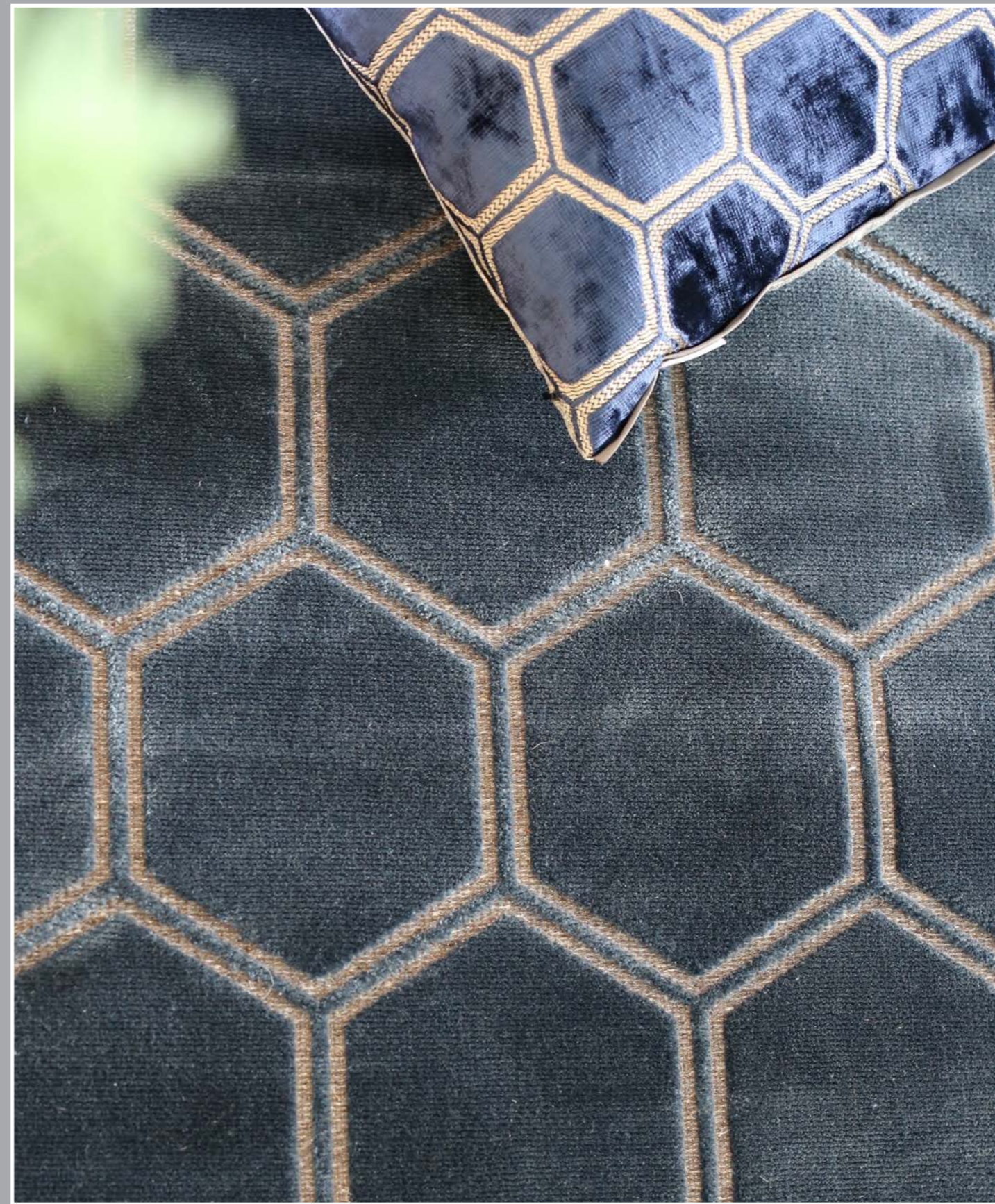
Based on our gorgeous Manipur velvet fabric, this stylish floor rug features perfectly scaled viscose hexagons in a deep delft tone with a unique cool woven wool ground.

DE Dieser traumhaft schöne Teppich wurde von unserem Manipur Velourstoff inspiriert und zeigt ein gleichmäßiges Sechseck Design in einem tiefen Delftblau auf einem hellen, gewebten Wolluntergrund. **FR** Basé sur notre magnifique tissu en velour Manipur, ce tapis de sol élégant présente des hexagones de viscose parfaitement mis à l'échelle dans un ton profond de bleu de Delft tissé laine. **ES** Basado en nuestra hermosa tela de terciopelo Manipur, esta elegante alfombra presenta hexágonos de viscosa perfectamente escalados en un tono azul delft profundo con un exclusivo fondo de lana tejida. **IT** Ispirato al nostro splendido velluto Manipur, questo elegante tappeto presenta esagoni di viscosa perfettamente squadrati in un tono intenso e trama in lana intrecciata unica nel suo genere.



Machine Loom with Cut Pile. Pile 100% Viscose,
Base 95% Wool 5% Polyamide.

Standard: 160x260cm 5'2x8'5" RUGDG0694
Large: 200x300cm 6'6x9'8" RUGDG0695
Extra Large: 240x340cm 8'2x11'5" RUGDG0696
Runner: 80x250cm 2'6x8'2" RUGDG0717



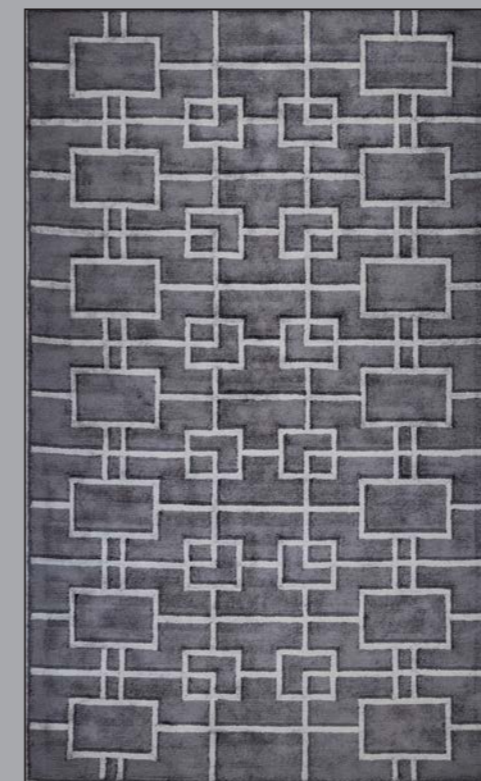
* Bespoke sizing available to order. Please refer to page 76 | Sondermaße können bestellt werden. Weitere Angaben sehen Sie auf Seite 76 | Les tapis sur mesure sont réalisables sur devis. Veuillez vous référer à la page 76 | Para pedidos de medidas personalizadas, por favor consulte pagina 76 | Il su misura e' disponibile, si prega di far riferimento alla pagina 76



Rheinsberg Granite *

Based on our striking Rheinsberg wallpaper, this eye-catching graphic trellis design with its meticulously hand tufted loop pile, brings a textural three-dimensional aspect to your interior setting.

DE Basierend auf unserer markanten Rheinsberg Tapete, bringt dieses auffällige Grafik-Spaliere-Design mit seiner akribisch Hand getufteten Textur, einen strukturellen dreidimensionalen Aspekt in Ihre Inneneinrichtung. **FR** Inspiré de notre remarquable papier peint Rheinsberg, ce design graphique bouclé méticuleusement à la main apporte un aspect texturé en trois dimensions à votre intérieur. **ES** Inspirada en nuestro impactante papel pintado de Rheinsberg, este llamativo diseño enrejado con la pila doblada a mano, aporta una textura tridimensional a cualquier interior. **IT** Tratto dal nostro disegno di carte da parati Rheinsberg questo disegno grafico del traliccio e' tuftato con il pelo arricciato, ha un aspetto tridimensionale per il tuo arredamento.

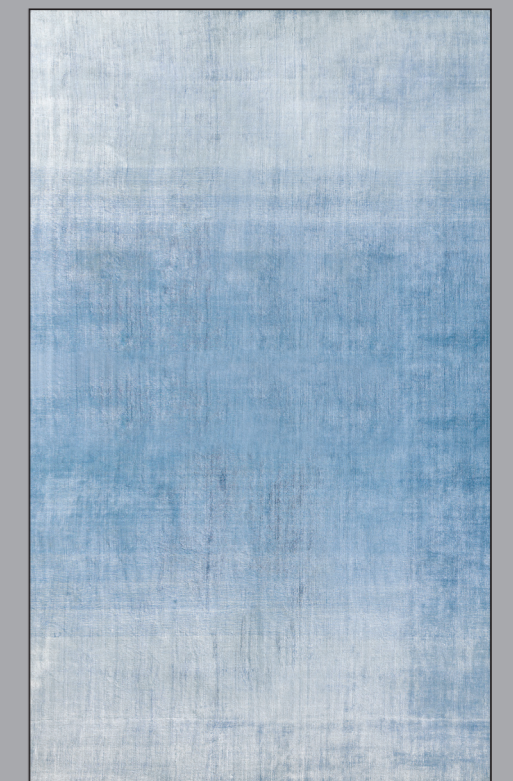


Hand Tufted. Pile 100% Viscose, Backing 100% Cotton.
 Standard: 160x260cm 5'2x8'5" RUGDG0528
 Large: 200x300cm 6'6x9'8" RUGDG0529
 Extra Large: 250x350cm 8'2x11'5" RUGDG0530
 Runner: 75x250cm 2'5x8'2" RUGDG0558

Phipps Sky *

Sumptuous and inviting, silky and iridescent, our hand woven shaded rug gradates through a gentle ombré from palest sky through to a richer azure.

DE Luxuriös und einladend, seidig und schillernd mit sanftem Farbverlauf von einem blassen Sky in ein kräftiges Azure übergehend. **FR** Somptueux et engageant, soyeux et irisé, Phipps fait main propose un dégradé de couleurs. **ES** Suntuosa y tentadora, sedosa e iridescente, nuestra alfombra Phipps tejida a mano, con un degradado de colores. **IT** Suntuoso ed invitante, setoso ed iridescente, il nostro tappeto tessuto a mano passa attraverso un delicato sfumato di colori.



Hand Loom. Pile 100% Viscose, Backing 100% Cotton.
 Standard: 160x260cm 5'2x8'5" DHRDG0056
 Large: 200x300cm 6'6x9'8" DHRDG0057

Dorsoduro Celadon *

Hand knotted in luxurious viscose, this rug brings together a contemporary and sophisticated colour palette in charcoal, teal and lime.

DE Dieser handgeknüpfte Viskose Teppich vereint eine moderne Farbpalette in Grau und Grüntönen. **FR** Noué à la main dans une viscose luxueuse, ce tapis de sol associe une palette de couleurs contemporaine et sophistiquée, charbon, sarcelle et citron vert. **ES** Anudada a mano en lujosa viscosa, esta alfombra combina una paleta de colores contemporánea y sofisticada, en marengo, verde azulado y lima. **IT** Annodato a mano in lussuosa viscosa, questo tappeto da pavimento riunisce una tavolozza di colori contemporanea e sofisticata in grigio antracite, verde petrolio e lime.



Hand knotted. Pile 100% Viscose, Backing 100% Cotton.
Standard: 160x260cm 5'2x8'5" RUGDG0561
Large: 200x300cm 6'6x9'8" RUGDG0562
Extra Large: 250x350cm 8'2x11'5" RUGDG0563

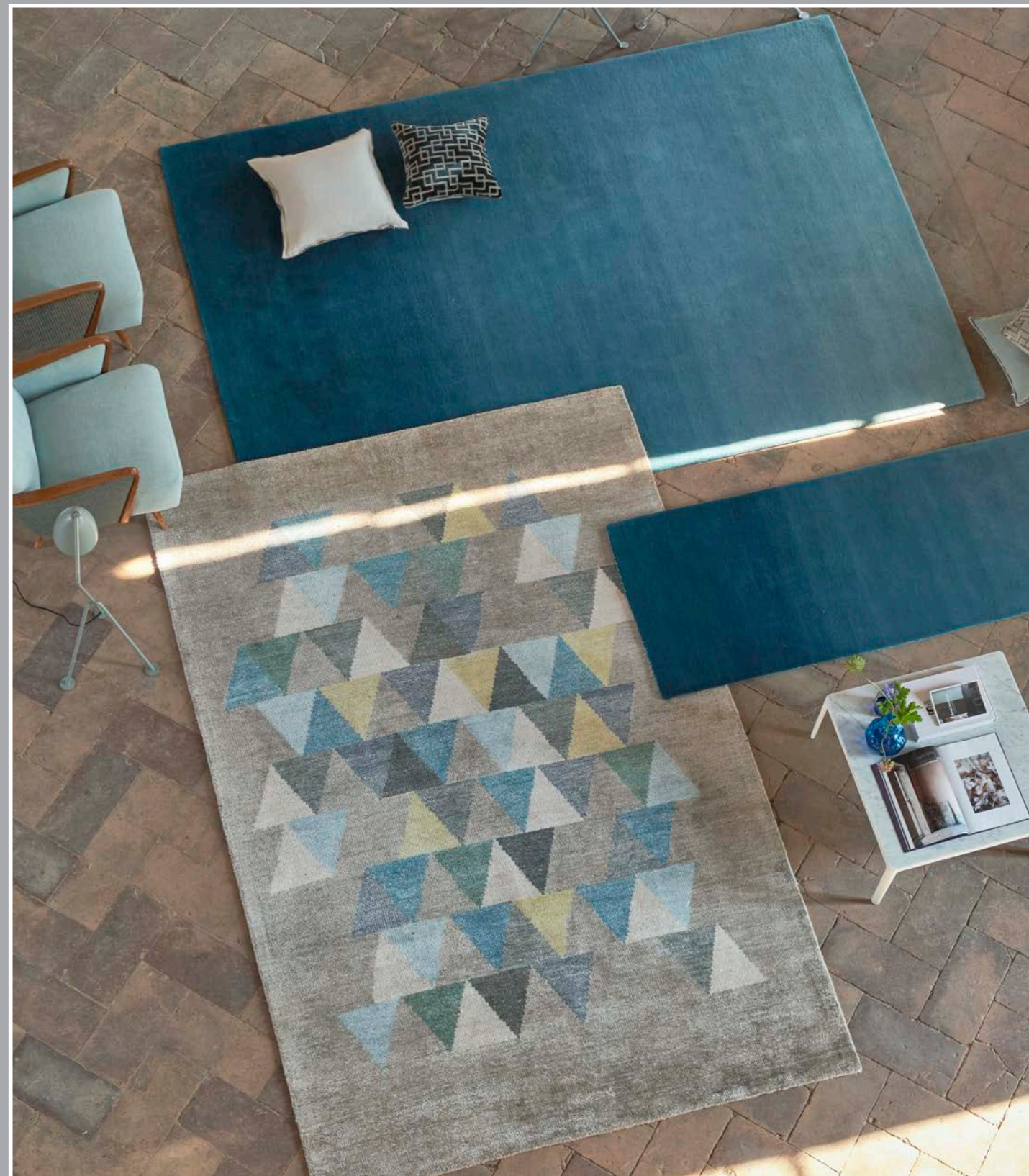
Padua Azure

Skilfully hand tufted in a superior pure wool for improved softness. Wool is a naturally warm and resilient fibre, so this luxury rug is also suitable for more high-traffic areas in your home.

DE Handgetuftet aus Wolle für eine besondere Weichheit. Wolle ist eine natürliche Faser die elastisch und warm ist und sich somit für besonders stark frequentierte Bereiche in Ihrem Zuhause eignet. **FR** Tufté à la main en laine pure, il offre une douceur incroyable. La laine étant une fibre naturellement chaude et résistante, ce tapis convient pour les zones de votre maison à fort passage. **ES** Hábilmente tejida a mano en bucle en lana pura superior para mayor suavidad. La lana es una fibra naturalmente caliente y resistente, así que esta alfombra de lujo es también conveniente para las zonas de mayor tráfico en su hogar. **IT** Taftato a mano con pura lana pregiata per una maggiore morbidezza, gode anche della praticità della lana, essendo questa una fibra naturalmente calda e resiliente, ed è adatto ad aree ad alto passaggio.



Hand Tufted. Pile 100% Wool, Backing 100% Cotton.
Standard: 160x260cm 5'2x8'5" RUGDG0594
Large: 200x300cm 6'6x9'8" RUGDG0595
Extra Large: 250x350cm 8'2x11'5" RUGDG0596
Runner: 75x250cm 2'5x8'2" RUGDG0600



Eberson Cobalt *

A beautiful ombré rug fading through tones of cobalt. Woven on a broadloom and dried in the sun giving an intense lustre to the yarns.

DE Ein wunderschöner Teppich, mit einem Farbverlauf in Kobalttönen. Nahtlos auf breiten Webstühlen gewebt und in der Sonne getrocknet, erhält das Garn einen intensiven Luster. **FR** Un magnifique tapis avec un dégradé de bleu. Ses fils ont un éclat intense grâce au tissage en largeur et au séchage au soleil. **ES** Una preciosa alfombra ombré de colores cobalto en degrade. Tejida y secada al sol lo que le da un intenso brillo. **IT** Un bellissimo tappeto con le sfumature del cobalto. Realizzato a telaio ed asciugato al sole, presenta fili dalla lucentezza intensa.



Hand Loom. Pile 100% Viscose,
Backing 100% Cotton.

Standard: 160x260cm 5'2x8'5" DHR182/02

Large: 200x300cm 6'6x9'8" DHR183/02

Extra Large: 250x350cm 8'2x11'5" RUGDG0323

Saraille Dusk *

Exclusively woven in a Tencel™ Lyocell composition for additional durability and vibrance of colour.

DE Exklusiv aus Tencel™ Lyocell gewebt, das für eine besondere Strapazierfähigkeit und Farbtiefe sorgt. **FR** Exclusivement tissé en Tencel™ Lyocell pour une résistance supplémentaire et des couleurs plus vives. **ES** Exclusivamente tejida en una nueva composición de Tencel™ Lyocell para una durabilidad adicional y un color vibrante. **IT** Esclusivamente tessuto in una nuova composizione Tencel™ Lyocell per una maggiore durevolezza e vivacità del colore.



Hand Loom. Pile 100% Tencel™ Lyocell,
Backing 100% Cotton.

Standard: 160x260cm 5'2x8'5" RUGDG0444

Large: 200x300cm 6'6x9'8" RUGDG0445

Extra Large: 250x350cm 8'2x11'5" RUGDG0446





Ogee Ocean *

Hand tufted from 100% luxurious viscose for a subtle sheen, this stylish rug is also available in a runner option.

DE Handgetuftet aus 100% luxuriöser Viskose für einen eleganten Glanz. Dieser stilvolle Teppich ist auch als Läufer erhältlich. **FR** Ce tapis de sol luxueux se compose de rayures de couleur vives, 100% viscose, il offre une brillance subtile. Egalement disponible en format tapis de couloir. **ES** Tejida a mano en lujosa viscosa 100% para un brillo sutil, esta elegante alfombra también está disponible en una opción para pasillo. **IT** Taftato a mano in lussuosa viscosa 100% per una sottile lucentezza, questo elegante tappeto è disponibile anche in versione passatoia.

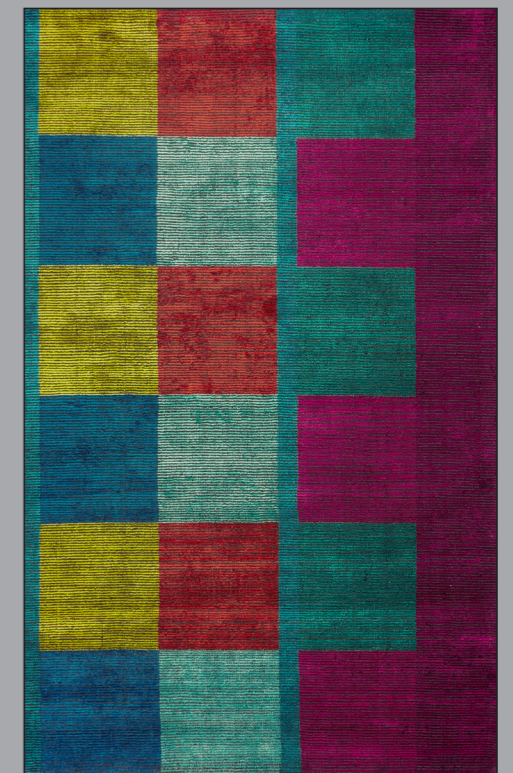


Hand Tufted. Pile 100% Viscose, Backing 100% Cotton.
 Standard: 160x260cm 5'2x8'5" RUGDG0609
 Large: 200x300cm 6'6x9'8" RUGDG0610
 Extra Large: 250x350cm 8'2x11'5" RUGDG0611
 Runner: 75x250cm 2'5x8'2" RUGDG0627

Sarang Fuchsia *

Directly inspired by our stunning velvet geometric check, this statement rug is hand tufted in fine alternating bands of wool and viscose in blocked ribs of colour with a subtle sheen. This designer rug features large scale checks in vivid tones of fuchsia pink, turquoise and lime which are balanced with bright stripes for a modern punch of colour for your floor. Also available in a runner option.

DE Dieser Statement Teppich wurde von unserem atemberaubenden Velour Karo inspiriert und aus feinen Wolle und Viskose Fasern handgetuftet. Auch als Läufer erhältlich. **FR** Directement inspiré de notre superbe velours au damier géométrique, ce tapis tufté à la main est composé de fines rayures alternant laine et viscose. Disponible également en tapis de couloir. **ES** Directamente inspirada en nuestro impresionante estampado geométrico de terciopelo, esta llamativa alfombra está rematada a mano en finas bandas alternas de lana y viscosa, en colores alternos y de un brillo sutil. También disponible en alfombra de pasillo. **IT** Questo tappeto prende ispirazione direttamente dal nostro splendido tessuto a scacchi, ed è taftato a mano in sottili fili di lana e viscosa alternati a costine di colore, con una sottile lucentezza. Disponibile anche in passatoia.



Hand Tufted. Pile 50% Wool, 50% Viscose, Backing 100% Cotton.
 Standard: 160x260cm 5'2x8'5" RUGDG0606
 Large: 200x300cm 6'6x9'8" RUGDG0607
 Extra Large: 250x350cm 8'2x11'5" RUGDG0608
 Runner: 75x250cm 2'5x8'2" RUGDG0625



Capisoli Teal *

This hard wearing rug is hand-woven in a resilient fibre making it suitable for higher traffic areas.

DE Dieser strapazierfähige Teppich ist handgewebt aus einem besonders widerstandsfähigen Garn und somit für besonders beanspruchte Bereiche geeignet. **FR** Tapis très résistant est tissé à la main dans une fibre élastique le rendant particulièrement adapté à un trafic intense. **ES** Esta resistente alfombra está tejida a mano en una fibra elástica por lo que es conveniente para las áreas que más se usan.

IT Questo tappeto resistente è tessuto a mano in una fibra elastica che lo rende adatto per le aree di traffico più elevate.

Eberson Aqua *

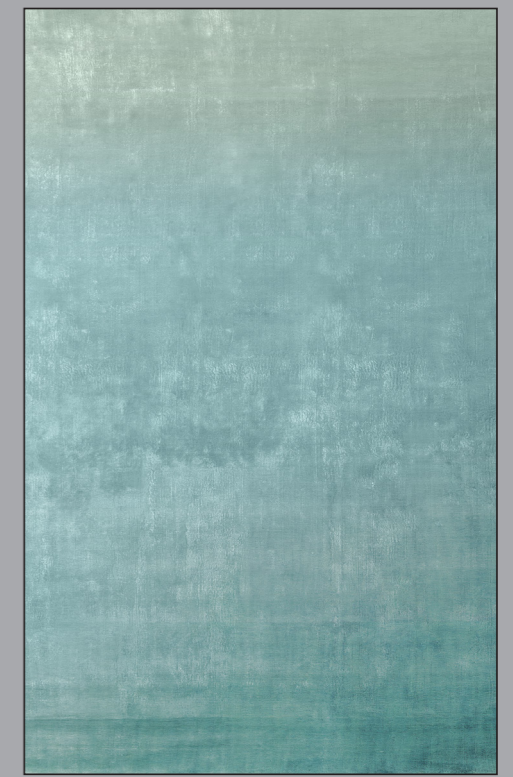
A beautiful ombré rug fading through tones of aqua. Woven on a broadloom and dried in the sun giving an intense lustre to the yarns.

DE Ein wunderschöner ombré Teppich mit verblassenden Wassertönen. Auf einem besonders breiten Webstuhl hergestellt und in der Sonne getrocknet, um dem Garn einen besonderen Glanz zu verleihen. **FR** Un magnifique dégradé dans des tons bleus. Tissé en grande largeur, ce tapis a été séché au soleil ce qui lui confère un brillant exceptionnel.

ES Una preciosa alfombra ombré con degradantes tonos azul agua. Tejida y luego secada al sol lo que le da un intenso brillo a esta alfombra. **IT** Un bellissimo tappeto dalle sfumature color acqua che, essendo tessuto su appositi telai ed asciugato sotto al sole, mostra un effetto particolarmente luminoso.



Hand Loom. Pile 100% Polyester,
Backing 100% Cotton.
Standard: 160x260cm 5'2x8'5" RUGDG0403
Large: 200x300cm 6'6x9'8" RUGDG0404
Extra Large: 250x350cm 8'2x11'5" RUGDG0405



Hand Loom. Pile 100% Viscose,
Backing 100% Cotton.
Standard: 160x260cm 5'2x8'5" DHRDG0009
Large: 200x300cm 6'6x9'8" DHRDG0010
Extra Large: 250x350cm 8'2x11'5" RUGDG0321

Lucian Acacia *

This striped rug is hand woven in fine alternating bands of looped PET and viscose yarns with a subtle sheen in cool aqua, blue and lime. The PET yarn used in this rug is derived from recycled plastic bottles. Also available as a runner option.

DE Dieser gestreifte Teppich mit feinen ineinander fließenden Streifen ist mittels PET-Schlingen und Viscose handgewebt. Er schimmert in dezenten Tönen von Cool Aqua, Blau bis Lime. Das verwendete PET-Garn wird aus recycelten Plastikflaschen gewonnen. **FR** Ce tapis à rayures est tissé main en alternant de fines bandes de fils PET en boucle et de viscose avec une brillance subtile dans des tons aqua, bleu et citron vert. Le fil PET utilisé dans ce tapis est dérivé de bouteilles en plastique recyclées. **ES** Esta alfombra a rayas está tejida a mano en finas bandas alternas de hilos de PET en bucle y viscosa con un suave brillo, en frescos tonos aguamarina, azul y lima. El hilo de PET utilizado en esta alfombra se deriva de botellas de plástico recicladas. **IT** Questo tappeto a strisce è intrecciato a mano in sottili fasce alternate di filati in PET e viscosa con una sottile lucentezza in verde acqua, blu e lime. Il filato PET utilizzato in questo tappeto è derivato da bottiglie di plastica riciclata.



Hand Loom. Pile 65% Viscose, 35% PET.
Backing 100% Cotton.
Standard: 160x260cm 5'2x8'5" RUGDG0646
Large: 200x300cm 6'6x9'8" RUGDG0647
Extra Large: 250x350cm 8'2x11'5" RUGDG0648
Runner: 75x250cm 2'5x8'2" RUGDG0677

Savoie Ocean *

Based on our gorgeous Savoie dip-dye fabric, this subtle ombre design is handwoven in Tencel™ on a traditional broadloom, this rug depicts a gradation of aquatic green and grey.

DE Passend zu unserem großartigen dip-dye gefärbten Stoff Savoie haben wir diesen Teppich im Ombré-Look mit wunderbarem Farbverlauf von Wassergrün bis Grau. Von Hand mit Tencel-Garnen™ auf einem traditionellen Webstuhl angefertigt. **FR** Inspiré par notre magnifique tissu teinté Savoie, ce subtil motif ombré est tissé à la main en Tencel™ sur un support traditionnel, ce tapis représente un dégradé de vert et de gris. **ES** Basada en nuestra tela Savoie, este sutil diseño ombré está tejido a mano en Tencel™ en un telar tradicional, y presenta una gradación de verde acuático y gris. **IT** Basato sul nostro splendido tessuto dip-dye Savoie, questo sottile design ombré è intrecciato a mano in Tencel™ su un tradizionale telaio in una gradazione di verde acqua e grigio.



Hand Loom. Pile 100% Tencel™. Backing 100% Cotton.
Standard: 160x260cm 5'2x8'5" RUGDG0633
Large: 200x300cm 6'6x9'8" RUGDG0634
Extra Large: 250x350cm 8'2x11'5" RUGDG0635





Grandiflora Rose Epice

A rich and dramatic round floral rug featuring a dazzling cluster of expressive painterly flowers bordered with vivid green geranium leaves. Digitally printed onto a dense short polyamide pile, this high-quality rug displays intense detail and colour.

DE Prächtiger, runder Teppich mit ausdrucksvoll handgemaltem Blumenbündel in der Mitte, umrankt von kräftig grünen Geranienblättern als Bordüre. Digitaldruck auf dichtem Polyamid. Großartige Details und kräftige Farben in hochwertiger Qualität. **FR** Un tapis à fleurs de forme ronde spectaculaire, composé d'un bouquet éblouissant de fleurs bordées de feuilles de géranium de ton vert vif. Imprimé numériquement sur un poil court en polyamide, ce tapis de haute qualité dévoile des couleurs riches et intenses. **ES** Una dramática alfombra floral redonda que presenta un deslumbrante grupo de flores bordeadas de vívidas hojas de geranio verde. Estampada sobre una pila corta de poliamida, esta alfombra floral de diseño despliega gran intensidad de color y detalle. **IT** Un tappeto floreale rotondo, ricco e drammatico, che presenta un gruppo di fiori pittorici circondati da foglie di geranio in verde brillante. Stampato in digitale su una densa base di poliammide, questo tappeto di alta qualità mostra dettagli e colori intensi.



Digitally Printed. Pile 100% Polyamide. Backing 100% Felt.
250cm Diameter 8'2" RUGDG0679

Alphonse Ochre *

A stunning geometric rug in a new ochre colourway. Beautifully hand knotted in luxurious pure viscose with a textured pile finish to enhance the softly graded colours.

DE Außergewöhnlicher Teppich mit geometrischem Muster in neuen Ockertönen. Wunderschön aus luxuriöser Viscose handgeknüpft, mit strukturiertem Flor-Finish für einen verbesserten Ombré-Look.

FR Un tapis géométrique magnifique disponible dans un nouveau coloris ocre, noué à la main dans une viscose pure pour une finition luxueuse aux couleurs douces et nuancées. **ES** Una impresionante alfombra geométrica en una nueva tonalidad ocre. Anudada a mano en lujosa viscosa pura con un acabado de pila texturada para realzar los colores suavemente graduados. **IT** Un meraviglioso tappeto geometrico in una nuova colorazione ocre. Splendidamente annodato a mano in lussuosa viscosa con una finitura testurizzata per esaltare i colori sfumati.



Hand Knotted. Pile 100% Viscose.
Backing 100% Cotton.
Standard: 160x260cm 5'2x8'5" RUGDG0630
Large: 200x300cm 6'6x9'8" RUGDG0631
Extra Large: 250x350cm 8'2x11'5" RUGDG0632

Saraille Ochre *

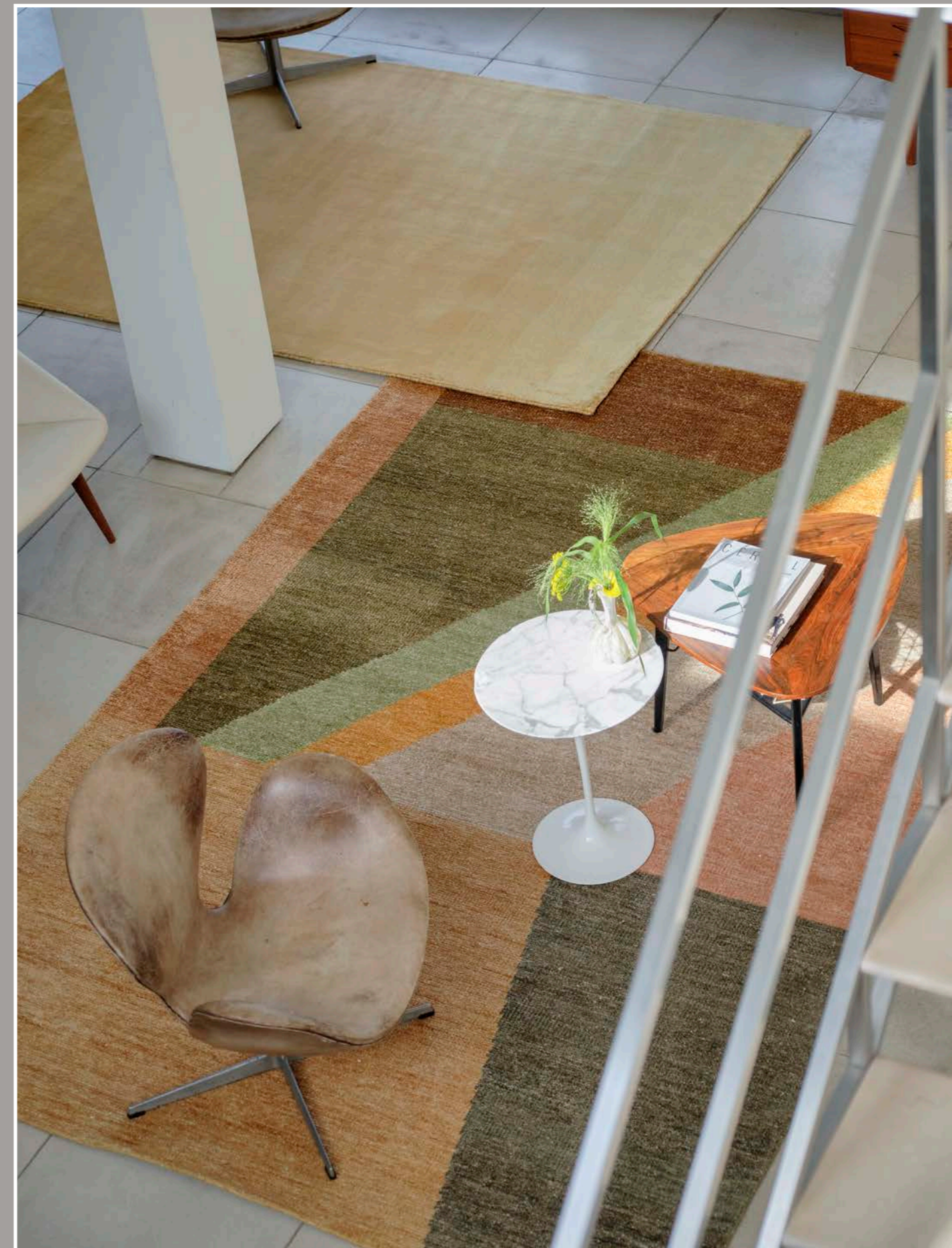
Our beloved Saraille ombre is reimagined in this stunning ochre shaded rug. Exclusively woven in Tencel™ for additional durability and vibrance of colour.

DE Unser beliebtes Saraille-Ombré-Motiv in einem atemberaubenden Farbverlauf aus Ockertönen. Exklusiv aus Tencel™ gewebt für extra Strapazierfähigkeit und Farbbrillanz. **FR** Ce magnifique tapis ombré de couleur ocre s'inspire de notre fameux tissu Saraille. Tissé exclusivement en Tencel™ pour une haute durabilité et des couleurs vives. **ES** Nuestra querida Saraille ombré se reinventa en esta impresionante alfombra en tonos ocre. Tejida exclusivamente en Tencel™ para mayor durabilidad y viveza del color.

IT Il nostro amato Saraille ombré viene reinventato in questo splendido tappeto color ocre. Tessuto esclusivamente in una nuova composizione Tencel™ per una maggiore durabilità e vivacità del colore.



Hand Loom. Pile 100% Tencel™ Lyocell.
Backing 100% Cotton.
Standard: 160x260cm 5'2x8'5" RUGDG0643
Large: 200x300cm 6'6x9'8" RUGDG0644
Extra Large: 250x350cm 8'2x11'5" RUGDG0645



Dahlia Noir Slate

A rich and dramatic large round floral rug featuring exquisitely painted dahlias set against a dark charcoal textural backdrop. Digitally printed onto a hard-wearing dense short polyamide pile.

DE Ein üppiger runder Blumenteppich mit exquisit gemalten Dahlien auf einem dunkel grauen Untergrund, digital auf einen strapazierfähigen Polyamid Flor gedruckt. **FR** Un grand tapis rond floral, riche et spectaculaire, composé de dahlias au ton neutre peints sur un fond texturé intense. Le motif est imprimé numériquement sur un poil court en polyamide. **ES** Una rica y dramática alfombra redonda de flores con dalias exquisitamente pintadas sobre un fondo texturado de carbón oscuro. Impresa digitalmente en densa y resistente pila corta de poliamida. **IT** Un grande tappeto rotondo, con dalie squisitamente dipinte in eleganti toni neutri su uno sfondo scuro color carbone. Stampato digitalmente su un denso tessuto di poliammidi.



Digitally Printed. Pile 100% Polyamide,
Backing 100% Felt.

250cm Diameter 8'2" RUGDG0602

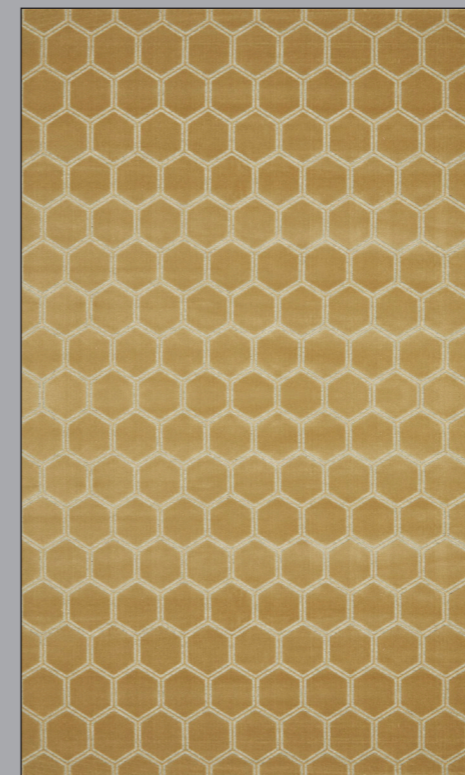




Manipur Hemp

Based on our gorgeous Manipur velvet fabric, this stylish floor rug features perfectly scaled viscose hexagons in a warm hemp tone with a unique woven natural wool ground.

DE Dieser traumhaft schöne Teppich wurde von unserem Manipur Velourstoff inspiriert und zeigt ein gleichmäßiges Sechseck Design in Grün auf einem hellen, gewebten Wolluntergrund. **FR** Basé sur notre magnifique tissu en velour Manipur, ce tapis de sol élégant présente des hexagones de viscose parfaitement mis à l'échelle dans un ton profond de chanvre tissé laine. **ES** Basado en nuestra hermosa tela de terciopelo Manipur, esta elegante alfombra presenta hexágonos de viscosa perfectamente escalados en un cálido tono cáñamo (hemp) con un exclusivo fondo de lana tejida. **IT** Ispirato al nostro splendido velluto Manipur, questo elegante tappeto presenta esagoni di viscosa perfettamente squadrati in una calda tonalità di canapa con un unico tessuto di lana naturale intrecciata.



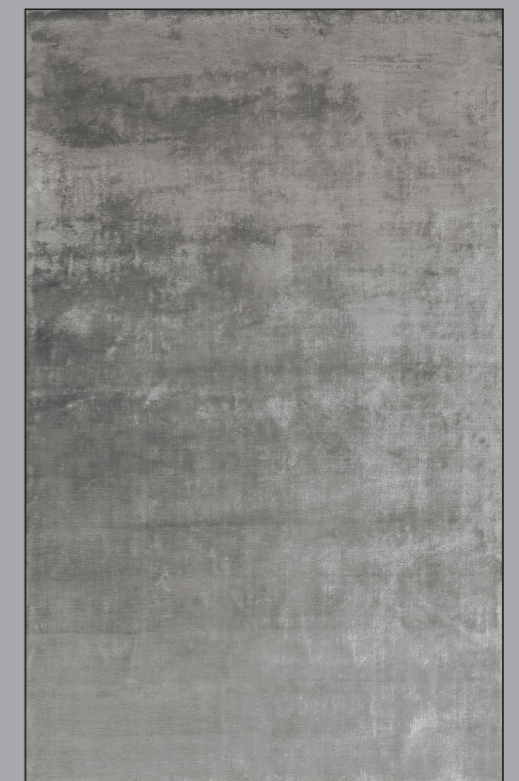
Machine Loom with Cut Pile. Pile 100% Viscose, Base 95% Wool 5% Polyamide.
 Standard: 160x260cm 5'2x8'5" RUGDG0703
 Large: 200x300cm 6'6x9'8" RUGDG0704
 Extra Large: 240x340cm 7'9x11'2" RUGDG0705
 Runner: 80x250cm 2'6x8'2" RUGDG0719

Eberson Slate *

Woven on a broadloom and dried in the sun giving an intense lustre to the yarns.

DE Auf einem besonders breiten Webstuhl hergestellt und in der Sonne getrocknet, um dem Garn einen besonderen Glanz zu verleihen. **FR** Tissé en grande largeur, ce tapis a été séché au soleil ce qui lui confère une brillance exceptionnelle.

ES Tejida y luego secada al sol lo que le da un intenso brillo a esta alfombra. **IT** Tessuto su appositi telai ed asciugato sotto al sole, mostra un effetto particolarmente luminoso.



Hand Loom. Pile 100% Viscose, Backing 100% Cotton.
 Standard: 160x260cm 5'2x8'5" DHRDG0011
 Large: 200x300cm 6'6x9'8" DHRDG0012
 Extra Large: 250x350cm 8'2x11'5" RUGDG0322



Tanchoi Berry *

Hand tufted in a 50% Tencel™ Lyocell 50% viscose blend for exceptional colour and softness, this contemporary rug is a statement piece with a luxurious finish.

DE Hand getuftet in einer 50% Tencel™ Lyocell 50% Viskose Mischung für außergewöhnliche Farben und Weichheit, ist diese zeitgenössische Teppich ein Statement Stück mit einem luxuriösen Finish. **FR** Tufté main dans un mélange 50% viscose 50% Tencel™ Lyocell pour une douceur exceptionnelle. **ES** Hecho a mano en una mezcla al 50% de Tencel™ Lyocell y viscosa que le da un color y una suavidad excepcional, esta alfombra es una pieza con un acabado de lujo. **IT** Tuftato a mano, 50% viscosa e 50% in Tencel™ Lyocell, per un colore e una morbidezza eccezionale, questo tappeto moderno è un capo di tendenza con una finiture di lusso.

Eberson Moss *

A modern, beautiful ombré rug fading through warm earthy tones and moss. Woven in fine viscose on a broadloom and dried in the sun.

DE Ein wunderschöner, moderner Teppich mit Schattierungen von warmen Erdtönen und Moos. Nahtlos in feinsten Viskose gewoben und in der Sonne getrocknet. **FR** Un tapis magnifiquement dégradé dans des tons chauds moss et terre. Réalisé avec une fine viscose sur un grand métier à tisser, ce tapis a séché au soleil. **ES** Una moderna alfombra en cálidos tonos que van de tierra a musgo. Tejida en fina viscoso sobre un paño grueso y suave secado al sol. **IT** Moderno e bellissimo tappeto sfumato con calde tonalità di terra e muschio. Tessuto in viscosa a telaio.



Hand Tufted. Pile 50% Tencel™ Lyocell, 50% Viscose, Backing 100% Cotton.
 Standard: 160x260cm 5'2x8'5" RUGDG0522
 Large: 200x300cm 6'6x9'8" RUGDG0523
 Extra Large: 250x350cm 8'2x11'5" RUGDG0524
 Runner: 75x250cm 2'5x8'2" RUGDG0559

Hand Loom. Pile 100% Viscose, Backing 100% Cotton.
 Standard: 160x260cm 5'2x8'5" RUGDG0546
 Large: 200x300cm 6'6x9'8" RUGDG0547
 Extra Large: 250x350cm 8'2x11'5" RUGDG0548

Saraille Linen *

Our beloved saraille ombré is reimagined in this stunning natural shaded rug. Exclusively woven in a Tencel™ Lyocell composition for additional durability and vibrance of colour.

DE Exklusiv aus einer neuen Tencelzusammensetzung™ gewebt, die für Strapazierfähigkeit und Haltbarkeit der Farbe sorgt. **FR** Exclusivement tissé en Tencel™ Lyocell pour une résistance supplémentaire et des couleurs plus vives. **ES** Exclusivamente tejida en una nueva composición de Tencel™ Lyocell para una durabilidad adicional y un color vibrante. **IT** Esclusivamente tessuto in una nuova composizione Tencel™ Lyocell per una maggiore durevolezza e vivacità del colore.



Hand Loom. Pile 100% Tencel™ Lyocell, Backing 100% Cotton.
Standard: 160x260cm 5'2x8'5" RUGDG0441
Large: 200x300cm 6'6x9'8" RUGDG0442
Extra Large: 250x350cm 8'2x11'5" RUGDG0443

Manipur Dove

This stylish rug features perfectly scaled viscose hexagons in a dove grey tone with a natural wool base. Woven on a specialist jacquard velvet loom in Belgium, with a low dense pile and subtle sheen.

DE Moderner Teppich mit perfekt skalierten Hexagonen in neutralem Taubengrau auf natürlichem Woll-Hintergrund. In Belgien auf speziellen Jacquard Webstühlen angefertigt, mit dichtem und niedrigem Floor um Druckstellen zu minimieren. **FR** Ce tapis élégant représente des hexagones en viscose dans les tons gris dove sur un fond en laine naturelle. Tissé en Belgique avec un poil à faible densité d'une brillance subtile minimisant le marquage. **ES** Esta elegante alfombra presenta hexágonos de viscosa perfectamente escalados en un tono gris paloma con un fondo de lana natural. Tejida en Bélgica, en un telar de terciopelo jacquard especializado, con una pila corta y densa y un brillo sutil que minimiza el marcado. **IT** Questo elegante tappeto presenta esagoni regolari in viscosa in tonalità grigio tortora con una base in lana naturale. Tessuto in Belgio con uno speciale telaio in velluto, con un basso spessore e fibre leggermente lucenti che conferiscono praticità e riducono l'effetto impronta.



Machine Loom with Cut Pile. Pile 100% Viscose, Base 95% Wool 5% Polyamide.
Standard 160x260cm 5'2x8'5" RUGDG0649
Large 200x300cm 6'6x9'8" RUGDG0650
Extra Large 240x340cm 7'9x11'2" RUGDG0651
Runner: 80x250cm 2'6x8'2" RUGDG0721





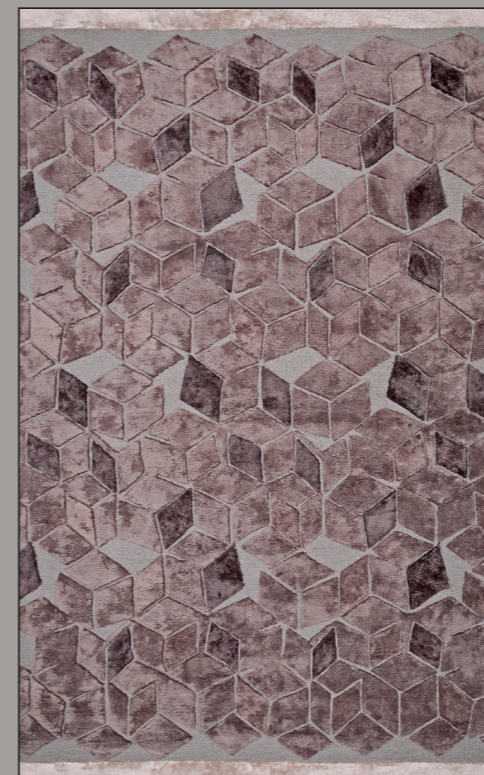
Fitzrovia Espresso *

This elegant geometric rug is created with a hand tufted wool loop background and graphic raised cut pile motifs in viscose. Also available as a runner option.

DE Ein elegantes, geometrisches Teppichdesign aus handgetufteten Wollschlaufen und grafischen Schnittmotiven aus Viskose. Auch als Läufer erhältlich.

FR Cet élégant tapis géométrique est créé avec un fond bouclé en laine tufté à la main. Ce tapis représente des motifs graphiques avec poils surélevés en viscose. Disponible également dans un format tapis de couloir.

ES Esta elegante alfombra geométrica está creada con un fondo de bucle de lana tejido a mano y motivos gráficos de pila cortada en viscosa. También disponible en alfombra de pasillo. **IT** Questo elegante tappeto geometrico è stato creato con uno sfondo in lana taftata a mano e motivi grafici in viscosa. Disponibile anche in versione passatoia.



Hand Tufted. Pile 50% Wool, 50% Viscose, Backing 100% Cotton.

Standard: 160x260cm 5'2x8'5" RUGDG0612

Large: 200x300cm 6'6x9'8" RUGDG0613

Extra Large: 250x350cm 8'2x11'5" RUGDG0614

Runner: 75x250cm 2'5x8'2" RUGDG0628

Sarang Chocolate *

Directly inspired by our stunning velvet geometric check, this statement rug is hand tufted in fine alternating bands of wool and viscose in colour blocked ribs of colour with a subtle sheen. Also available in a runner option.

DE Dieser Statement Teppich wurde von unserem atemberaubenden Velour Karo inspiriert und aus feinen Wolle und Viskose Fasern handgetuftet. Auch als Läufer erhältlich. **FR** Directement inspiré de notre superbe velours au damier géométrique, ce tapis tufté à la main est composé de fines rayures alternant laine et viscose. Disponible également en tapis de couloir.

ES Directamente inspirada en nuestro impresionante estampado geométrico de terciopelo, esta llamativa alfombra está rematada a mano en finas bandas alternas de lana y viscosa, en colores alternos y de un brillo sutil. También disponible en alfombra de pasillo. **IT** Questo tappeto prende ispirazione direttamente dal nostro splendido tessuto a scacchi, ed è taftato a mano in sottili fili di lana e viscosa alternati a costine di colore, con una sottile lucentezza. Disponibile anche in passatoia.



Hand Tufted. Pile 50% Wool, 50% Viscose, Backing 100% Cotton.

Standard: 160x260cm 5'2x8'5" RUGDG0603

Large: 200x300cm 6'6x9'8" RUGDG0604

Extra Large: 250x350cm 8'2x11'5" RUGDG0605

Runner: 75x250cm 2'5x8'2" RUGDG0626

Montmartre Zinc *

Handwoven in Tencel™ Lyocell on a traditional broadloom. The gentle sheen combined with the subtle tones offers your interior beautiful simplicity and texture.

DE Handgewebt auf einem traditionellen Webstuhl in Tencel™ Lyocell. Durch den sanften Glanz und die raffinierten Farben passt dieser Teppich perfekt in jedes Interieur.

FR Tissé à la main en Tencel™ Lyocell sur une grande maille traditionnelle. La brillance douce combinée aux tonalités subtiles offre une simplicité à votre intérieur. **ES** Tejida a mano en Tencel™ Lyocell en un telar tradicional. El ligero lustre combinado con los tonos sutiles aporta a su interior una hermosa simplicidad y textura. **IT** Intrecciato a mano in Tencel™ Lyocell con un telaio largo tradizionale. La delicata lucentezza unita ai toni morbidi offre semplicità e bellezza al tuo spazio interno.



Hand Loom. Pile 100% Tencel™ Lyocell. Backing 100% Cotton.
Standard: 160x260cm 5'2x8'5" RUGDG0567
Large: 200x300cm 6'6x9'8" RUGDG0568
Extra Large: 250x350cm 8'2x11'5" RUGDG0569

Barchessa Slate *

This modern rug is hand tufted in 100% looped viscose with a tip sheared finish. The neutral and grey square and rectangular forms create a bold graphic design.

DE Ein moderner Teppich, handgetuftet aus 100% Viskose. Die neutralen und grauen rechteckigen Muster erzeugen ein mutiges grafisches Design. **FR** Ce tapis de sol moderne est tufté à la main, 100% viscose bouclée avec une finition cisaillée. Les formes neutres et grises carrées et rectangulaires créent un graphisme audacieux. **ES** Esta moderna alfombra está confeccionada a mano en bucle de viscosa 100% con un acabado esquilado. El cuadro neutro y gris y las formas rectangulares crean un diseño atrevido y gráfico. **IT** Questo tappeto moderno in 100% viscosa è taftato a mano con una finitura tagliata in punta. Le forme quadrate e rettangolari neutre e grigie creano un design grafico audace.



Hand Tufted. Pile 100% Viscose. Backing 100% Cotton.
Standard: 160x260cm 5'2x8'5" RUGDG0570
Large: 200x300cm 6'6x9'8" RUGDG0571
Extra Large: 250x350cm 8'2x11'5" RUGDG0572





Alphonse Moss *

Beautifully hand knotted in luxurious pure viscose with a textured pile finish to enhance the softly graded colours.

DE Ein exquisiter, handgetufteter reiner Viskoseteppich mit einer texturierten Oberfläche und sanft abgestuften Farben.

FR Un magnifique tapis géométrique en viscose noué main.

Ce tapis élégant présente des formes graphiques contrastées.

ES Bellamente anudada a mano en lujosa viscosa pura con un acabado de pila texturada para realzar los colores suavemente graduados.

IT Splendidamente annodato a mano in lussuosa viscosa con finitura a trama per esaltare i colori delicati.

Manipur Natural

Based on our gorgeous Manipur velvet fabric, this stylish floor rug features perfectly scaled viscose hexagons in a neutral tone with a unique woven natural wool ground.

DE Dieser traumhaft schöne Teppich wurde von unserem Manipur Velourstoff inspiriert und zeigt ein gleichmäßiges Sechseck Design in einem hellen, gewebten Wolluntergrund.

FR Basé sur notre magnifique tissu en velour Manipur, ce tapis de sol élégant présente des hexagones de viscose parfaitement mis à l'échelle dans des tons neutres tissé laine.

ES Basado en nuestra hermosa tela de terciopelo Manipur, esta elegante alfombra presenta hexágonos de viscosa perfectamente escalados en un tono neutro con un exclusivo fondo de lana tejida.

IT Ispirato sul nostro splendido velluto Manipur, questo elegante tappeto da pavimento presenta esagoni di viscosa perfettamente quadrati in un tono neutro con un unico tessuto in lana naturale intrecciata.



Hand Knotted. Pile 100% Viscose, Backing 100% Cotton.
 Standard: 160x260cm 5'2x8'5" RUGDG0615
 Large: 200x300cm 6'6x9'8" RUGDG0616
 Extra Large: 250x350cm 8'2x11'5" RUGDG0617

Machine Loom with Cut Pile. Pile 100% Viscose, Base 95% Wool 5% Polyamide.
 Standard: 160x260cm 5'2x8'5" RUGDG0706
 Large: 200x300cm 6'6x9'8" RUGDG0707
 Extra Large: 240x340cm 7'9x11'2" RUGDG0708
 Runner: 80x250cm 2'6x8'2" RUGDG0720

Dorsoduro Fresco *

Hand knotted in luxurious viscose, this rug brings together a contemporary and sophisticated colour palette in tuberose pink, moss and dusty mauve.

DE Dieser luxuriöser handgeknüpfte Viskose Teppich vereint eine moderne Farbpalette in Pink und Grüntönen.

FR Noué à la main dans une viscose luxueuse, ce tapis de sol associe une palette de couleurs contemporaine et sophistiquée, rose, mousse et mauve.

ES Anudada a mano en lujosa viscosa, esta alfombra combina una paleta de colores contemporánea y sofisticada, en rosa nardo, musgo y malva.

IT Annodato a mano in lussuosa viscosa, questo tappeto da pavimento riunisce una tavolozza di colori contemporanea e sofisticata in rosa tuberosa, muschio e malva.



Hand Knotted, Pile 100% Viscose, Backing 100% Cotton.

Standard: 160x260cm 5'2x8'5" RUGDG0564

Large: 200x300cm 6'6x9'8" RUGDG0565

Extra Large: 250x350cm 8'2x11'5" RUGDG0566

Padua Natural

Skilfully hand tufted in a superior pure wool for improved softness. Wool is a naturally warm and resilient fibre, so this rug is also suitable for more high-traffic areas in your home.

DE Handgetuftet aus Wolle für eine besondere Weichheit. Wolle ist eine natürliche Faser die elastisch und warm ist sich somit für besonders stark frequentierte Bereiche in Ihrem Zuhause eignet. **FR** Tufté à la main en laine pure, il offre une douceur incroyable. La laine étant une fibre naturellement chaude et résistante, ce tapis convient pour les zones de votre maison à fort passage. **ES** Hábilmente tejida a mano en bucle en lana pura superior para mayor suavidad. La lana es una fibra naturalmente caliente y resistente, así que esta alfombra de lujo es también conveniente para las zonas de mayor tráfico en su hogar. **IT** Taftato a mano con pura lana pregiata per una maggiore morbidezza, gode anche della praticità della lana stessa, essendo questa una fibra naturalmente calda e resiliente, ed è adatto ad aree ad alto passaggio.



Hand Tufted. 100% Wool. Backing 100% Cotton.

Standard: 160x260cm 5'2x8'5" RUGDG0597

Large: 200x300cm 6'6x9'8" RUGDG0598

Extra Large: 250x350cm 8'2x11'5" RUGDG0599

Runner: 75x250cm 2'5x8'2" RUGDG0601

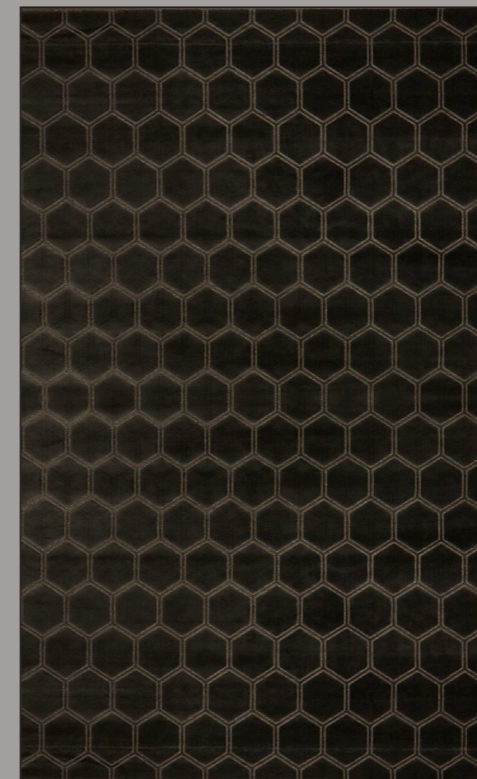




Manipur Espresso

Based on our gorgeous Manipur velvet fabric, this stylish floor rug features perfectly scaled viscose hexagons in a deep chocolate tone with a unique cool woven wool ground.

DE Dieser traumhaft schöne Teppich wurde von unserem Manipur Velourstoff inspiriert und zeigt ein gleichmäßiges Sechseck Design in einem satten Schokobraun auf einem hellen, gewebten Wolluntergrund. **FR** Basé sur notre magnifique tissu en velour Manipur, ce tapis de sol élégant présente des hexagones de viscose parfaitement mis à l'échelle dans un ton profond d'amethyst tissé laine. **ES** Basado en nuestra hermosa tela de terciopelo Manipur, esta elegante alfombra presenta hexágonos de viscosa perfectamente escalados en un tono chocolate profundo con un exclusivo fondo de lana tejida. **IT** Ispirato al nostro splendido velluto Manipur, questo elegante tappeto presenta esagoni di viscosa perfettamente squadriati in una tonalità di cioccolato intenso con un esclusivo fondo in lana intrecciata.



Machine Loom with Cut Pile. Pile 100% Viscose, Base 95% Wool 5% Polyamide.
 Standard: 160x260cm 5'2x8'5" RUGDG0697
 Large: 200x300cm 6'6x9'8" RUGDG0698
 Extra Large: 240x340cm 7'9x11'2" RUGDG0699
 Runner: 80x250cm 2'6x8'2" RUGDG0718

Roxburgh Linen *

Add a smart accent of tailored luxury to your interior space with this modern geometric rug.

DE Verleihen Sie Ihrer Einrichtung einen schicken, luxuriösen Akzent, mit diesem geometrischen Teppich. **FR** Ajoutez du luxe à votre intérieur avec ce tapis moderne et géométrique. **ES** Añade un punto elegante y lujoso a sus interiores con esta moderna alfombra geométrica. **IT** Aggiungete un tocco elegante e di lusso su misura al vostro spazio interno con questo tappeto geometrico moderno.

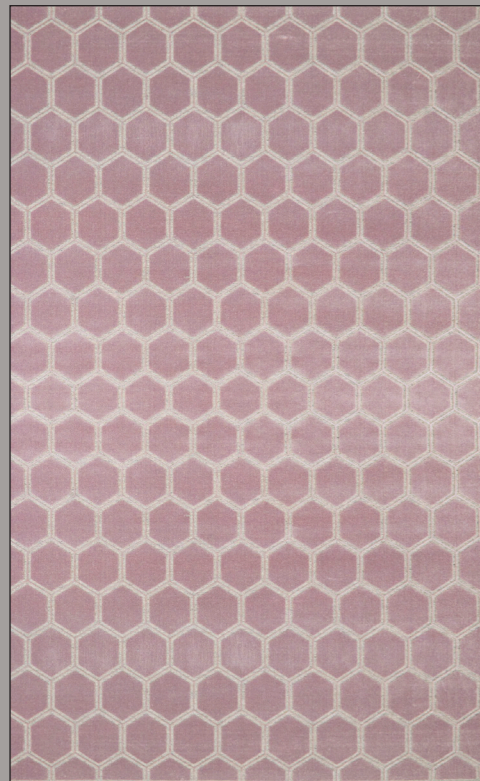


Hand Tufted. Pile 100% Viscose, Backing 100% Cotton.
 Standard: 160x260cm 5'2x8'5" RUGDG0417
 Large: 200x300cm 6'6x9'8" RUGDG0418
 Extra Large: 250x350cm 8'2x11'5" RUGDG0419

Manipur Amethyst

Based on our gorgeous Manipur velvet fabric, this stylish floor rug features perfectly scaled viscose hexagons in a soothing amethyst tone with a unique woven natural wool ground.

DE Dieser traumhaft schöne Teppich wurde von unserem Manipur Velourstoff inspiriert und zeigt ein gleichmäßiges Sechseck Design in einem aufregenden Amethystton auf einem hellen, gewebten Wolluntergrund. **FR** Basé sur notre magnifique tissu en velour Manipur, ce tapis de sol élégant présente des hexagones de viscose parfaitement mis à l'échelle dans un ton profond d'amethyst tissé laine. **ES** Basado en nuestra hermosa tela de terciopelo Manipur, esta elegante alfombra presenta hexágonos de viscosa perfectamente escalados en un placentero tono amatista con un exclusivo fondo de lana tejida. **IT** Ispirato al nostro splendido velluto Manipur, questo elegante tappeto presenta esagoni in viscosa perfettamente quadrati in un piacevole tono ametista con un tessuto in lana naturale intrecciata.



Machine Loom with Cut Pile. Pile 100% Viscose, Base 95% Wool 5% Polyamide.
Standard: 160x260cm 5'2x8'5" RUGDG0700
Large: 200x300cm 6'6x9'8" RUGDG0701
Extra Large: 240x340cm 7'9x11'2" RUGDG0702
Runner: 80x250cm 2'6x8'2" RUGDG0716

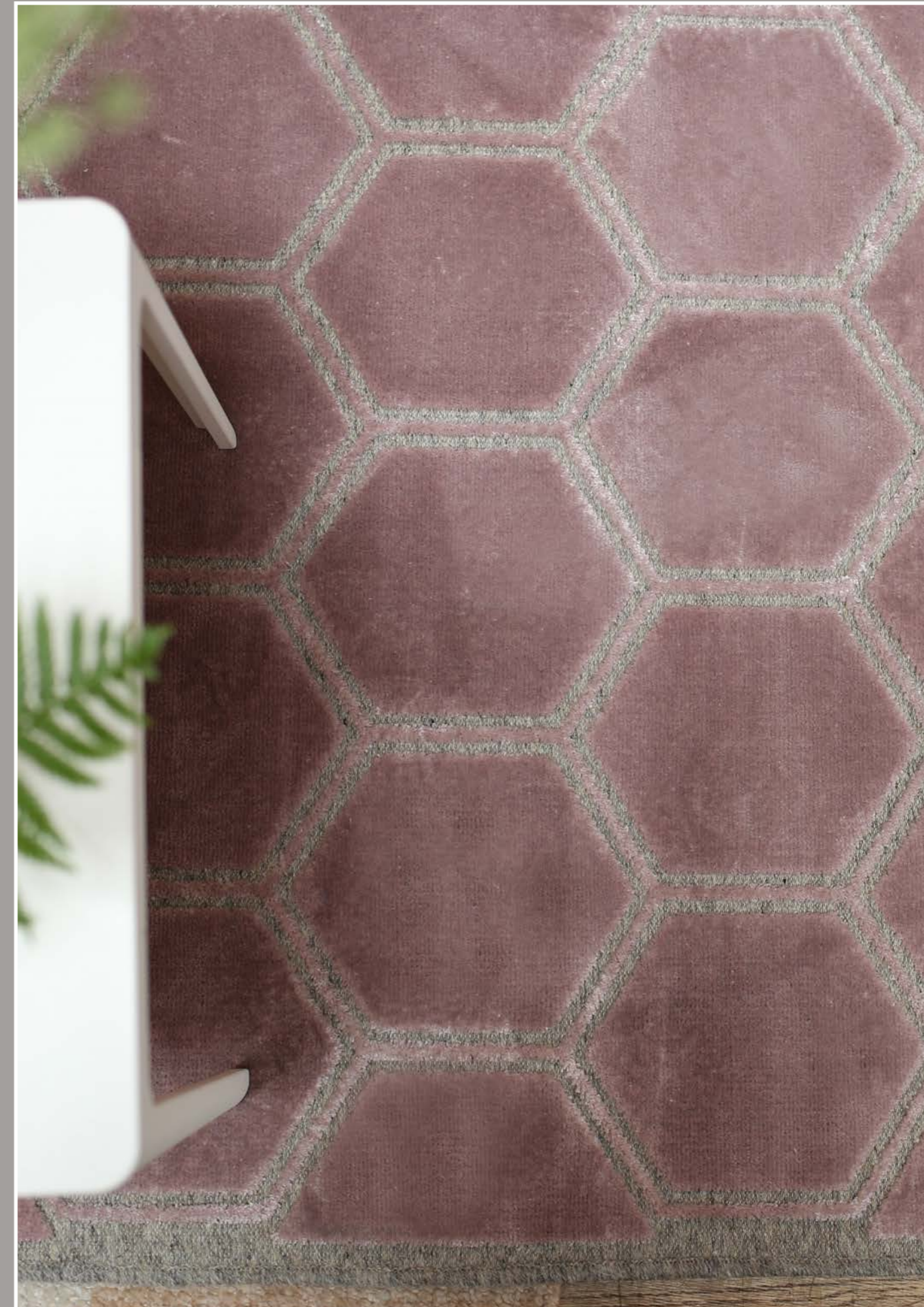
Caretti Linen *

A luxurious hand knotted bamboo viscose rug with a soft sheen and neutral variation from the wonderful natural fibres.

DE Ein luxuriöser handgeknüpfter Bambus-Teppich mit einem feinen Glanz in Variationen von wundervollen neutralen Fasern. **FR** Un luxueux tapis de bambou noué à la main légèrement lustré et dont la douce variation provient des magnifiques fibres naturelles utilisées. **ES** Una lujosa alfombra de bambú anudada a mano con el suave brillo y diferencias tonales de maravillosas fibras naturales. **IT** Un lussuoso tappeto bamboo con una morbida lucentezza e una variazione neutra delle meravigliose fibre naturali.



Hand Knotted. Pile 100% Bamboo Viscose, Backing 100% Cotton.
Standard 160x260cm 5'2x8'5" RUGDG0095
Large 200x300cm 6'6x9'8" RUGDG0096
Extra Large 250x350cm 8'2x11'5" RUGDG0556





Eberson Mink *

A modern, beautiful ombré rug fading through neutral tones and mink. Woven in fine viscose on a broadloom and dried in the sun, which gives the yarns of this luxurious rug an intense and unique lustre and velvety sheen to emulate the appearance of a silk rug.

DE Ein moderner, wunderschöner Ombré-Teppich im Farbverlauf softer Naturtöne und dunklem Nerzbraun. Einzigartige Leuchtkraft und samtiger Glanz dank feiner Viscose, die auf traditionellen breiten Webstühlen verarbeitet und im Sonnenlicht getrocknet wird. **FR** Un tapis ombré moderne de couleur neutre et taupe. Tissé dans une viscose raffinée et séché au soleil, ce procédé confère aux fils un effet lustré intense et unique. **ES** Una moderna alfombra ombré que se gradúa en suaves tonos neutros y visón. Tejida en viscosa fina sobre un telar ancho y secada al sol, que otorga a esta lujosa alfombra un brillo intenso y único y un lustre aterciopelado, para emular la apariencia de una alfombra de seda. **IT** Un tappeto ombré moderno, che sfuma dai toni neutri tenui al visone. Tessuto a telaio in viscosa fine e asciugato al sole, presenta una lucentezza intensa e unica e una finitura vellutata.

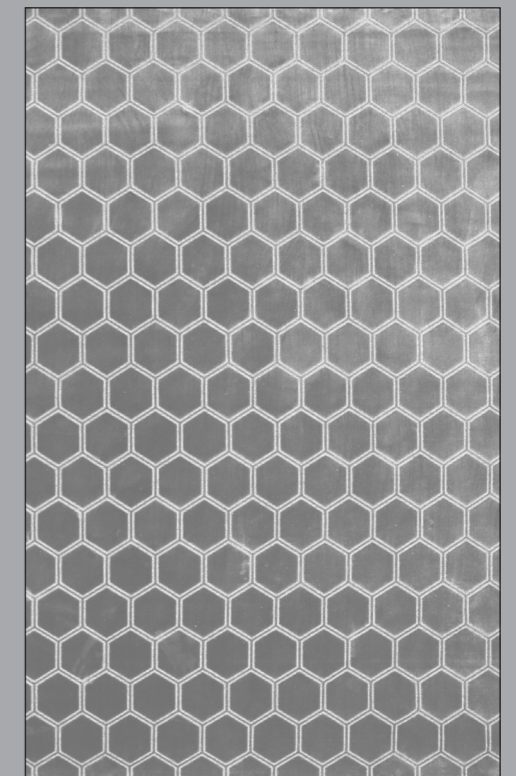


Hand Loom. Pile 100% Viscose. Backing 100% Cotton.
 Standard: 160x260cm 5'2x8'5" RUGDG0640
 Large: 200x300cm 6'6x9'8" RUGDG0641
 Extra Large: 250x350cm 8'2x11'5" RUGDG0642

Manipur Silver

This stylish rug features perfectly scaled viscose hexagons in a neutral silver tone with a natural wool base. Woven on a specialist jacquard velvet loom in Belgium, with a low dense pile and subtle sheen.

DE Moderner Teppich mit perfekt skalierten Hexagonen in neutralem Silberton auf natürlichem Woll-Hintergrund. In Belgien auf speziellen Jacquard Webstühlen angefertigt, mit dichtem und niedrigem Floor um Druckstellen zu minimieren. **FR** Ce tapis élégant représente des hexagones en viscose dans les tons argentés sur un fond en laine naturelle. Tissé en Belgique avec un poil à faible densité d'une brillance subtile minimisant le marquage. **ES** Esta elegante alfombra presenta hexágonos de viscosa perfectamente escalados en un tono plateado neutro con un fondo de lana natural. Tejida en Bélgica, en un telar de terciopelo jacquard especializado, con una pila corta y densa y un brillo sutil que minimiza el marcado. **IT** Questo elegante tappeto presenta esagoni regolari in viscosa in una tonalità argento con una base in lana naturale. Tessuto in Belgio con uno speciale telaio in velluto, con un basso spessore e fibre leggermente lucenti che conferiscono praticità e riducono l'effetto impronta.



Machine Loom with Cut Pile. Pile 100% Viscose, Base 95% Wool 5% Polyamide.
 Standard: 160x260cm 5'2x8'5" RUGDG0652
 Large: 200x300cm 6'6x9'8" RUGDG0667
 Extra Large: 240x340cm 7'9x11'2" RUGDG0668
 Runner: 80x250cm 2'6x8'2" RUGDG0722

Eberson Tuberose *

A modern, beautiful ombré rug fading through soft pink tones and tuberose. Woven in fine viscose on a broadloom and dried in the sun, which gives the yarns of this luxurious contemporary rug an intense and unique lustre and velvety sheen.

DE Ein moderner, wunderschöner Ombré-Teppich im Farbverlauf softer Pinktöne und Tuberose. Einzigartige Leuchtkraft und samtiger Glanz dank feiner Viscose, die auf traditionellen breiten Webstühlen verarbeitet und im Sonnenlicht getrocknet wird. **FR** Un tapis ombré moderne de couleur rose délicate et de tubéreuse. Tissé dans une viscose raffinée et séché au soleil, ce procédé confère aux fils un effet lustré intense et unique. **ES** Una moderna alfombra ombré que se gradúa en suaves rosas y tonos de flor de nardo. Tejida en viscosa fina sobre un telar ancho y secada al sol, que otorga a esta lujosa alfombra un brillo intenso y único y un lustre aterciopelado. **IT** Un tappeto ombré moderno, che sfuma dai toni rosa tenui al tuberosa. Tessuto a telaio in viscosa fine e asciugato al sole, presenta una lucentezza intensa e unica e una finitura vellutata.



Hand Loom. Pile 100% Viscose. Backing 100% Cotton.
Standard: 160x260cm 5'2x8'5" RUGDG0636
Large: 200x300cm 6'6x9'8" RUGDG0637
Extra Large: 250x350cm 8'2x11'5" RUGDG0639

Capisoli Granite *

Derived from the subtle ombré of our Designers Guild Capisoli weave, this hard wearing rug is hand-woven in a resilient fibre making it suitable for higher traffic areas.

DE Inspiriert von unserem leicht changierenden Capisoli Design, empfiehlt sich dieser widerstandsfähige, handgewebte Teppich aus resistenten Fasern für stark frequentierte Bereiche. **FR** Dérivé notre collection de tissu tissés Capisoli, ce tapis, particulièrement résistant est tissé à la main dans une fibre résistante, ce qui le rend idéal pour les zones à fort passage. **ES** Inspirada en el sutil ombré de nuestra tela Capisoli, esta resistente alfombra está tejida a mano en una fibra resistente que la hace adecuada para áreas de mayor tráfico. **IT** Derivato dalle ombre sottili del nostro disegno Capisoli, questo tappeto resistente è tessuto a mano in una fibra resistente.



Hand Loom. Pile 100% Polyester, Backing 100% Cotton.
Standard: 160x260cm 5'2x8'5" RUGDG0549
Large: 200x300cm 6'6x9'8" RUGDG0550
Extra Large: 250x350cm 8'2x11'5" RUGDG0551



Peonia Grande Zinc

Digitally printed onto a dense short polyamide pile, this quality rug displays intense detail and colour.

DE Dieses einzigartige Design wurde digital auf einen hochwertigen Polyamid Grund gedruckt. **FR** Imprimé numériquement sur un poil court de polyamide dense, ce tapis de qualité affiche des détails uniques et des couleurs intenses. **ES** Estampada digitalmente sobre una densa pila de poliamida, esta alfombra de calidad presenta un intenso colorido y detalle. **IT** Stampato digitalmente su un denso spessore di poliammide, questo tappeto di qualità mostra dettagli e colori intensi.



Digitally Printed. Pile 100% Polyamide, Backing 100% Felt.
250cm Diameter 8'2" RUGDG0593





Kappazuri Zinc *

A graphic statement rug in tones of stylish grey, hand knotted in luxurious viscose.

DE Ein handgetufteter Viskoseteppich in stilvollen Grautönen und grafischem Design. **FR** Tapis graphique en viscose noué main. **ES** Alfombra de impacto gráfico en tonos de elegante gris, anudada a mano en lujosa viscosa. **IT** Un tappeto dal design grafico in toni di grigio, annodato a mano in lussuosa viscosa.



Hand Knotted. Pile 100% Viscose, Backing 100% Cotton.
 Standard: 160x260cm 5'2x8'5" RUGDG0618
 Large: 200x300cm 6'6x9'8" RUGDG0619
 Extra Large: 250x350cm 8'2x11'5" RUGDG0620

Impasto Celadon

Printed on 100% hand loom woven viscose; blues, greys and dashes of charcoal make a spontaneous, artistic colour combination.

DE Gedruckt auf 100% handgewebter Viskose, sorgen Blau, Grau und dezente Charcoal Elemente für eine kreative Farbkombination. **FR** Imprimé sur une matière 100% viscose et tissée à la main. Une combinaison originale et artistique aux tons bleu, gris et charbon. **ES** Impreso en 100% viscosa tejida a mano; su tonos azules y grises crean una combinación de colores espontánea y artística. **IT** Stampato su tessuto a maglia 100%, tessuto viscoso; blu, grigi e strisce di carbone fanno una combinazione di colori spontanea e artistica.

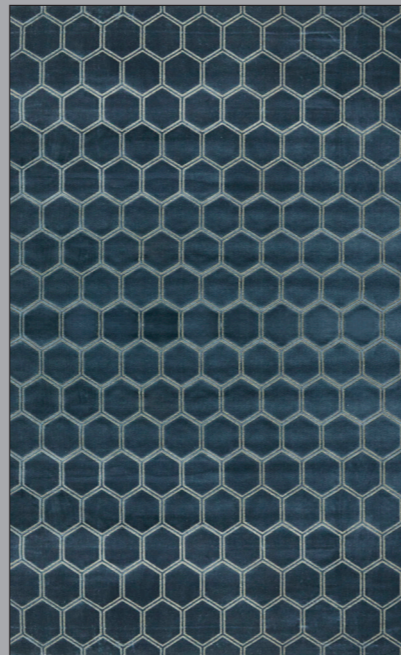


Screen Printed Hand Loom Pile 100% Viscose, Backing 100% Cotton.
 Standard: 160x260cm 5'2x8'5" RUGDG0495
 Large: 200x300cm 6'6x9'8" RUGDG0496
 Extra Large: 250x350cm 8'2x11'5" RUGDG0497

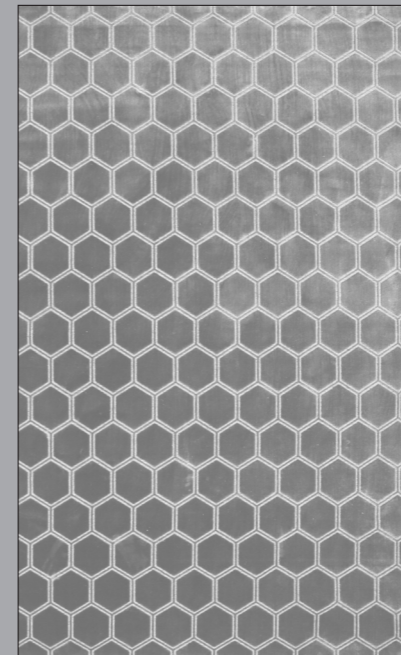
manipur rugs

With an extensive colour palette, our Manipur rug and runner range offers a plainer look for your interior scheme without compromising on style.

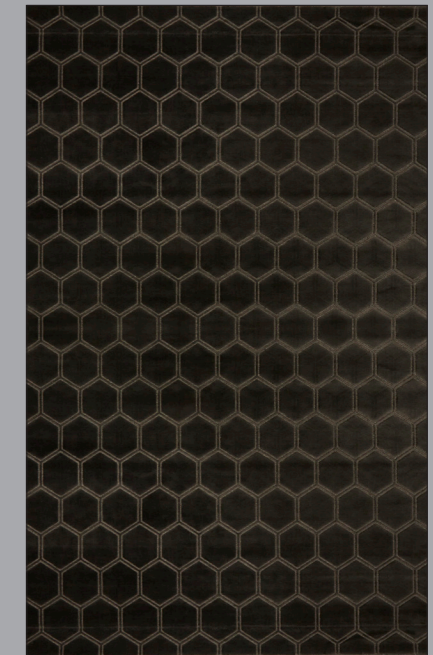
Based on our gorgeous Manipur velvet featuring perfectly scaled hexagons on a natural base - these rugs and runners are woven on specialist jacquard looms in Belgium with a viscose low dense pile and wool ground.



Manipur Delft
 Standard: 160x260cm 5'2x8'5" RUGDG0694
 Large: 200x300cm 6'6x9'8" RUGDG0695
 Extra Large: 240x340cm 8'2x11'5" RUGDG0696
 Runner: 80x250cm 2'6x8'2" RUGDG0717
 see page 4



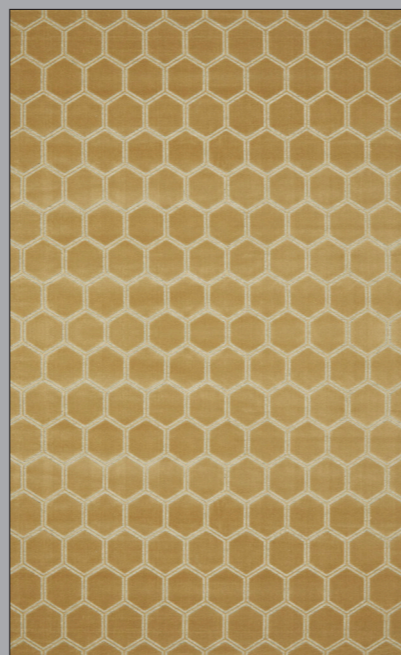
Manipur Silver
 Standard: 160x260cm 5'2x8'5" RUGDG0652
 Large: 200x300cm 6'6x9'8" RUGDG0667
 Extra Large: 240x340cm 8'2x11'5" RUGDG0668
 Runner: 80x250cm 2'6x8'2" RUGDG0722
 see page 4



Manipur Espresso
 Standard: 160x260cm 5'2x8'5" RUGDG0697
 Large: 200x300cm 6'6x9'8" RUGDG0698
 Extra Large: 240x340cm 8'2x11'5" RUGDG0699
 Runner: 80x250cm 2'6x8'2" RUGDG0718
 see page 38



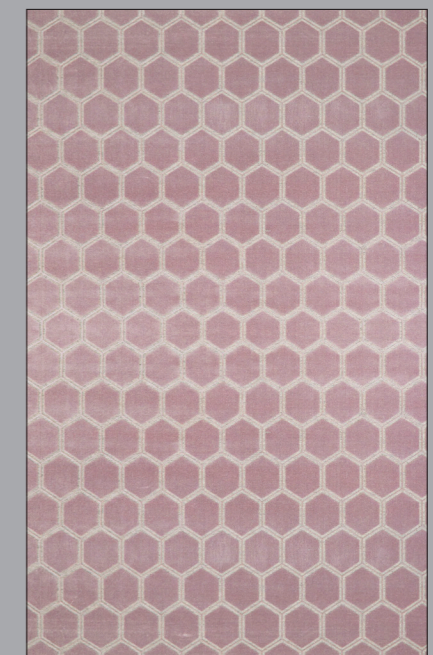
Manipur Natural
 Standard: 160x260cm 5'2x8'5" RUGDG0706
 Large: 200x300cm 6'6x9'8" RUGDG0707
 Extra Large: 240x340cm 8'2x11'5" RUGDG0708
 Runner: 80x250cm 2'6x8'2" RUGDG0720
 see page 34



Manipur Hemp
 Standard: 160x260cm 5'2x8'5" RUGDG0703
 Large: 200x300cm 6'6x9'8" RUGDG0704
 Extra Large: 240x340cm 8'2x11'5" RUGDG0705
 Runner: 80x250cm 2'6x8'2" RUGDG0719
 see page 24



Manipur Dove
 Standard: 160x260cm 5'2x8'5" RUGDG0649
 Large: 200x300cm 6'6x9'8" RUGDG0650
 Extra Large: 240x340cm 8'2x11'5" RUGDG0651
 Runner: 80x250cm 2'6x8'2" RUGDG0721
 see page 28



Manipur Amethyst
 Standard: 160x260cm 5'2x8'5" RUGDG0700
 Large: 200x300cm 6'6x9'8" RUGDG0701
 Extra Large: 240x340cm 8'2x11'5" RUGDG0702
 Runner: 80x250cm 2'6x8'2" RUGDG0716
 see page 40

runners

The ultimate shape for hallways, landings and bedrooms

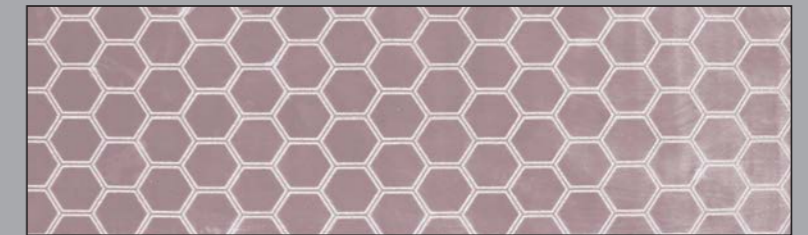
Manipur

Based on our gorgeous Manipur velvet fabric, this stylish runner rug features perfectly scaled viscose hexagons with a unique woven natural wool ground. Woven on a specialist jacquard velvet loom in Belgium, this stylish rug makes a contemporary statement in your interior scheme.

- DE** Dieser traumhaft schöne Teppich wurde von unserem Manipur Velourstoff inspiriert und zeigt ein gleichmäßiges Sechseck Design in einem hellen, gewebten Wolluntergrund. Dieser besondere Teppich wurde auf einem speziellen Jacquard Webstuhl in Belgien gewebt. Mit diesem Teppich setzen Sie ein modernes Statement in Ihrem Interieur.
- FR** Basé sur notre magnifique tissu en velour Manipur, ce tapis de sol élégant présente des hexagones de viscose parfaitement mis à l'échelle dans un ton profond de tissé laine. Tissé sur un métier à tisser en velours jacquard spécialisé en Belgique, ce tapis élégant fait une déclaration contemporaine dans votre décoration d'intérieur.
- ES** Basado en nuestra hermosa tela de terciopelo Manipur, esta elegante alfombra presenta hexágonos de viscosa perfectamente escalados en un exclusivo fondo de lana tejida. Tejida en un telar especializado en terciopelo jacquard en Bélgica, esta elegante alfombra hace una declaración contemporánea en su esquema interior.
- IT** Ispirato al nostro splendido tessuto iManipur, questo elegante runner presenta esagoni in viscosa perfettamente scalati in lana intrecciata unica nel suo genere. Tessuto su uno speciale telaio in velluto jacquard in Belgio, questo elegante tappeto dà un tocco contemporaneo nel tuo interno.



Machine Loom with Cut Pile.
Pile 100% Viscose, Base 95% Wool 5% Polyamide.



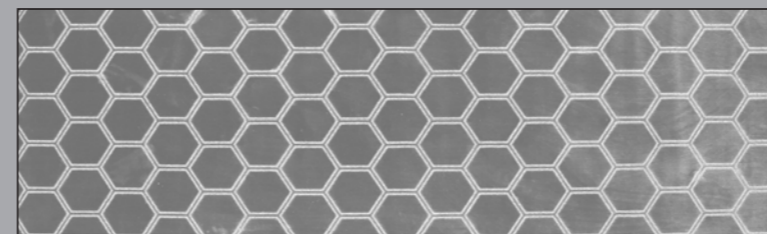
Manipur Amethyst
80x250cm 2'6x8'2" RUGDG0716



Manipur Espresso
80x250cm 2'6x8'2" RUGDG0718



Manipur Dove
80x250cm 2'6x8'2" RUGDG0721



Manipur Silver
80x250cm 2'6x8'2" RUGDG0722



Manipur Hemp
80x250cm 2'6x8'2" RUGDG0719



Manipur Delft
80x250cm 2'6x8'2" RUGDG0717



Manipur Natural
80x250cm 2'6x8'2" RUGDG0720

Lucian Acacia

This striped runner is hand woven in fine alternating bands of looped PET and viscose yarns with a subtle sheen in cool aqua, blue and lime. The PET yarn used in this runner is derived from recycled plastic bottles.

DE Dieser gestreifte Teppichläufer mit feinen ineinander fließenden Streifen ist mittels PET-Schlingen und Viscose handgewebt. Er schimmert in dezenten Tönen von Cool Aqua, Blau bis Lime. Das verwendete PET-Garn wird aus recycelten Plastikflaschen gewonnen. **FR** Ce tapis de couloir à rayures est tissé main en alternant de fines bandes de fils PET en boucle et de viscose avec une brillance subtile dans des tons aqua, bleu et citron vert. Le fil PET utilisé dans ce tapis est dérivé de bouteilles en plastique recyclées. **ES** Esta alfombra de pasillo a rayas está tejida a mano en finas bandas alternas de hilos de PET en bucle y viscosa, con un suave brillo, en frescos tonos aguamarina, azul y lima. El hilo de PET utilizado en esta alfombra de pasillo se deriva de botellas de plástico recicladas. **IT** Questa passatoia a strisce è intrecciata a mano in sottili fasce alternate di filati in PET e viscosa con una sottile lucentezza in verde acqua, blu e lime. Il filato PET utilizzato in questo tappeto è derivato da bottiglie di plastica riciclata.

Ogee Ocean

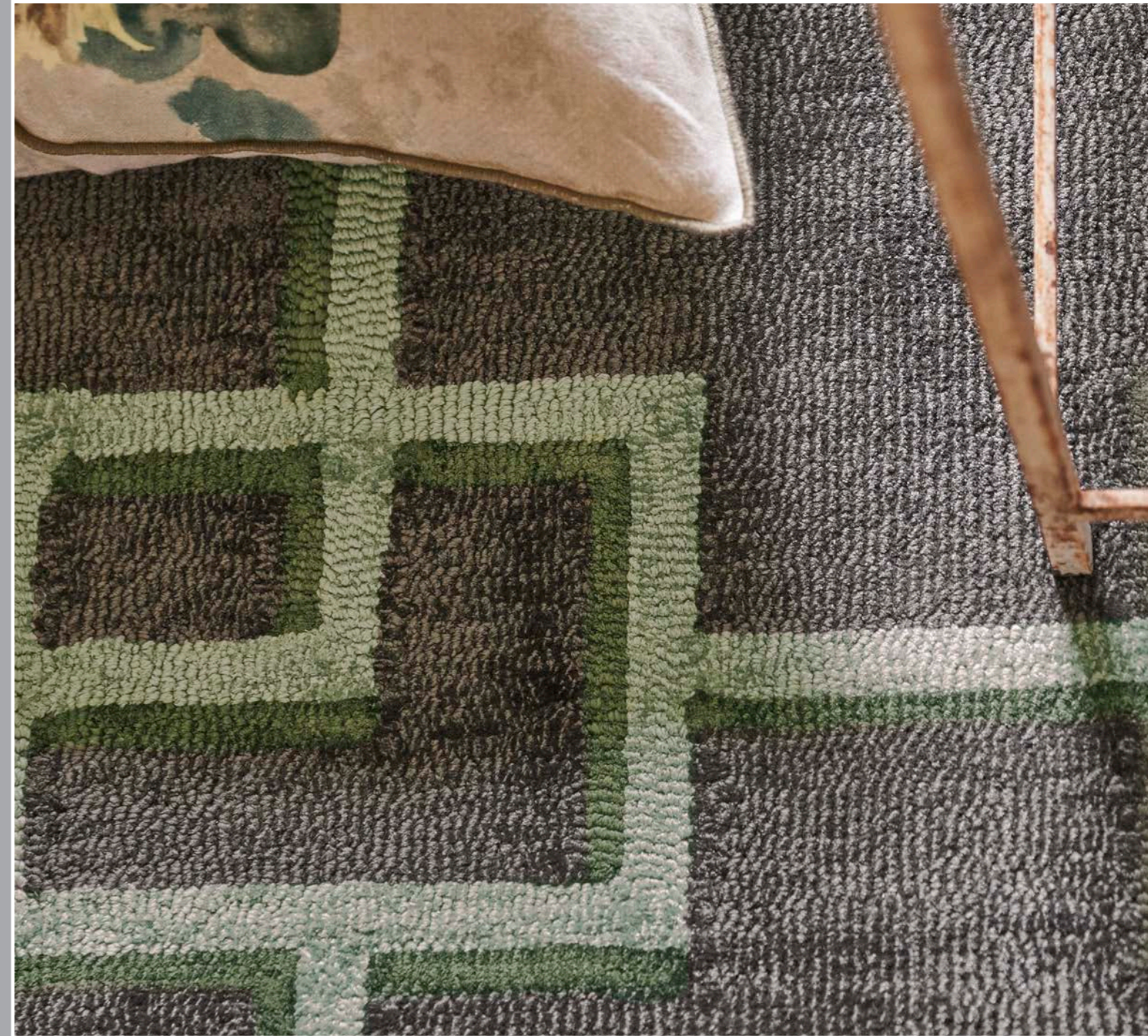
Hand tufted from 100% luxurious viscose for a subtle sheen.

DE Handgetuftet aus 100% luxuriöser Viskose für einen eleganten Glanz. **FR** Tufté à la main en 100% viscose, ce tapis offre une brillance subtile. **ES** Tejida a mano en lujosa viscosa 100% para un brillo sutil. **IT** Taftato a mano in lussuosa viscosa 100% per una sottile lucentezza.

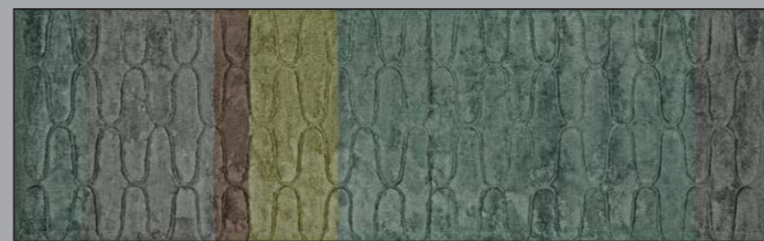
Rheinsberg Sage

This eye-catching graphic trellis design with its meticulously hand tufted loop pile, brings a textural three-dimensional aspect to your interior setting.

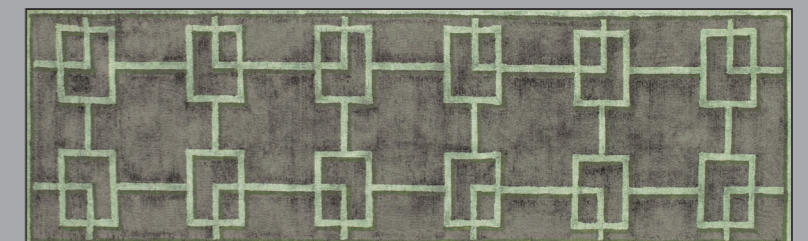
DE Dieses auffällige Grafik-Spalier-Design mit seiner akribisch Hand getufteten Textur bringt einen strukturellen dreidimensionalen Aspekt in Ihre Inneneinrichtung. **FR** Ce design graphique bouclé méticuleusement à la main apporte un aspect texturé en trois dimensions à votre intérieur. **ES** Este llamativo diseño enrejado con la pila doblada a mano, aporta una textura tridimensional a cualquier interior. **IT** Questo disegno grafico del traliccio è tuftato con il pelo arricciato, ha un aspetto tridimensionale per il tuo arredamento.



Lucian Acacia
Hand Loom. Pile 65% Viscose, 35% PET, Backing 100% Cotton.
75x250cm 2'5x8'2" RUGDG0677



Ogee Ocean
Hand Tufted. Pile 100% Viscose, Backing 100% Cotton.
75x250cm 2'5x8'2" RUGDG0627



Rheinsberg Sage
Hand Tufted. Pile 100% Viscose, Backing 100% Cotton.
75x250cm 2'5x8'2" RUGDG0557



Rheinsberg Granite

This eye-catching graphic trellis design with its meticulously hand tufted loop pile, brings a textural three-dimensional aspect to your interior setting.

DE Dieses auffällige Grafik-Spalier-Design mit seiner akribisch Hand getufteten Textur bringt einen strukturellen dreidimensionalen Aspekt in Ihre Inneneinrichtung.

FR Ce design graphique bouclé méticuleusement à la main apporte un aspect texturé en trois dimensions à votre intérieur. **ES** Este llamativo diseño enrejado con la pila doblada a mano, aporta una textura tridimensional a cualquier interior. **IT** Questo disegno grafico del traliccio e' tuftato con il pelo arricciato, ha un aspetto tridimensionale per il tuo arredamento.

Sarang Fuchsia

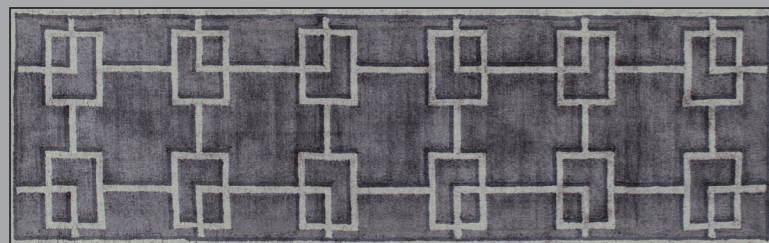
This statement runner is hand tufted in fine alternating bands of wool and viscose in blocked ribs of colour with a subtle sheen.

DE Dieser leicht glänzende Statement Teppich wurde von unserem atemberaubenden Velour Karo inspiriert und aus feinen Wolle und Viskose Fasern handgetuftet. **FR** Ce tapis tufté à la main est composé de fines rayures alternant laine et viscose. **ES** Esta llamativa alfombra está rematada a mano en finas bandas alternas de lana y viscosa, en colores alternos y de un brillo sutil. **IT** Questo tappeto è taftato a mano in sottili fili di lana e viscosa alternati a costine di colore, con una sottile lucentezza.

Padua Azure

Skilfully hand tufted in a superior pure wool for improved softness, and with the added practicality of wool being a naturally warm and resilient fibre, this quality runner is suitable for high-traffic areas in your home.

DE Handgetuftet aus reiner Wolle für einen besonders weichen Griff. Dieser Läufer eignet sich durch die sehr zweckmäßigen Eigenschaften der Wolle auch für stark frequentierte Bereiche in Ihrem Zuhause. **FR** Tuftée à la main avec habileté dans une laine pure de qualité supérieure. Douce et pratique, la laine est une fibre naturellement chaude et résistante, convenant aux zones de fort passage dans la maison. **ES** Tejida a mano en lana pura de calidad superior para mayor suavidad - con una fibra naturalmente cálida y resistente esta alfombra de pasillo de gran calidad es perfectamente adecuada para zonas de alto tráfico en el hogar. **IT** Taftato a mano con pura lana pregiata per una maggiore morbidezza, gode anche della praticità della lana, essendo questa una fibra naturalmente calda e resiliente, ed è adatto ad aree ad alto passaggio.



Rheinsberg Granite
Hand Tufted. Pile 100% Viscose, Backing 100% Cotton.
75x250cm 2'5x8'2" RUGDG0558



Sarang Fuchsia
Hand Tufted. Pile 50% Wool, 50% Viscose, Backing 100% Cotton.
75x250cm 2'5x8'2" RUGDG0625



Padua Azure
Hand Tufted. Pile 100% Wool, Backing 100% Cotton.
75x250cm 2'5x8'2" RUGDG0600

Padua Natural

Skilfully hand tufted in a superior pure wool for improved softness, and with the added practicality of wool being a naturally warm and resilient fibre, this runner is suitable for high-traffic areas in your home.

DE Hand getuftet aus reiner Wolle für einen besonders weichen Griff. Dieser Läufer eignet sich durch die sehr zweckmäßigen Eigenschaften der Wolle auch für stark frequentierte Bereiche in Ihrem Zuhause. **FR** Tuftée à la main avec habileté dans une laine pure de qualité supérieure. Douce et pratique, la laine est une fibre naturellement chaude et résistante, convenant aux zones de fort passage dans la maison. **ES** Habilmente tejida a mano en bucle en lana pura superior para mayor suavidad. La lana es una fibra naturalmente caliente y resistente, así que esta alfombra de lujo es también conveniente para las zonas de mayor tráfico en su hogar. **IT** Taftato a mano con pura lana pregiata per una maggiore morbidezza, gode anche della praticità della lana stessa, essendo questa una fibra naturalmente calda e resiliente, ed è adatto ad aree ad alto passaggio.

Tanchoi Berry & Graphite

Hand tufted in a 50% Tencel™ Lyocell 50% viscose blend for exceptional colour and softness, this contemporary runner is a statement piece with a luxurious finish.

DE Hand getuftet in einer 50% Tencel™ Lyocell 50% Viskose Mischung für eine außergewöhnliche Farbdarstellung und Weichheit, ist dieser zeitgenössische Läufer ein Statement Stück mit einem luxuriösen Finish. **FR** Tufté main dans un mélange 50% viscose 50% Tencel™ Lyocell pour une douceur exceptionnelle. **ES** Hecho a mano en una mezcla al 50% de Tencel™ Lyocell y 50% viscosa que le da un color y una suavidad excepcionales, esta alfombra de pasillo es una pieza con un acabado de lujo. **IT** Tuftato a mano, 50% viscosa e 50% in Tencel™ Lyocell, per un colore e una morbidezza eccezionale, questo tappeto moderno è un capo di tendenza con una finiture di lusso.



Padua Natural
Hand Tufted. Pile 100% Wool, Backing 100% Cotton.
75x250cm 2'5x8'2" RUGDG0601



Tanchoi Berry
Hand Tufted. Pile 50% Tencel™ Lyocell, 50% Viscose,
Backing 100% Cotton.
75x250cm 2'5x8'2" RUGDG0559



Tanchoi Graphite
Hand Tufted. Pile 50% Tencel™ Lyocell, 50% Viscose,
Backing 100% Cotton.
75x250cm 2'5x8'2" RUGDG0560



Fitzrovia Espresso

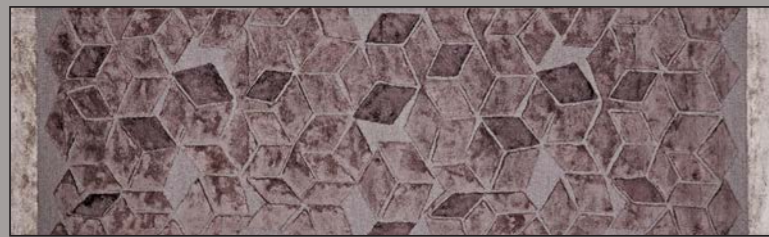
This elegant geometric runner is created with a hand tufted wool loop background and graphic raised cut pile motifs in viscose.

DE Ein elegantes, geometrisches Design aus handgetufteten Wollschlaufen und grafischen Schnittmotiven aus Viskose. **FR** Cet élégant tapis géométrique est créé avec un fond bouclé en laine tufté à la main et des motifs graphiques en poils surélevés en viscose. **ES** Esta elegante alfombra geométrica está creada con un fondo de bucle de lana tejido a mano y motivos gráficos de pila cortada en viscosa. **IT** Questo elegante tappeto geometrico è stato creato con uno sfondo in lana taftata a mano e motivi grafici in viscosa.

Sarang Chocolate

This statement runner is hand tufted in fine alternating bands of wool and viscose in blocked ribs of colour with a subtle sheen.

DE Dieser wunderschöne Statement Teppich wurde von unserem atemberaubenden Velour Karo inspiriert und aus feinen Wolle und Viskose Fasern handgetuftet. **FR** Ce tapis tufté à la main est composé de fines rayures alternant laine et viscose. **ES** Esta llamativa alfombra está rematada a mano en finas bandas alternas de lana y viscosa, en colores alternos y de un brillo sutil. **IT** Questo tappeto è taftato a mano in sottili fili di lana e viscosa alternati a costine di colore, con una sottile lucentezza.



Fitzrovia Espresso
Hand Tufted. Pile 50% Wool, 50% Viscose, Backing 100% Cotton.
75x250cm 2'5x8'2" RUGDG0628



Sarang Chocolate
Hand Tufted. Pile 50% Wool, 50% Viscose, Backing 100% Cotton.
75x250cm 2'5x8'2" RUGDG0626

indoor / outdoor rugs

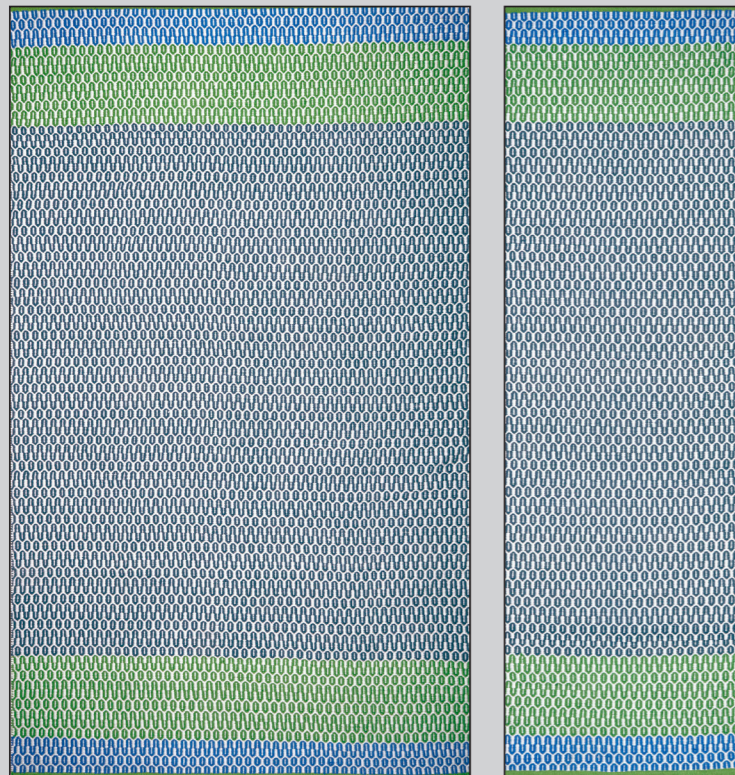
Come rain or shine, these innovative rugs can be used inside and out


Cortez Cobalt *

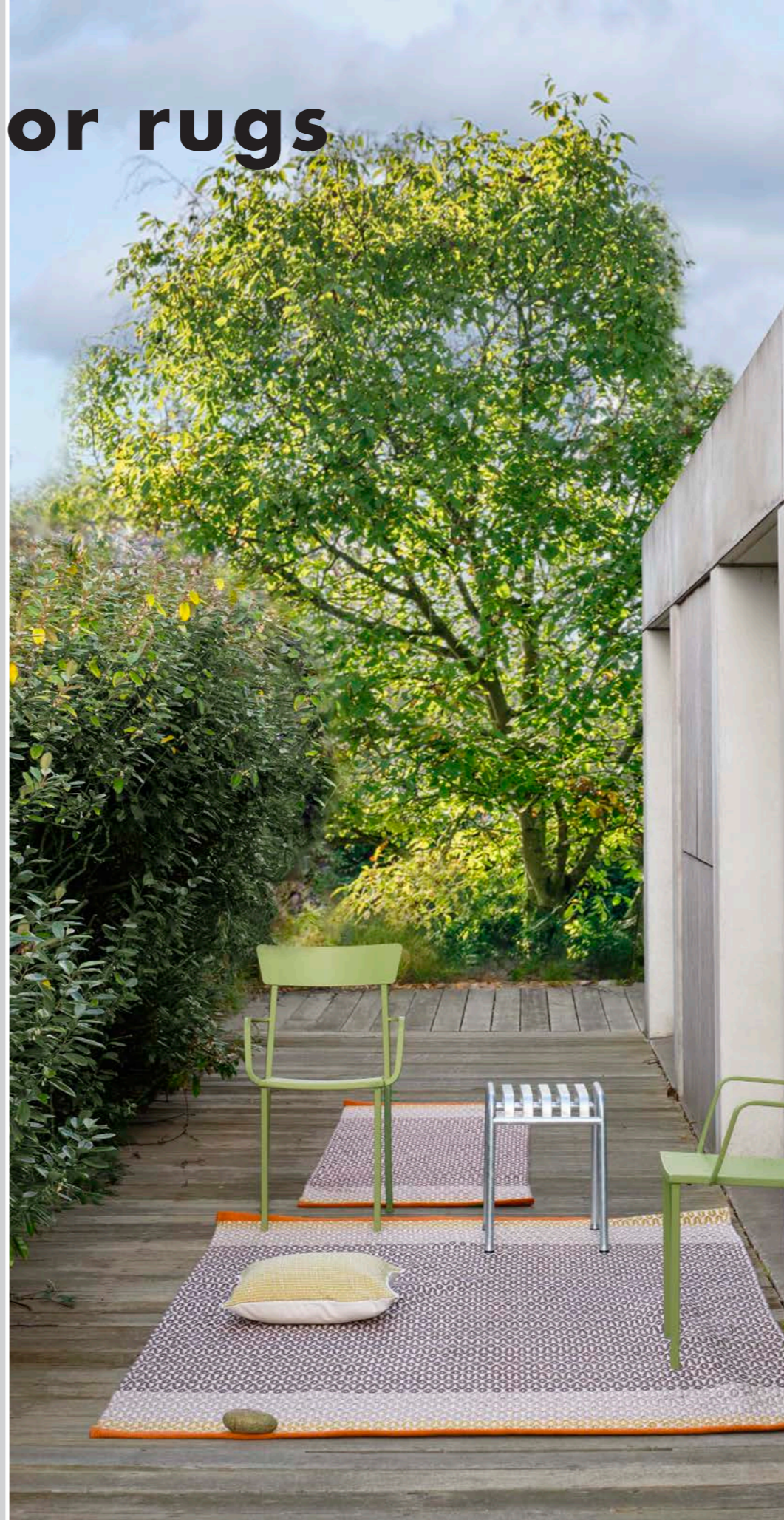
A stylish geometric woven rug in indigo and white with contrasting bands of cobalt and emerald, finished with an emerald hem.


DE Moderner Teppich mit geometrischem Muster in Indio und Weiß mit ineinander fließenden Streifen in Cobalt und Emerald. Emeraldgrüne Bordüre an beiden Enden. **FR** Un tapis tendance géométrique de ton indigo et blanc et de rayures cobalt et émeraude, avec une finition à surjet émeraude.

ES Una alfombra tejida con estampado geométrico en índigo y blanco, contrastado con bandas en cobalto y esmeralda, y rematada con un dobladillo esmeralda. **IT** Un elegante tappeto geometrico in indaco e bianco con fasce a contrasto cobalto e smeraldo, rifinito con un bordo smeraldo.



Hand Woven, Flat Weave. 100% PET Polyester. No Backing. † 
 Standard: 160x260cm 5'2x8'5" RUGDG0669
 Large: 200x300cm 6'6x9'8" RUGDG0670
 Extra Large: 250x350cm 8'2x11'5" RUGDG0671
 Runner: 75x250cm 2'5x8'2" RUGDG0675



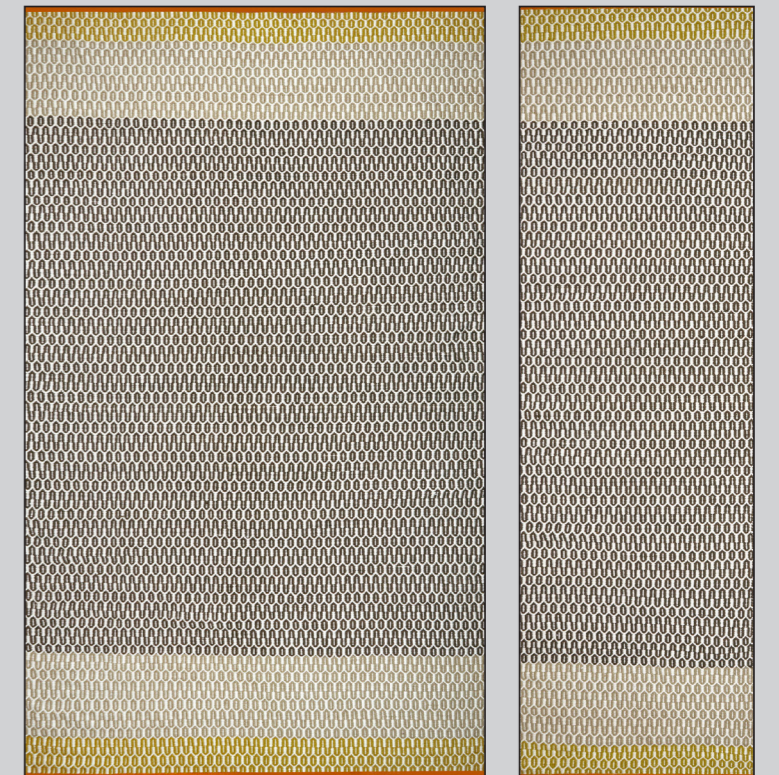
 This Specialist PET yarn can be recycled.
DE Dieses spezielle PET Garn kann recycelt werden. **FR** Ce fil en PET est recyclable. **ES** Estas fibras especiales PET pueden ser recicladas. **IT** Questo filato in PET puo' essere riciclato.


† These hand-woven flat weave rugs are constructed from a specialist polyester yarn made from up to 875 recycled plastic bottles.

Cortez Saffron *

A stylish geometric woven rug in chocolate and ecru with contrasting bands of neutral and ochre, finished with a saffron hem.

DE Moderner Teppich mit geometrischem Muster in Chocolate und Ecru mit ineinander fließenden Streifen in Natur und Ocker. Saffrangelbe Bordüre an beiden Enden. **FR** Un tapis élégant et géométrique de ton chocolat et écru avec des rayures neutres et ocres, avec une finition à surjet safran. **ES** Una elegante alfombra geométrica tejida en chocolate y crudo con bandas contrastantes de neutro y ocre, rematada con un dobladillo en azafrán. **IT** Un elegante tappeto geometrico in cioccolato e ecru con fasce a contrasto naturale e ocre, rifinito con un bordo zafferano.



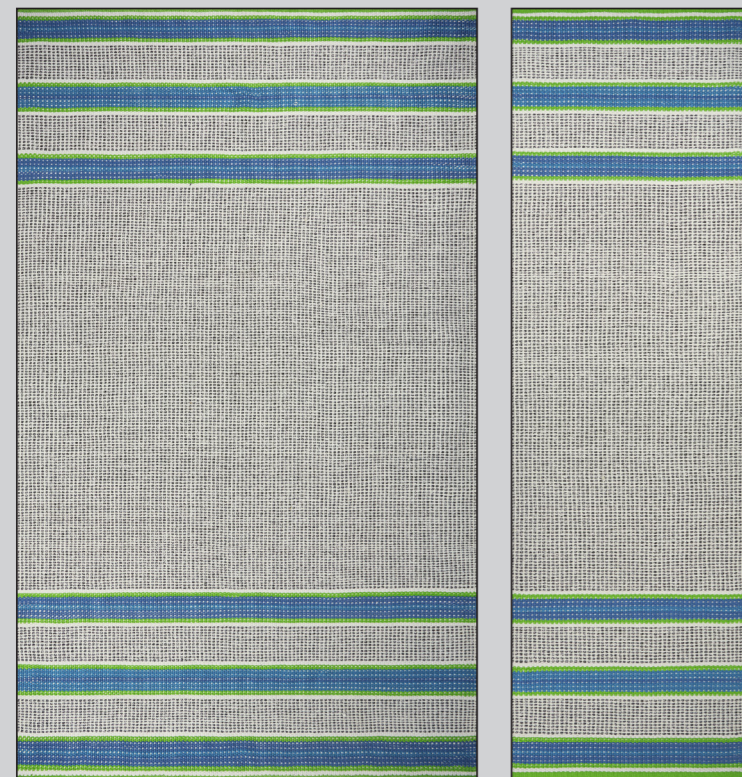
†  Hand Woven, Flat Weave. 100% PET Polyester. No Backing.
 Standard: 160x260cm 5'2x8'5" RUGDG0672
 Large: 200x300cm 6'6x9'8" RUGDG0673
 Extra Large: 250x350cm 8'2x11'5" RUGDG0674
 Runner: 75x250cm 2'5x8'2" RUGDG0676


* Bespoke sizing available to order. Please refer to page 76 | Sondermaße können bestellt werden. Weitere Angaben sehen Sie auf Seite 76 | Les tapis sur mesure sont réalisables sur devis. Veuillez vous référer à la page 76 | Para pedidos de medidas personalizadas, por favor consulte pagina 76 | Il su misura e' disponibile, si prega di far riferimento alla pagina 76

Pompano Cobalt *


Featuring a black and white textured body and finished at both ends with bold cobalt and emerald stripes and a coloured woven hem.

DE Ein Schwarz-weißer strukturierter Teppich mit kräftigen blauen und grünen Streifen sowie einem farbig gewebten Saum. **FR** Le tapis Pompano Cobalt présente une texture noire et blanche et se termine par des rayures de couleur cobalt et émeraude aux deux extrémités avec un ourlet tissé coloré. **ES** Las alfombras Pompano Cobalto despliegan un cuerpo texturado en blanco y negro y están rematadas en ambos extremos con atrevidas rayas cobalto y esmeralda y un dobladillo de tejido coloreado. **IT** Il tappeto Pompano Cobalto presenta una struttura nera e bianca ed è rifinito a entrambe le estremità con vivaci strisce color cobalto e smeraldo e un orlo colorato.



Hand Woven, Flat Weave. 100% PET Polyester. No Backing. 
 Standard: 160x260cm 5'2x8'5" RUGDG0574
 Large: 200x300cm 6'6x9'8" RUGDG0575
 Extra Large: 250x350cm 8'2x11'5" RUGDG0588
 Runner: 75x250cm 2'5x8'2" RUGDG0573



 This Specialist PET yarn can be recycled.


DE Dieses spezielle PET Garn kann recycelt werden. **FR** Ce fil en PET est recyclable. **ES** Estas fibras especiales PET pueden ser recicladas. **IT** Questo filato in PET puo' essere riciclato.

Pompano Natural *

featuring a black, natural and white textured body and finished at both ends with grey and nutmeg stripes and a moss coloured woven hem.

DE Ein Schwarz-weißer strukturierter Teppich mit grauen und braunen Streifen sowie einem farbig gewebten Saum. **FR** Le tapis Pompano Naturel présente une texture noire et blanche et se termine par des rayures de couleur grises et muscade aux deux extrémités avec un ourlet tissé coloré. **ES** Las alfombras Pompano Natural despliegan un cuerpo texturado en blanco y negro y natural y están rematadas en ambos extremos con rayas marrón y gris y un dobladillo de tejido coloreado en musgo. **IT** Il tappeto Pompano Natural presenta una struttura nera, naturale e bianca ed è rifinito a entrambe le estremità con vivaci strisce color grigio e nocciola e un orlo verde muschio.



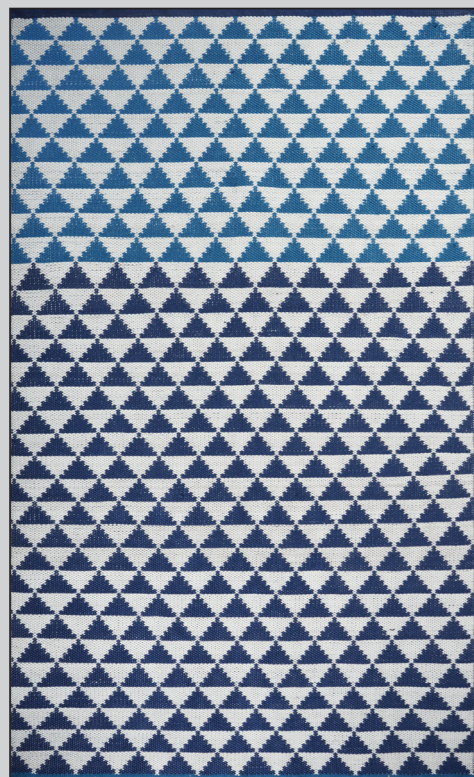
 Hand Woven, Flat Weave. 100% PET Polyester. No Backing.
 Standard: 160x260cm 5'2x8'5" RUGDG0577
 Large: 200x300cm 6'6x9'8" RUGDG0578
 Extra Large: 250x350cm 8'2x11'5" RUGDG0589
 Runner: 75x250cm 2'5x8'2" RUGDG0576


Biscayne Cobalt *

Biscayne Cobalt rug features a mainly cobalt blue and white geometric design, with a contrasting section in turquoise and white, finished with woven hems.


DE Der Teppich Biscayne Cobalt zeichnet sich durch sein vorwiegendes kobaltblau- und weißes geometrisches Design mit Kontrasten in Türkis und Weiß sowie den gewebten Säumen aus. **FR** Le tapis Biscayne Cobalt présente un dessin géométrique bleu cobalt et blanc, combiné avec une légère teinte turquoise et blanche et se terminant par des ourlets tissés. **ES** La alfombra Biscayne Cobalt presenta un diseño geométrico principalmente en azul cobalto y blanco, con un contraste en una combinación de blanco y turquesa y esta rematada con dobladillos tejidos.

IT Il tappeto Biscayne Cobalt presenta un disegno geometrico prevalentemente blu cobalto e bianco, con un contrasto in una combinazione turchese e bianca e poi rifinito con orli intrecciati.



Hand Woven, Flat Weave. 100% PET Polyester. No Backing. 
 Small: 90x150cm 2'11x4'11" RUGDG0585
 Standard: 160x260cm 5'2x8'5" RUGDG0579
 Large: 200x300cm 6'6x9'8" RUGDG0580
 Extra Large: 250x350cm 8'2x11'5" RUGDG0581



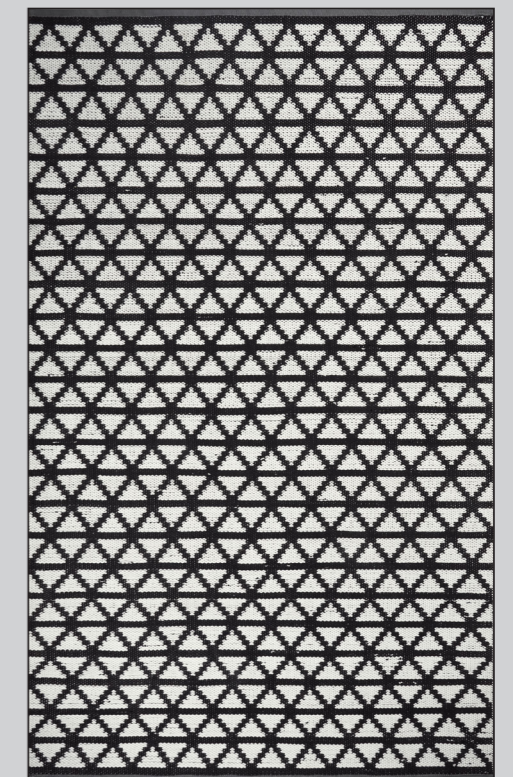
 This Specialist PET yarn can be recycled.


DE Dieses spezielle PET Garn kann recycelt werden. **FR** Ce fil en PET est recyclable. **ES** Estas fibras especiales PET pueden ser recicladas. **IT** Questo filato in PET puo' essere riciclato.

Delray Noir *

Delray Noir rug features a black and white geometric design and is finished at both ends with a grey woven hem.

DE Der Teppich Delray Noir hat ein geometrisches Design in Schwarz und Weiß und ist an beiden Enden mit einem grau gewebten Saum versehen. **FR** Le tapis Delray Noir au motif géométrique noir et blanc aux deux extrémités se termine par un ourlet tissé dans un ton gris. **ES** La alfombra Delray Noir cuenta con un diseño geométrico blanco y negro y está rematada en ambos extremos con un dobladillo de tejido gris. **IT** Il tappeto Delray Noir presenta un design geometrico bianco e nero ed è rifinito alle due estremità con un orlo grigio.



 Hand Woven, Flat Weave. 100% PET Polyester. No Backing.
 Small: 90x150cm 2'11x4'11" RUGDG0587
 Standard: 160x260cm 5'2x8'5" RUGDG0582
 Large: 200x300cm 6'6x9'8" RUGDG0583
 Extra Large: 250x350cm 8'2x11'5" RUGDG0584

Pietra Dura Multicolore *

Fabulous multi colour shades, with fine lines of silver metallic thread and tufted with a mix of wool and viscose yarns with varying pile heights, graphic carving and a unique cut away effect edge.

DE Ein fabelhafter Teppich in mehrfarbigen Farbnuancen mit feinen Linien aus silbernen Metallfäden. Getuftet aus einer Woll-Viskose Mischung, mit unterschiedlichen Florhöhen und grafischen Effekten.

FR S'inspire d'une marqueterie de marbre, ici disposée en chevrons. L'esprit graphique de ce tapis est mis en valeur par un liseré métallique. Son mélange tufté de laine et de viscose joue sur différentes hauteurs et sur une bordure découpée. **ES** Fabulosos tonos multicolores, con finas líneas de hilo plateado y anudada en una mezcla de viscosa y lana. Destacan en esta impactante alfombra de lujo la pila de altura variada, el esculpido muy gráfico y un singular borde de efecto recortado. **IT** Con favolose sfumature multicolore e sottili linee di filo metallico argentato, taftato con un mix di filati di lana e viscosa.



Hand Tufted Pile, 50% Wool, 50% Viscose. Backing 100% Cotton
 Standard: 160x260cm 5'2x8'5" RUGCL0344
 Large: 200x300cm 6'6x9'8" RUGCL0345
 Extra Large: 250x350cm 8'2x11'5" RUGCL0346



Christian Lacroix RUGS COLLECTION

Prête-moi Ta Plume!

A dramatic round decorative rug from Christian Lacroix Maison – digitally printed feathers in monochromatic shades are set in a swirling pattern, following the round form of the rug.

DE Durch diesen spektakulären und sehr dekorativen Teppich von Christian Lacroix Maison wird eine besondere Stimmung im Interiorbereich geschaffen - die Federn im Digitaldruck und monochromatische Schattierungen lassen die Federn über den runden Teppich schweben. **FR** Le tourbillon de plumes de ce tapis saisissant de la Maison Christian Lacroix apportera de la vie à votre intérieur. Imprimé numériquement, ses plumes virevoltantes richement détaillées subliment à merveille la forme ronde de ce tapis. **ES** Cree un aire de drama en su interior con esta espectacular alfombra redonda de Christian Lacroix Maison: el estampado de plumas en tonos monocromáticos se dispone en un patrón giratorio, siguiendo la forma redonda de la alfombra. **IT** Dai un tocco drammatico al tuo schema interno con questo tappeto decorativo rotondo della Maison Christian Lacroix: piume stampate digitalmente in tonalità monocromatiche sono disposte in un motivo vorticoso, seguendo la forma rotonda del tappeto.



Hand Tufted Pile, 100% Polyimide Backing 100% Felt
 250cm Diameter 8'2" RUGCL0351

* Bespoke sizing available to order. Please refer to page 76 | Sondermaße können bestellt werden. Weitere Angaben sehen Sie auf Seite 76 | Les tapis sur mesure sont réalisables sur devis. Veuillez vous référer à la page 76 | Para pedidos de medidas personalizadas, por favor consulte pagina 76 | Il su misura e' disponibile, si prega di far riferimento alla pagina 76

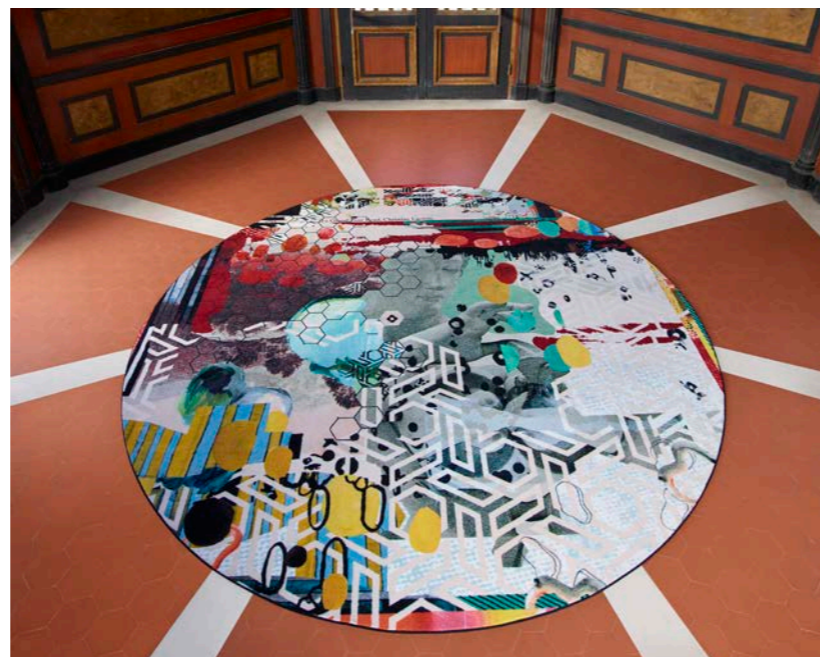
Geisha Prisme

Bold areas of bright colour and ikat motifs are tufted with a mix of wool and viscose yarns in this fabulous graphic rug with varying pile heights, intricate carving and a unique pattern.

DE Der grafische Teppich verfügt über kräftige Farbflächen und Ikat-Motive, die in das Woll- und Viskosegarn getuftet wurden. Ein atemberaubenden Teppich mit unterschiedlichen Florhöhen, einem einzigartigen Design und einem aufwändigem Muster. **FR** Tufté de laine et de viscose avec différents effets de hauteurs, ce tapis très graphique offre un style unique. **ES** Los colores brillantes y los motivos ikat se combinan con una mezcla de hilos de lana y viscosa en esta fabulosa alfombra con diferentes grosores y un estampado único. **IT** Di colore brillante e motivi ikat vengono tuftati con un mix di filati di lana e viscosa in questo favoloso tappeto grafico. Disponibile in diversi spessori che rendono questi tappeti unici e lussuosi.



Hand Tufted Pile, 50% Wool, 50% Viscose.
Backing 100% Cotton
Standard: 160x260cm 5'2x8'5" RUGCL0335
Large: 200x300cm 6'6x9'8" RUGCL0336
Extra Large: 250x350cm 8'2x11'5" RUGCL0337



Christian Lacroix RUGS COLLECTION

Grand Tour Tomette

This striking large circular rug is printed onto a new quality offering durability with a dense low pile finish which enhances the detail of the unique digital print process.

DE Ein auffallender, großer Kreis ist digital auf eine neue Qualität gedruckt, die Strapazierfähigkeit mit einem dichten Flor-Finish kombiniert. **FR** Un nouveau tapis rond imprimé en numérique sur une nouvelle qualité apportant de la résistance grâce à une finition de poils denses. **ES** Esta llamativa alfombra circular esta digitalmente impresa en una nueva calidad ofreciendo durabilidad y densidad. **IT** Questo meraviglioso tappeto circolare di grandi dimensioni è stampato in digitale su una nuova qualità che offre durata con una finitura di tessuto densa.



Digitally Printed Pile 100% Polyamide. Backing 100% Felt.
250cm Diameter 8'2" RUGCL0334

Christian Lacroix RUGS COLLECTION

Bosquet Carbone *

Hand tufted in 100% wool in monochrome black and white for a dramatic impact in any interior space.

DE Handgetuftet aus 100% Wolle in Schwarz-weiß für einen dramatischen Look. **FR** Un travail de coupe délicat et minutieux met en relief les feuilles d'un noir profond et crée ce somptueux tapis bicolore. **ES** Tejida a mano en lana 100% en un monocromo blanco y negro para un impacto dramático en cualquier espacio interior. **IT** Taftato a mano in lana 100% in bianco e nero monocromatici, per un impatto drammatico. un unico bordo con effetto tagliato completano questo splendido tappeto di lusso.

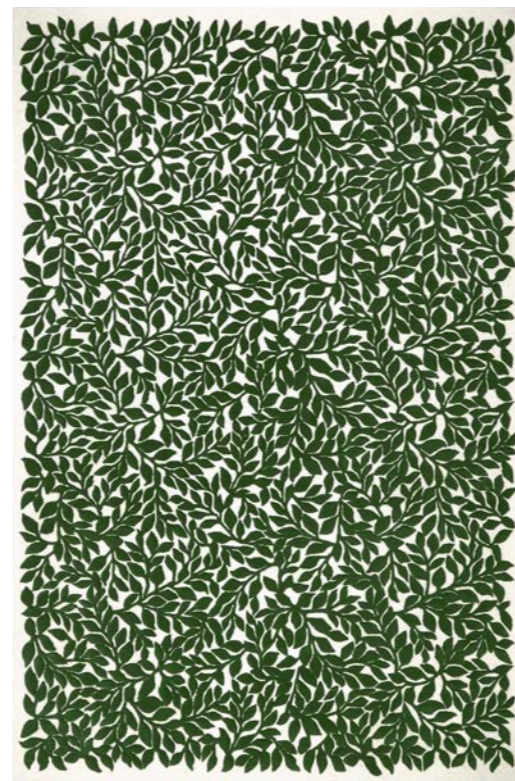


Hand Tufted Pile, 100% Wool. Backing 100% Cotton
250cm Diameter 8'2" RUGCL0347

Bosquet Roseau *

A 100% wool composition, in both tufted and loop pile for all interior spaces.

DE Getuftete Schlingenware aus 100% Wolle, für jedes Interior geeignet. **FR** Un motif de feuillage en laine 100% tuftée et bouclée créera un effet spectaculaire dans votre intérieur. **ES** Una composición 100% de lana, perfecta para todos los espacios interiores. **IT** Una composizione 100% lana, questi tappeti sono sia arricciati che tuftati e si adattano a tutti i tipi di spazi interni.



Hand Tufted Pile, 100% Wool. Backing 100% Cotton
Standard: 160x260cm 5'2x8'5" RUGCL0338
Large: 200x300cm 6'6x9'8" RUGCL0339
Extra Large: 250x350cm 8'2x11'5" RUGCL0340





Tempera Multicolore Garance *

The rich suffused colours of a painted horizon at sunset form the inspiration for this boldly striped and luxuriously textured rug.

DE Als Inspiration für diesen auffallend gestreiften und luxuriös texturierten Teppich dienten die kräftigen und leuchtenden Farben des Horizonts bei Sonnenuntergang. **FR** Ce luxueux tapis est composé de rayures texturées aux couleurs chatoyantes évoquant celles d'un coucher de soleil. **ES** Los ricos y envolventes colores de un horizonte pintado al atardecer conforman la inspiración de esta lujosa y texturizada alfombra de atrevidas rayas. **IT** Gli intensi colori che dipingono l'orizzonte all'ora del tramonto sono l'ispirazione per questo tappeto audacemente rigato.



Christian Lacroix RUGS COLLECTION

Mascarade Graphite *

Varying pile heights and a unique cut away effect border completes this stunning sophisticated colourway of our best selling Mascarade Arlequin rug.

DE Wechselnder Faserflor und der einzigartige Schnitteffekt schließen diese, atemberaubende, anspruchsvolle Farbmischung unseres best verkauften Mascarade Arlequin Teppichs ab. **FR** Son mélange tufté de laine et de viscose joue sur différentes hauteurs et sur une bordure découpée pour un effet spectaculaire. **ES** La variedad de alturas del pelo y el exclusivo borde de efecto recortado completan este sofisticado color de nuestra alfombra bestseller Mascarade Arlequin. **IT** Le diverse altezze e l'unicità dei bordi che seguono il motivo geometrico completano questa sorprendente e sofisticata colorazione del nostro tappeto Mascarade Arlequin piu' venduto.



Hand Tufted Pile 22% Wool 78% Viscose.
Backing 100% Cotton.
Standard: 160x260cm 5'2x8'5" DHRCL003/01
Large: 200x300cm 6'6x9'8" DHRCL004/01



Hand Tufted Pile, 50% Wool, 50% Viscose.
Backing 100% Cotton
Standard: 160x260cm 5'2x8'5" RUGCL0341
Large: 200x300cm 6'6x9'8" RUGCL0342
Extra Large: 250x350cm 8'2x11'5" RUGCL0343

caring for your rug

General Care and Cleaning

A rug is often a focal point in a room, and proper care and maintenance will increase its longevity. To best care for your rug, we recommend that you lightly vacuum it on a regular basis using the nozzle attachment. Please take care to avoid using brush attachments since these can harm the rug fibres. Remember to always vacuum in the direction of the pile.

If a spillage occurs, blot immediately with a clean dry white cloth, making sure not to rub the spillage into the pile. Do not use harsh detergent. It is important not to walk or place items on the rug until it is completely dry to prevent lasting damage. To prevent rugs from slipping we recommend that you use a rug hold underlay.

Extra Protection for your Rug

See on page 40.

We always recommend treating your rug with our bespoke extra rug protection and cleaning by a specialist rug cleaner. Once your rug has been treated, please continue to vacuum the rug regularly as recommended. If a spillage does occur, please deal with it straight away by gently soaking up the spillage using a clean white cloth or a paper towel. For more information or to add this to your rug order please contact our Customer Service team.

Rug Fading

Please note that over time rug colours may fade, particularly under the influence of exposure to a strong natural light source/ UV radiation. Rug fading is dependent on the amount of light exposure and the usage of the carpet.

Loose Fibres

Due to the nature of our handmade rugs, you may experience loose fibres which can be easily removed by gentle vacuuming with the nozzle attachment. Some continued shedding is a normal characteristic that diminishes after initial use. Loose threads should not be pulled but cut with sharp scissors at pile height. Please note that pile shedding does not affect the life of a rug.

Odour

You may experience an initial odour from your rug. This is normal for new product and once aired it will reduce significantly over time.

Pressure Marks and Pile Reversal

We recommend that you turn your rug regularly to ensure even wear. Any movement in the pile or pressure marking is normal and should be expected, especially in high traffic areas. Furniture feet will create indentations on any rug pile. To help reduce marking, regularly rotate furniture and any other heavy objects when possible. To help recover the pile, lift the pile using a fine comb. We recommend using furniture pads to help reduce pressure marks.

Specific Rug Care

The process by which a rug is cleaned is entirely dependent on the composition of the rug, so it is important that the cleaning guidelines are followed. In all instances we recommend that you use a professional rug cleaner, however should a spillage or stain occur, the below information will reduce the chance of a lasting stain.

Viscose / Rayon / Tencel™ Lyocell / Polyester Rugs

Due to the nature of viscose and rayon yarns, you may notice lasting distortion of the pile after liquid spillages. These fibres are plant based, and despite achieving an incredible shine, are very delicate. Tencel™ Lyocell and Polyester rugs are known for superior quality and greater resistance to water marking, however there are still times when a quick response is needed to save your rug from a spillage and you need to clean the carpet yourself.

Using a clean white cloth or paper towel absorb the spill, gently blotting the area starting from the edge of the spot and working your way to the centre. Be careful not to rub. Once the liquid has been blotted, use a clean cloth lightly dampened by water to dab the stain as much as possible. If possible, use a fine comb to raise the pile in direction with the remainder of the rug pile. Try to dry the pile with a low-heat hairdryer whilst continuing to comb as quickly as possible. It is important not to walk or place items on the rug until it is completely dry as this can lead to permanent marking. Finally, gently vacuum using the nozzle attachment.

Wool Rugs

Wool fibres have their own natural thin, protective layer. This allows wool to repel dirt which gives you the opportunity to act if a spillage occurs on your rug. Clean the spot lightly with a damp cloth or an absorbing paper towel. Be careful not to rub. Diluted mild detergent may help in removing stubborn stains, however we always recommend using a professional rug cleaner.

Digitally Printed and Screen Printed Rugs

Digital printing and screen printing is a process which achieves the highest quality print detail. To deal with spillages, soak up as much of the liquid or substance as possible working from the edge to the centre of the spot. Clean the area lightly with a clean damp cloth or white absorbent paper dabbing only, without rubbing or scrubbing and leave to dry. Please note that failure to act may result in colour fading.

Indoor / Outdoor Rugs

Made from a specialist PET polyester yarn, these zero pile rugs are easy to clean, lightweight and reversible. Ideal for any floor that might be susceptible to high traffic or getting wet, as well as being great for outdoor use. As with all our outdoor furnishings, please note that these rugs should not be left outside in the elements or in direct sunlight for long periods of time, and care should be taken to dry out the rug should it get soaking wet. Please ensure that both the rug and the area where it will be placed are dry before placing the rug. To ensure safety and to prevent slipping, we recommend the use of a rug hold regardless of the flooring on which the rug is placed. Regular gentle vacuuming is recommended using the nozzle attachment, and the occasional gentle shake will keep these rugs looking their best. To remove dirt or spillages, spot clean by mixing a solution of water and mild soap. With a clean white cloth, gently blot from the outside of the spill to the interior to prevent spreading. Alternatively, rinse with an outdoor hose, and hang until thoroughly dry. Do not machine wash or machine dry, and do not use bleach. This specialist ♻️PET polyester yarn can be recycled where facilities allow.

Please note that the scale of the rug artwork may vary between sizes and may differ slightly from the image shown in the brochure. For more information about rug care please contact Customer Services.

DESIGNERS GUILD



Alphonse Moss
See page 34 ▶



Alphonse Ochre
See page 20 ▶



Barchessa Slate
See page 32 ▶



Capisoli Granite
See page 44 ▶



Capisoli Teal
See page 14 ▶



Caretto Linen
See page 40 ▶



Dahlia Noir Slate
See page 22 ▶



Dorsoduro Celadon
See page 8 ▶



Dorsoduro Fresco
See page 36 ▶



Eberson Aqua
See page 14 ▶



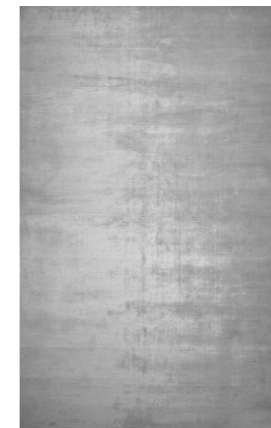
Eberson Cobalt
See page 10 ▶



Eberson Mink
See page 42 ▶



Eberson Moss
See page 26 ▶



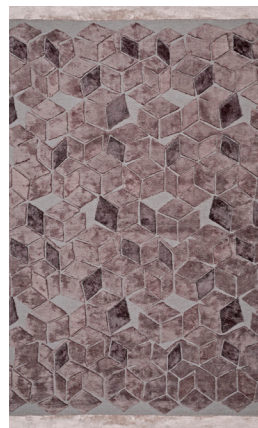
Eberson Platinum
See page 4 ▶



Eberson Slate
See page 24 ▶



Eberson Tuberosa
See page 44 ▶



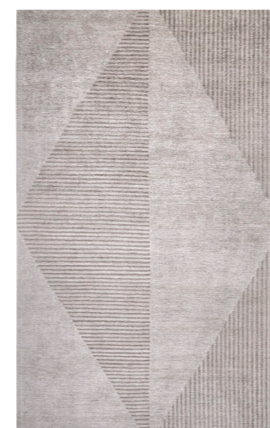
Fitzrovia Espresso
See page 30 ▶



Grandiflora Rose Epice
See page 18 ▶



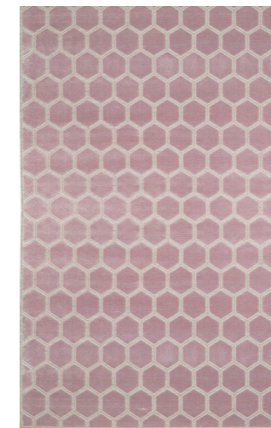
Impasto Celadon
See page 48 ▶



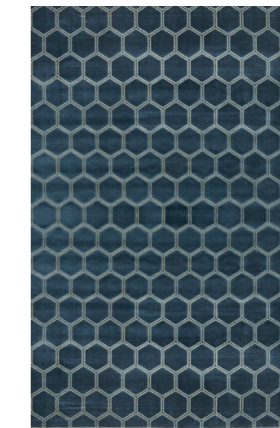
Kappazuri Zinc
See page 48 ▶



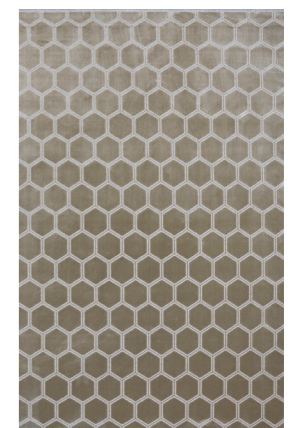
Lucian Acacia
See page 16 ▶



Manipur Amethyst
See page 40 ▶



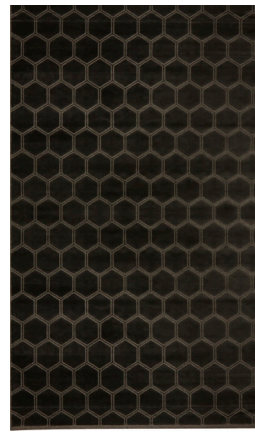
Manipur Delft
See page 4 ▶



Manipur Dove
See page 28 ▶

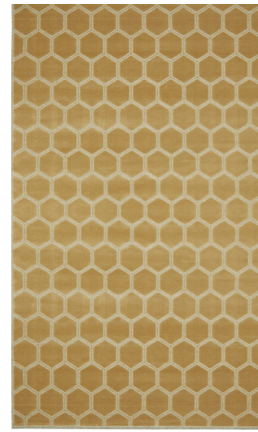
all our rugs at a glance

DESIGNERS GUILD



Manipur Espresso

See page 38 ▶



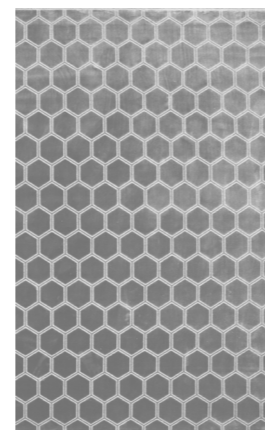
Manipur Hemp

See page 24 ▶



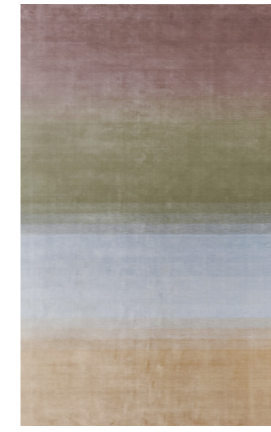
Manipur Natural

See page 34 ▶



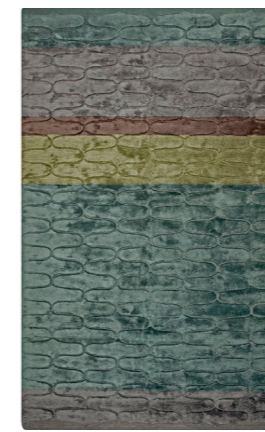
Manipur Silver

See page 42 ▶



Montmartre Zinc

See page 32 ▶



Ogee Ocean

See page 12 ▶



Padua Azure

See page 8 ▶



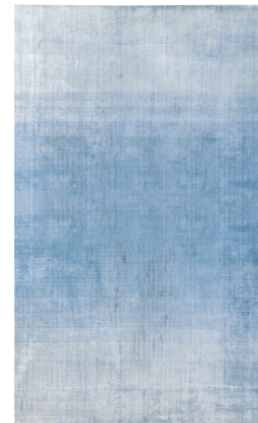
Padua Natural

See page 36 ▶



Peonia Grande Zinc

See page 46 ▶



Phipps Sky

See page 6 ▶



Saraille Dusk

See page 10 ▶



Saraille Linen

See page 28 ▶



Saraille Ochre

See page 20 ▶



Savoie Ocean

See page 16 ▶



Tanchoi Berry

See page 26 ▶



Rheinsberg Granite

See page 6 ▶



Roxburgh Linen

See page 38 ▶



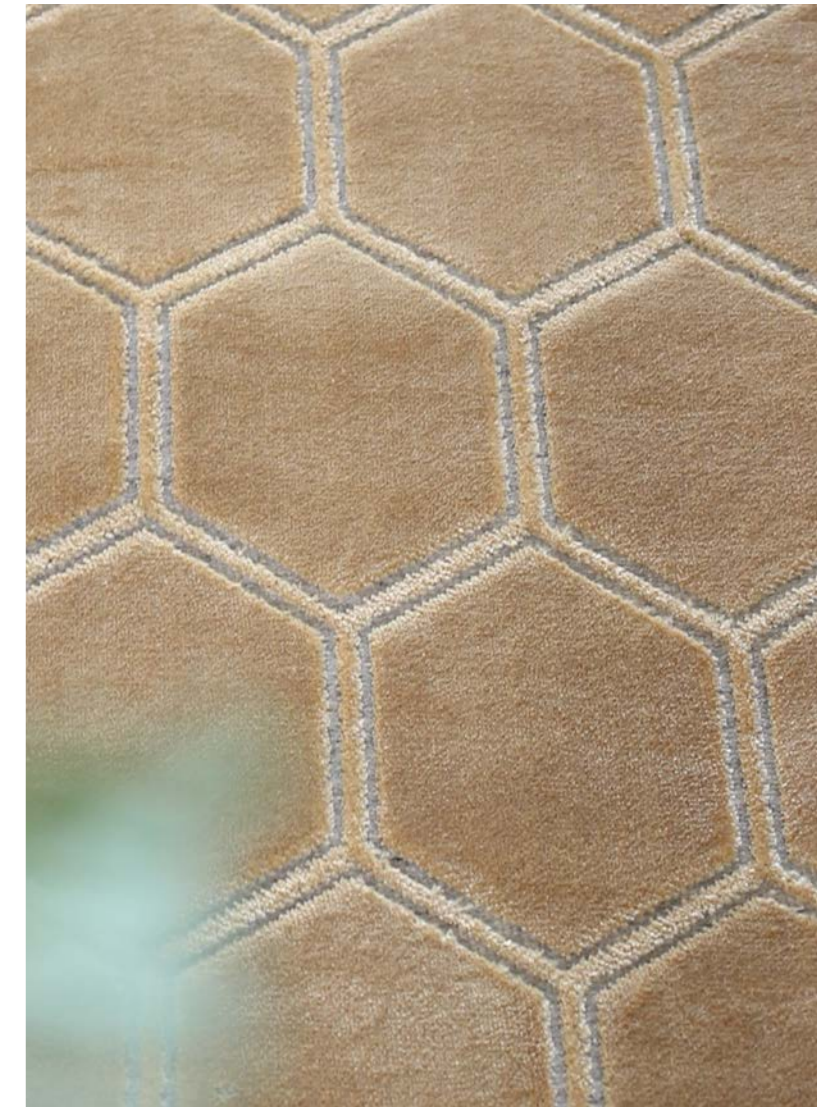
Sarang Chocolate

See page 30 ▶



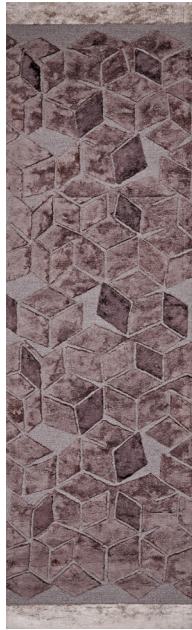
Sarang Fuchsia

See page 12 ▶



all our rugs at a glance

runners



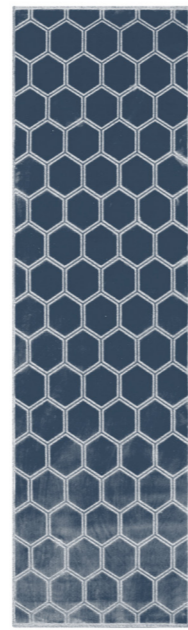
Fitzrovia Espresso
See page 60 ▶



Lucian Acacia
See page 54 ▶



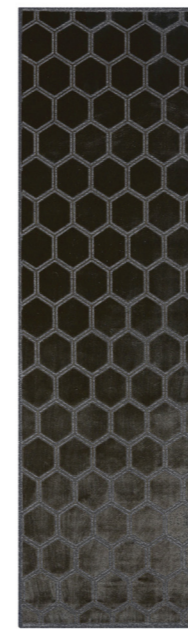
Manipur Amethyst
See page 52 ▶



Manipur Delft
See page 52 ▶



Manipur Dove
See page 52 ▶



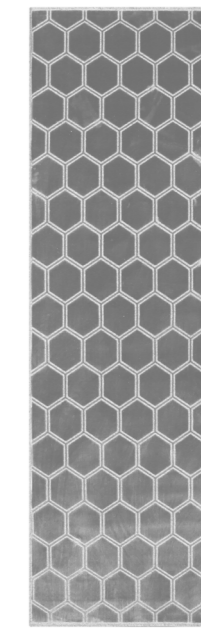
Manipur Espresso
See page 52 ▶



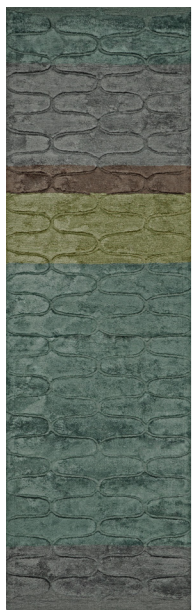
Manipur Hemp
See page 52 ▶



Manipur Natural
See page 52 ▶



Manipur Silver
See page 52 ▶



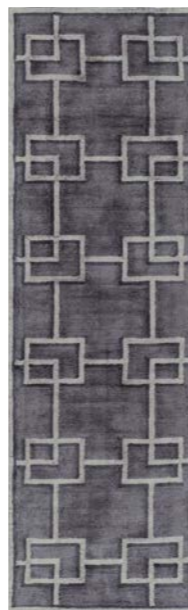
Ogee Ocean
See page 54 ▶



Padua Azure
See page 56 ▶



Padua Natural
See page 58 ▶



Rheinsberg Granite
See page 56 ▶



Rheinsberg Sage
See page 54 ▶



Sarang Chocolate
See page 60 ▶



Sarang Fuchsia
See page 56 ▶



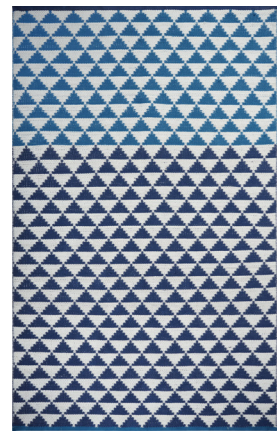
Tanchoi Berry
See page 58 ▶



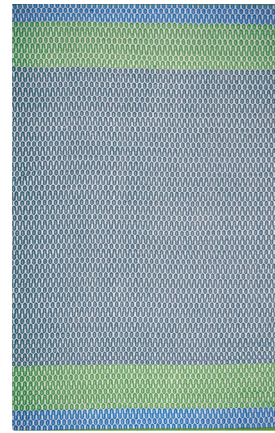
Tanchoi Graphite
See page 58 ▶

all our rugs at a glance

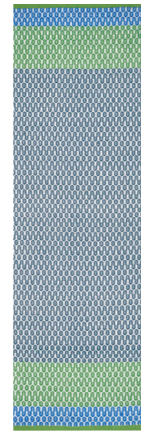
indoor/outdoor rugs & runners



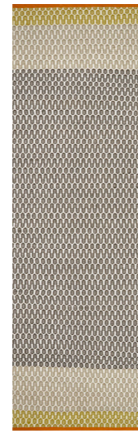
Biscayne Cobalt
See page 66 ▶



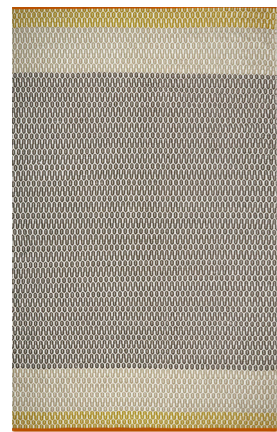
Cortez Cobalt
See page 62 ▶



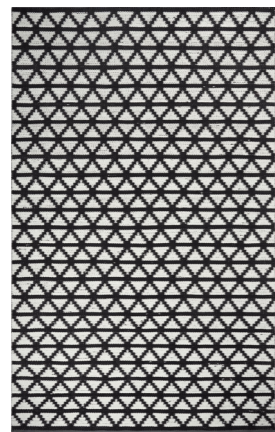
Cortez Cobalt
See page 62 ▶



Cortez Saffron
See page 63 ▶



Cortez Saffron
See page 63 ▶



Delray Noir
See page 67 ▶



Pompano Cobalt
See page 64 ▶



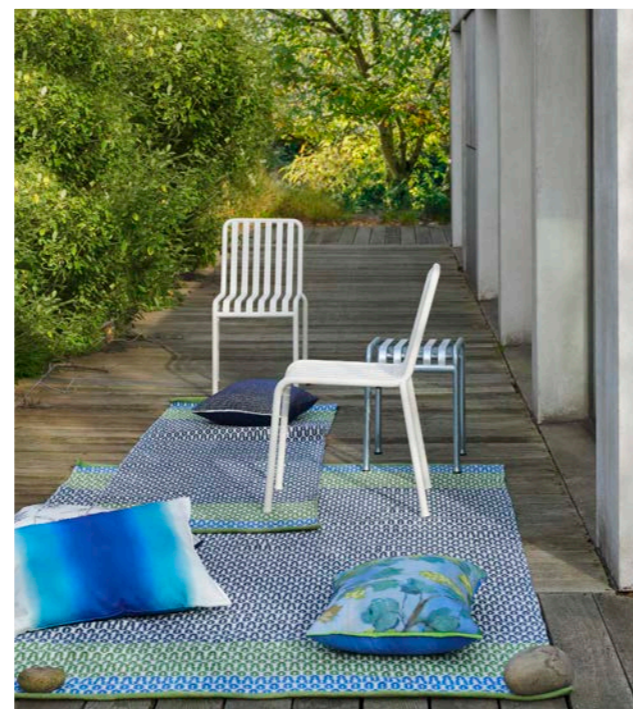
Pompano Natural
See page 65 ▶



Pompano Cobalt
See page 64 ▶



Pompano Natural
See page 65 ▶



Christian Lacroix



Bosquet Carbone
See page 72 ▶



Bosquet Roseau
See page 73 ▶



Geisha Prisme
See page 70 ▶



Grand Tour Tomette
See page 71 ▶



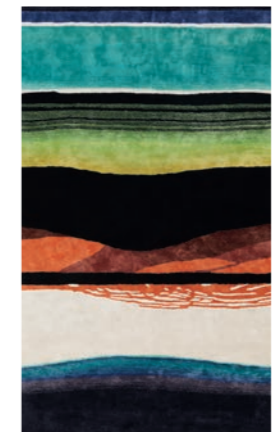
Mascarade Graphite
See page 75 ▶



Pietra Dura Multicolore
See page 68 ▶



Prete-moi Ta Plume!
See page 69 ▶



Tempera Multicolore Garance
See page 75 ▶



all our rugs at a glance